



## 3 Joseph Fletcher Drive, Wingerworth, Chesterfield, S42 6TZ

Offers In The Region Of £430,000

- 4 Double bedrooms
- Utility room
- Easy access to Lodge Pond
- Fantastic family home
- Master bedroom with ensuite
- Integral garage
- Lovely views
- Modern kitchen diner
- Extended driveway with space to house 3 vehicles
- Great location of Wingerworth



### 3 Joseph Fletcher Drive

CREATED ON  
2025-08-22

LOCATION  
3 Joseph Fletcher Drive  
S42 6TZ Chesterfield  
England  
GB

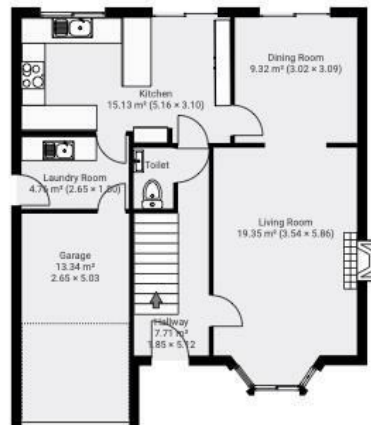
DETAILS  
Total area: 135.93 m<sup>2</sup>  
Living area: 117.42 m<sup>2</sup>  
Floors: 2  
Rooms: 20

Square Box Media  
info@squareboxmedia.com  
www.squareboxmedia.com

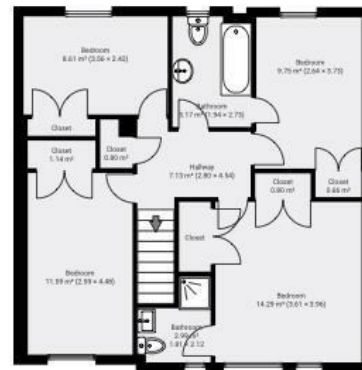
THIS FLOORPLAN IS PROVIDED WITHOUT  
WARRANTY OF ANY KIND. SENSORIA  
DISCLAIMS ANY WARRANTY INCLUDING,  
WITHOUT LIMITATION, SATISFACTORY QUALITY  
OR ACCURACY OF DIMENSIONS.

0 1 2 3m  
1:99

▼ **Ground Floor** TOTAL AREA: 71.03 m<sup>2</sup> · LIVING AREA: 57.69 m<sup>2</sup> · ROOMS: 7



▼ **1st Floor** TOTAL AREA: 64.90 m<sup>2</sup> · LIVING AREA: 59.72 m<sup>2</sup> · ROOMS: 13



## Directions

## Viewings

Viewings by arrangement only. Call 01246 276 276 to make an appointment.

## Council Tax Band

C

## EPC Rating:

C

Energy Efficiency Rating		
	Current	Potential
Very energy efficient - lower running costs		
(92-plus) A		
(81-91) B		
(69-80) C	72	76
(55-68) D		
(39-54) E		
(21-38) F		
(1-20) G		
Not energy efficient - higher running costs		
England & Wales	EU Directive 2002/91/EC	