



Totterdown Street, SW17

£475,000

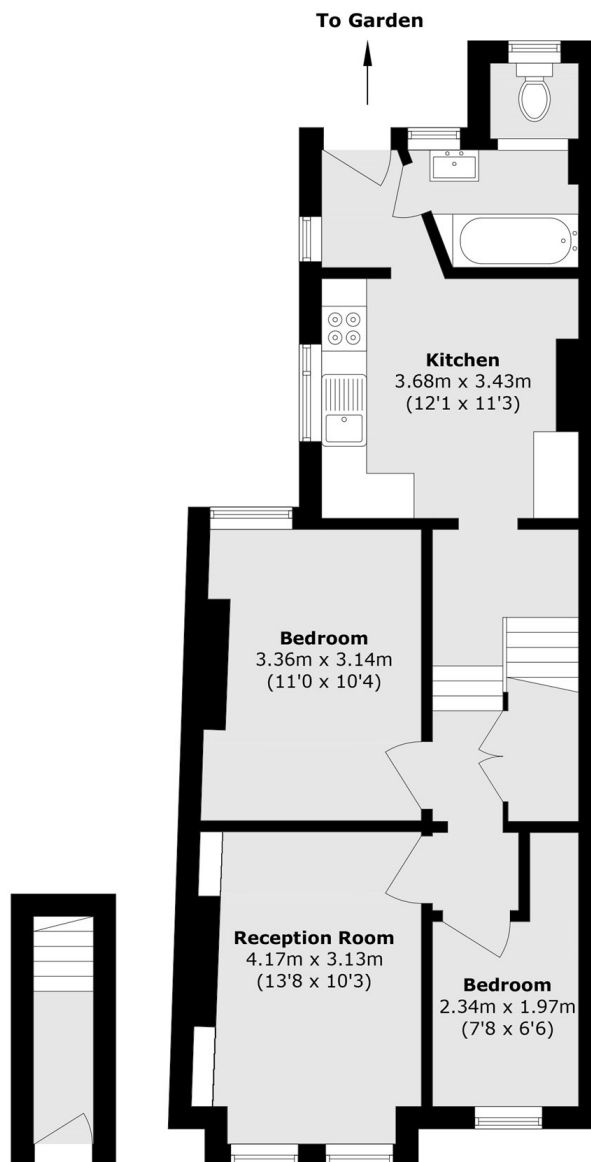
A larger than average upper maisonette set over the first floor of this handsome Victorian building extending to just shy of 700 sqft. Accommodation comprises a generous front reception room, two bedrooms, a superb eat-in stylish kitchen with direct access onto a private garden, a three piece family bathroom and huge scope for further extension (STPP).

Totterdown Street is positioned just off the vibrant High Street of Tooting, with its wide array of bars and restaurants. Tooting Broadway tube station and Tooting overground are only a short distance away with quick access into Central London.

Features

- Two Bedrooms
- Family Bathroom
- Share Of The Freehold
- Own Front Door
- Potential to Extend (STPP)
- Private Garden

Totterdown Street, London, SW17



Ground Floor

First Floor

Total area (approx.): 61.2 sq. m (658.7 sq. ft)

Dexters

Tooting
48 Tooting High Street
London
SW17 0RG
Sales
020 8545 8582

Energy Rating: C. We aim to make our particulars both accurate and reliable. However they are not guaranteed; nor do they form part of an offer or contract. If you require clarification on any points then please contact us, especially if you're traveling some distance to view. Please note that appliances and heating systems have not been tested and therefore no warranties can be given as to their good working order.

 **RICS** | Regulated
Estate Agent
and Letting Agent

dexters.co.uk