

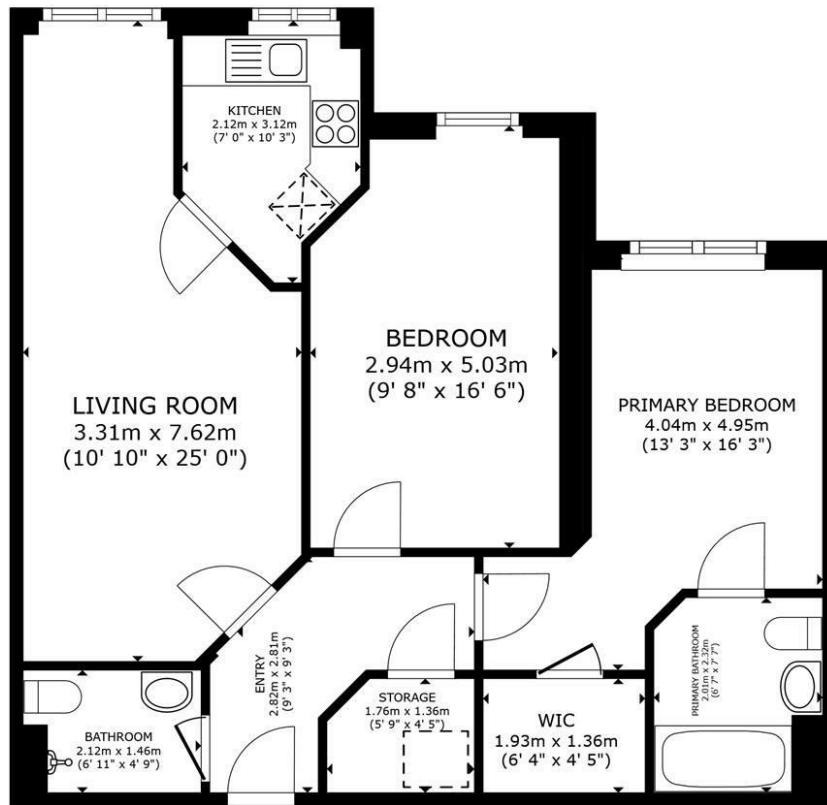


28 CLARENCE COURT, BRIGHTON ROAD HORSHAM

£310,000
LEASEHOLD

- **NO ONWARD CHAIN**
- MODERN FITTED KITCHEN
- FURTHER WET ROOM STYLE SHOWER ROOM
- ON-SITE MANAGER DURING THE DAY
- RESPONSE PULL CORDS
- TWO DOUBLE BEDROOM RETIREMENT APARTMENT
- MASTER BEDROOM WITH EN-SUITE BATHROOM AND WALK IN WARDROBE
- COMMUNAL LAUNDRY ROOM WITH AMPLE WASHING MACHINES AND DRYERS
- COMMUNAL GARDENS





FLOOR PLAN

GROSS INTERNAL AREA
FLOOR PLAN 76.1 m² (819 sq.ft.)
TOTAL : 76.1 m² (819 sq.ft.)

SIZES AND DIMENSIONS ARE APPROXIMATE, ACTUAL MAY VARY.



Energy Efficiency Rating		
	Current	Potential
Very energy efficient - lower running costs		
(92+)		
A		
(81-91)		
B		
(69-80)		
C		
(55-68)		
D		
(39-54)		
E		
(21-38)		
F		
(1-20)		
G		
Not energy efficient - higher running costs		
England & Wales	EU Directive 2002/91/EC	

Agents Note: Whilst every care has been taken to prepare these particulars, they are for guidance purposes only. All measurements are approximate and are for general guidance purposes only and whilst every care has been taken to ensure their accuracy, they should not be relied upon and potential buyers/tenants are advised to recheck the measurements

Eltons Estate Agents Horsham 01403 299 771
13 - 15 Queen Street
Horsham
West Sussex
RH13 5AA
sales@eltons.co.uk
eltons.co.uk

ELTONS
Estate Agents