



## Cranley Gardens, SW7

£850,000

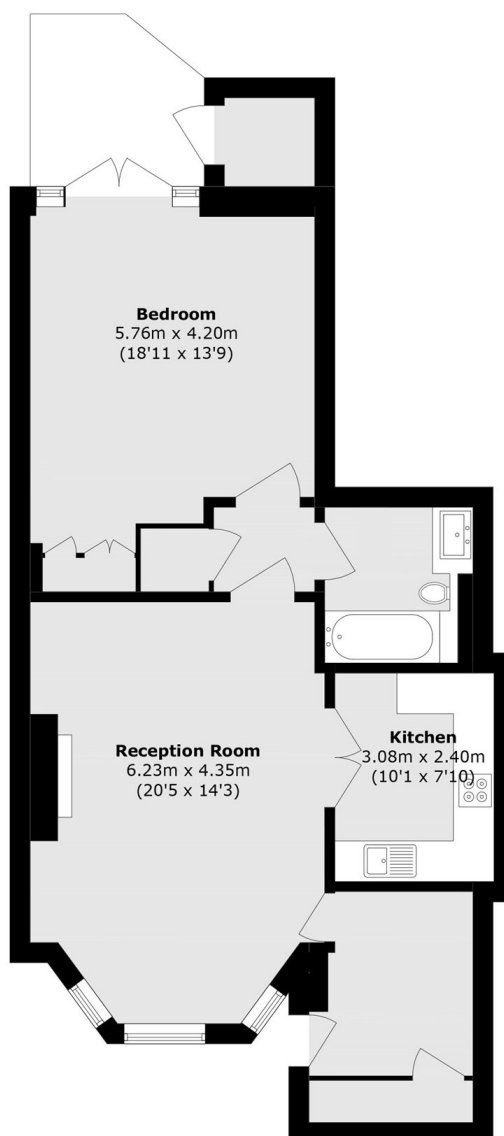
Positioned on the highly sought-after Cranley Gardens in the heart of South Kensington, this beautifully presented home is set within an elegant stucco-fronted period building and benefits from access to the renowned communal gardens of Onslow Gardens directly opposite. The generous double bedroom features a well-appointed en-suite bathroom and charming French windows, opening onto a peaceful private patio, a rare and desirable feature for the area.

Moments away from South Kensington station and Hyde Park, this property offers a close proximity to its many shops, restaurants and cafés.

### Features

- Heart Of South Kensington
- Private Patio
- Access To Communal Gardens
- No Ongoing Chain
- Share Of Freehold
- High Ceilings

# Cranley Gardens, London, SW7



## Lower Ground Floor

Total area (approx.): 71.3 sq. m (767.4 sq. ft)

Storage (approx.): 1.7 sq. m (18.2 sq. ft)