



BEAUFORT GREEN

Cortayne Road, SW6

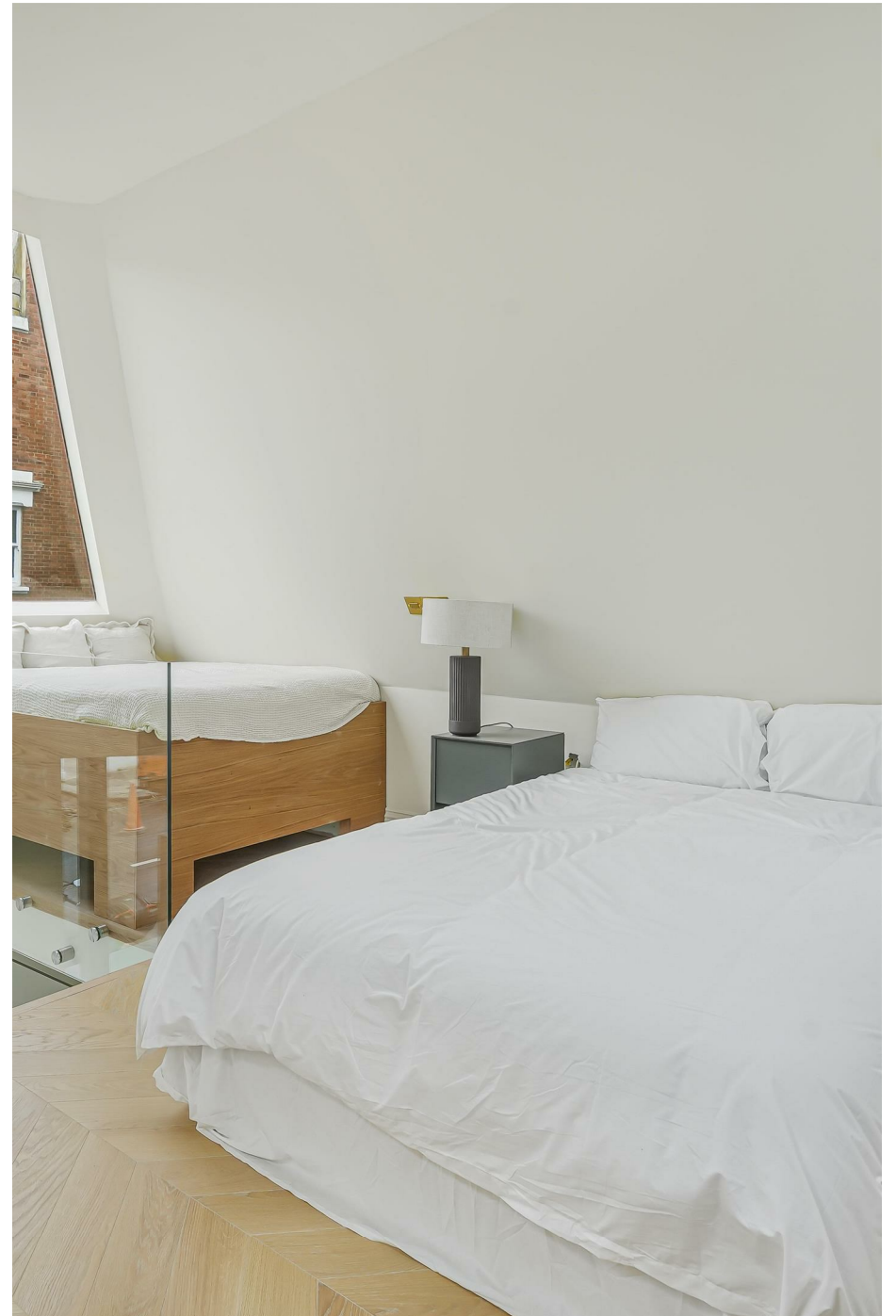
£4,000 Per month



Short Let

A new build masterpiece in the heart of Parsons Green. The property has an open plan kitchen living room, three double bedrooms and two bathrooms.



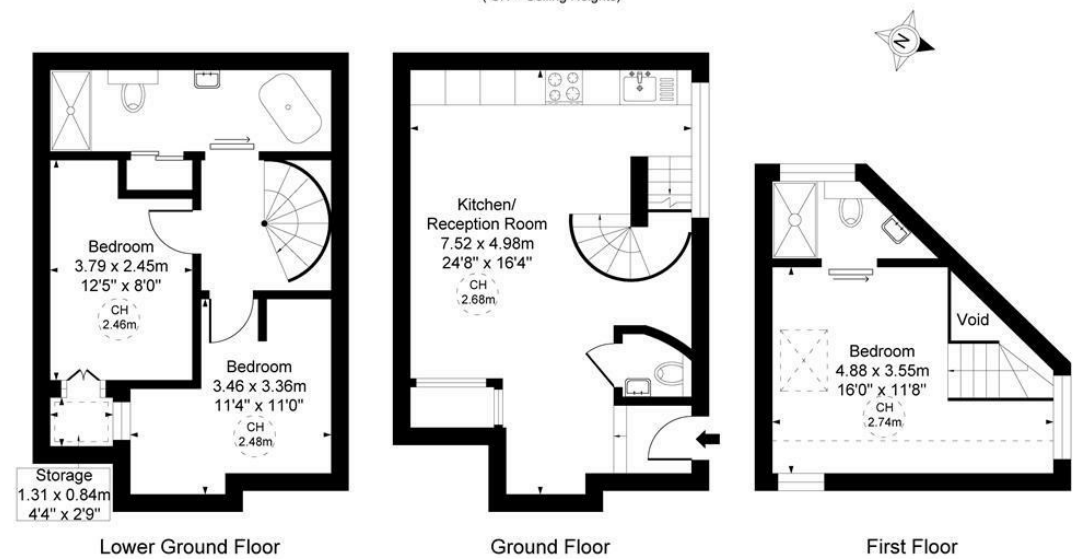


BEAUFORT GREEN



BEAUFORT GREEN

Cortayne Road, SW6
Approximate Gross Internal Area
84.83 sq m / 913 sq ft
(Excluding restricted height
under 1.5m 80.54 sq m 867 ft)
(CH = Ceiling Heights)



At a Glance.

- Three Double Bedrooms
- Open Plan Kitchen Living Room
- High Spec Throughout
- Two Bathrooms
- Own Front Door
- Prime Parsons Green Location

This plan is not to scale. It is for guidance and not for valuation purposes.
All measurements and areas are approximate only, and have been prepared in accordance with the current edition of the RICS Code of Measuring Practice.

BEAUFORT GREEN

02074594100

charlie@beaufortgreen.co.uk

263 New Kings Road
London
SW16 1DB