



**Guide Price**  
**£425,000**

**Freehold**

4x  2x  2x 

**Sovereign Way, Ryde,  
Isle of Wight, PO33**

**OVER 60?**

Secure this property  
for up to **59% less!**

**Pittis**   
Helping you move forwards



## Main features

- Deceptively spacious detached house
- Vacant possession - chain free
- Set in a highly sought after area on the outskirts of Ryde
- Good size conservatory and nice size rear garden with side access
- Ready to move straight into

## Accommodation

### GROUND FLOOR

- Hallway
- Kitchen: 13'6 x 9'3 (4.12m x 2.82m)
- Lounge: 18'2 x 11'7 (5.54m x 3.53m)
- Dining Room: 9'0 x 7'3 (2.75m x 2.21m)
- Cloakroom
- Conservatory: 9'4 x 8'11 (2.85m x 2.72m)

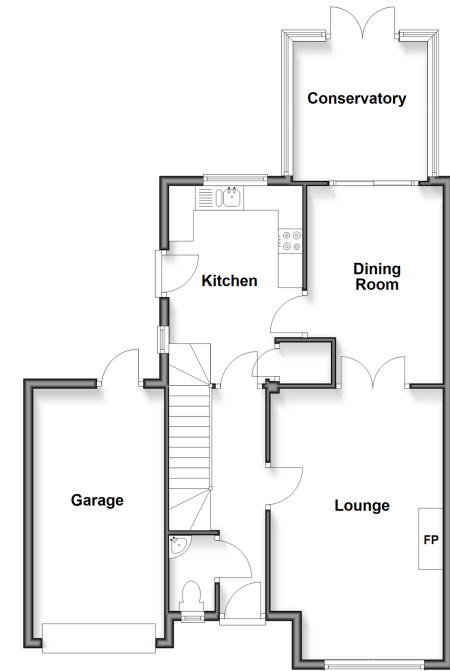
### FIRST FLOOR

- Landing
- Bedroom 1: 15'0 x 9'5 (4.58m x 2.87m)
- En-Suite Shower Room
- Bedroom 2: 10'8 x 10'3 (3.25m x 3.13m)
- Bedroom 3: 9'0 x 7'8 (2.75m x 2.34m)
- Bedroom 4: 8'0 x 7'8 (2.44m x 2.34m)
- Family Bathroom

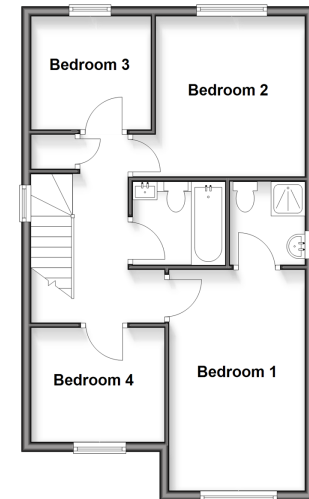
### OUTSIDE

- Front Garden
- Driveway
- Garage: 17'0 x 8'11 (5.19m x 2.72m)
- Rear Garden

**Ground Floor**  
Approx. 74.5 sq. metres (801.9 sq. feet)



**First Floor**  
Approx. 51.9 sq. metres (559.1 sq. feet)



**Call Ryde - 01983 564646 ■ pittis.co.uk**

- Legal advice should be taken to verify fixtures/fittings, planning, alterations and/or lease details
- Appliances & services are untested, dimensions are approximate and floor plans are not to scale
- Through a Homewise Home For Life Plan people aged 60+ can secure this property for up to 59% less, by purchasing a Lifetime Lease



60426908/20260228/DN/AGAN