



## 9 Millbank Residences, London, SW1P

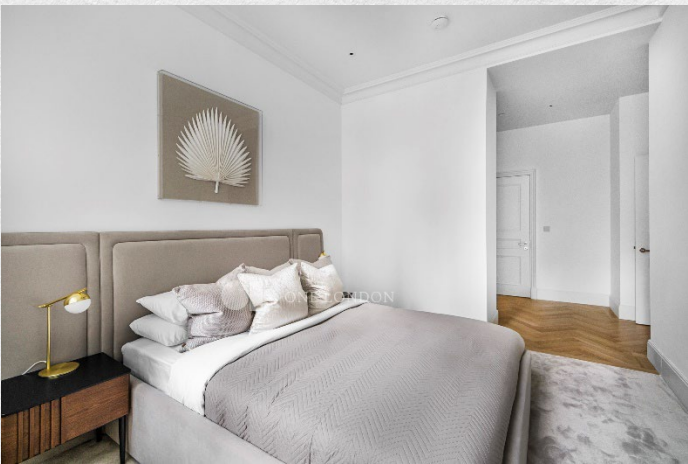
£5,000 pcm

- One double bedroom
- Two bathrooms
- Open plan living area
- 901 sq ft
- 24 hr concierge and security
- Premium residents' amenities
- Grade II Listed Building
- Prestigious location

*Step into a world of timeless sophistication with this stunning 901 sq. ft. residence, perfectly situated within a prestigious 1920s Grade II listed landmark in the heart of Westminster. This is more than an apartment; it is a statement of style and stature.*

*The interior dazzles with three-meter-high ceilings, creating an atmosphere of grandeur and boundless space. Whether you are hosting in the expansive open-plan reception area or retreating to the serene double bedroom with bespoke integrated storage, every inch reflects luxury. The home is completed by a sleek, fully fitted kitchen and two opulent bathrooms.*

*Life here extends beyond your front door. Residents enjoy exclusive access to world-class amenities, including a 24-hour concierge, a shimmering swimming pool, a private cinema, and tranquil gardens. Located moments from Tate Britain and the designer boutiques of Knightsbridge, you are perfectly placed to enjoy the very best of Mayfair and the Royal Parks.*





ONE LONDON

PROPERTY

9 Millbank, Westminster,  
London SW1P

SIZE

901 sq ft

One bedroom / Two bathrooms

CONTACT

0207 856 0396  
info@one-london.uk  
www.one-london.uk



\*\* For illustration purposes only. Could not be to scale.  
One-London aims to ensure accuracy but is not liable  
for any discrepancies.

BM11