



**Guide Price**  
**£375,000**

**Freehold**

3x  1x  1x 

**Cherwell Close,  
Tonbridge, Kent, TN10**

**OVER 60?**

Secure this property  
for up to **59% less!**

*Wards*  
Helping you move forwards



## Main features

- Ideally located for the High Street and transport links
- In the catchment area forwards after schools
- Off road parking for multiple cars
- Already extended creating the ideal kitchen/diner
- Bright spacious and well maintained throughout

## Accommodation

### GROUND FLOOR

Hallway

Lounge: 14'4 x 14'4 (4.37m x 4.37m)

Kitchen/Diner: 21'2 x 11'4 (6.46m x 3.46m)

### FIRST FLOOR

Landing

Bedroom 1: 13'3 x 7'9 (4.04m x 2.36m)

Bedroom 2: 8'9 x 7'9 (2.67m x 2.36m)

Bedroom 3: 10'2 x 5'6 (3.10m x 1.68m)

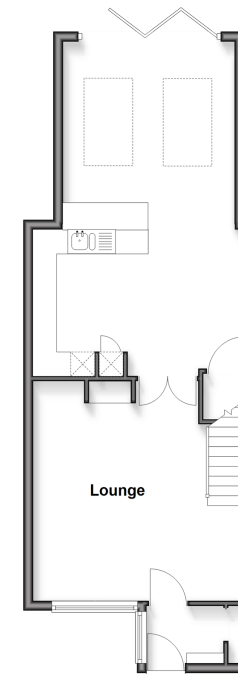
Bathroom

### OUTSIDE

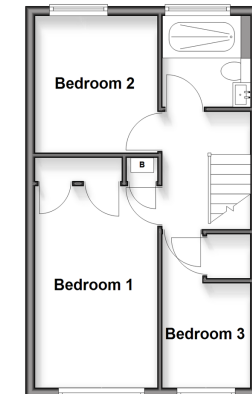
Rear Garden

Driveway

**Ground Floor**  
Approx. 51.2 sq. metres (551.2 sq. feet)



**First Floor**  
Approx. 34.5 sq. metres (371.0 sq. feet)



Call Tonbridge - 01732 770755 ■ [wardsof Kent.co.uk](http://wardsof Kent.co.uk)

■ Legal advice should be taken to verify fixtures/fittings, planning, alterations and/or lease details  
 ■ Through a Homewise Home For Life Plan people aged 60+ can secure this property for up to 59% less, by purchasing a Lifetime Lease

■ Appliances & services are untested, dimensions are approximate and floor plans are not to scale



14124215/20260203/HJ20/ER