



Arundel Terrace

Barnes, SW13

Asking Price
£1,675,000

An attractive period house, located on a quiet residential street, close to Hammersmith Bridge. The property offers 1,971 square feet of internal accommodation, arranged over four floors, and benefits from a south-west facing garden. The property boasts four/five bedrooms and three bathrooms.

On the raised ground floor, is a formal front reception room with a bay window and doors leading onto a dining room, a study/fifth bedroom. The underfloor heated lower ground floor offers a generous open-plan kitchen/breakfast room, a secondary reception / TV room and a store / laundry room. In addition there is an en-suite bedroom with separate entrance. Upstairs, the first and second floors provide three well-proportioned bedrooms with wardrobes and two bathrooms.

Arundel Terrace is located in North Barnes, adjacent to Castelnau, which is convenient for pedestrian and cycle access to underground routes at Hammersmith Broadway. There are several bus routes to nearby Barnes Station with regular services into London Waterloo and out of London. The property is moments from the River Thames and there is easy access to the popular towpath walk along the river. Nearby Barnes Village is home to the well-known duck pond and a weekly farmers' market. The Village offers an array of boutiques, cafés and High Street favourites. There are some excellent schools in the area, including renowned St Paul's Boys & Juniors, The Harrodian, The Swedish School, Lowther Primary and St Osmund's Primary.

This property is in a conservation area CA25 Castelnau.

CHESTERTONS



Arundel Terrace

Barnes, SW13

- Four Storey 4-5 Bedroom Period House
- Presented in Good Condition
- Popular Cul-de-sac Road
- South West Facing Garden
- Convenient for Hammersmith Station
- EPC Rating E



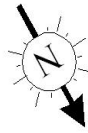
Tenure: Freehold
 Local Authority: London Borough of Richmond upon Thames
 Council Tax Band: G

Score	Energy rating	Current	Potential
92+	A		
81-91	B		
69-80	C		79 C
55-68	D		
39-54	E	53 E	
21-38	F		
1-20	G		

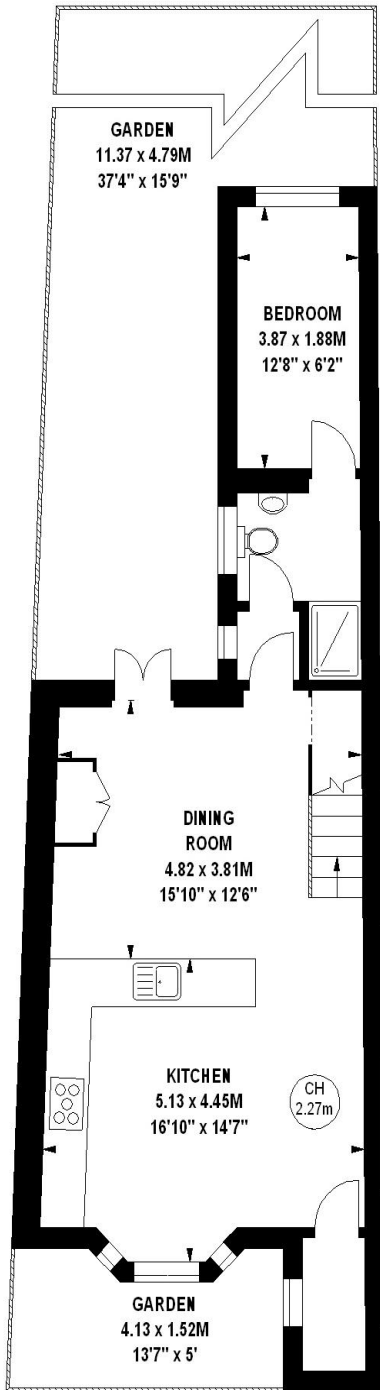
Chestertons Barnes Sales
 68-69 Barnes High Street
 Barnes
 London
 SW13 9LD
 sales.barnes@chestertons.com
 020 8748 8833
 chestertons.com

Arundel Terrace, SW13

Approximate gross internal area
183.11 sq m / 1971 sq ft

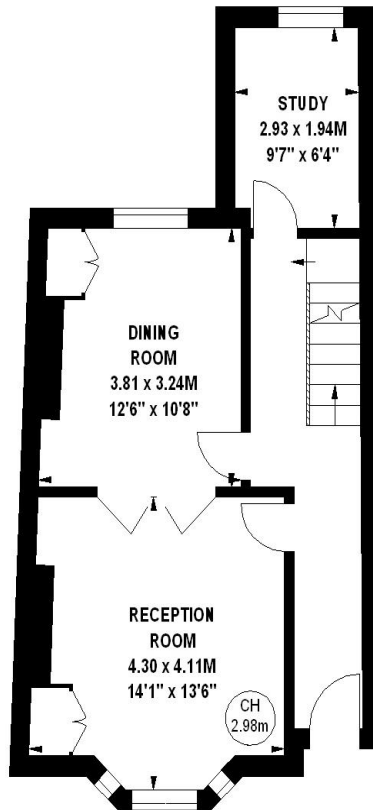


Key :
CH - Ceiling Height



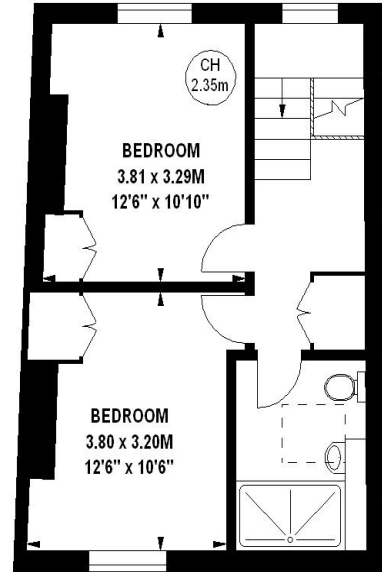
603 sq ft

Lower Ground Floor



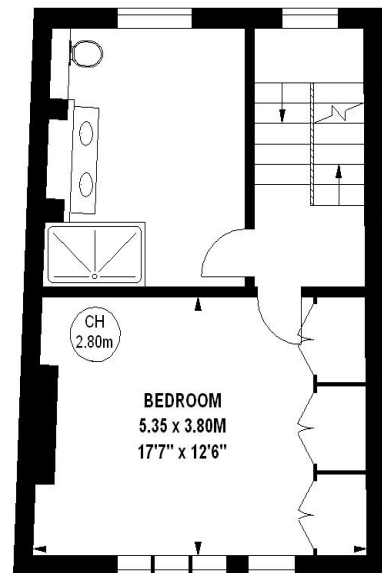
499 sq ft

Ground Floor



438 sq ft

Second Floor



431 sq ft

First Floor

The floor plan is not to scale and measurements and areas shown are approximate and therefore should be used for illustrative purposes only. The plan has been prepared in accordance with the RICS code of Measuring Practice and whilst we have confidence in the information produced, it must not be relied on. If there is any aspect of particular importance, you should carry out or commission your own inspection of the property.
Copyright of FeaturePRO.