



**Moundsmere**  
— Estate Management —

**FOR SALE**

Honeybee House, Brown Candover  
Guide price: £525,000





## ABOUT

Nestled in the heart of the sought-after village of Brown Candover, this charming three-bedroom home offers approximately 1,156 sq ft (107.4 sq m) of well-balanced and versatile living accommodation, ideal for family life or those seeking a peaceful rural setting within easy reach of nearby market towns.





## ACCOMMODATION



The ground floor provides generous and flexible reception space. A bright and spacious sitting room forms the heart of the home, with dual log burner, perfect for both relaxing and entertaining. This is complimented by a separate dining room, ideal for more formal occasions or adaptable as a playroom or study.





## ACCOMMODATION

To the rear, the well-proportioned kitchen/dining room (19'0) offers ample space for everyday family living, with direct access to the garden. A convenient cloakroom/WC completes the ground floor.

Externally, the property benefits from a separate shed and log store, providing useful additional storage.

Upstairs, the property features three comfortable bedrooms, including a particularly generous principal bedroom (13'9), alongside a well-appointed family bathroom. The layout provides practical proportions throughout, making excellent use of the available space.







Brown Candover is a picturesque Hampshire village known for its attractive countryside, strong community spirit, and convenient access to Winchester, Alresford, and Basingstoke. Surrounded by rolling farmland and scenic walks, it offers an idyllic rural lifestyle while remaining well-connected.

A wonderful opportunity to acquire a spacious village home with flexible accommodation in an enviable countryside setting.



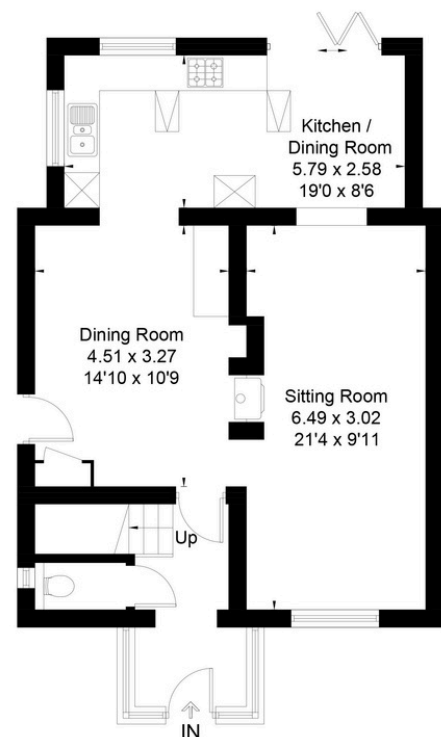


EPC Rating : D  
Oil fired central heating  
Mains water and electricity  
Private drainage  
Basingstoke and Deane : Band D

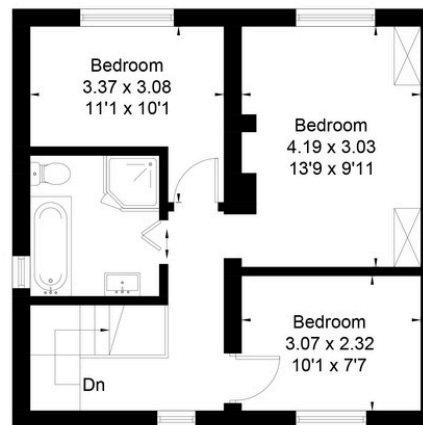
---



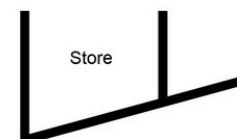
Approximate Floor Area = 107.4 sq m / 1156 sq ft (Excluding Store / Shed)



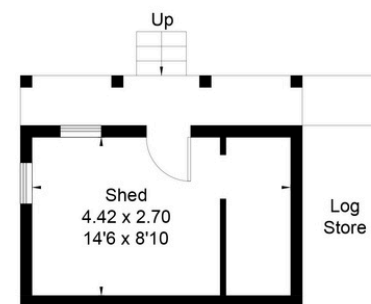
Ground Floor



First Floor



(Not Shown In Actual Location / Orientation)



(Not Shown In Actual Location / Orientation)



This floor plan has been drawn in accordance with RICS Property Measurement 2nd edition.

All measurements, including the floor area, are approximate and for illustrative purposes only. @fourwalls-group.com #98712