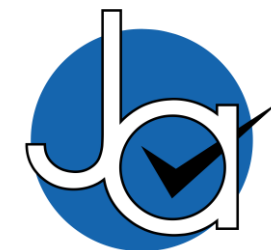




2 bedroom Semi-Detached House located in Witham.

Asking Price Of
£325,000

Find us on..



JOHN ALEXANDER
ESTATE AGENTS

Brown Close Witham CM8 2GJ



2



2



1



EPC

B



FULL DESCRIPTION

OVERVIEW

We are delighted to offer this two bedroom semi-detached house benefiting from an En-Suite shower room to the master bedroom and a stylish media wall to the Lounge/Diner incorporating a remote control electric fire.

ENTRANCE HALL

Stairs to first floor, radiator, understairs cupboard.

CLOAKROOM

Low level WC, wash basin, radiator.

KITCHEN

8' 6" x 8' 5" (2.59m x 2.57m)

One and a half bowl single drainer sink unit with cupboards under, matching base and eye level cupboards, work surfaces, space for washing machine, dishwasher, oven, hob and extractor fan, space for fridge freezer, wall mounted gas boiler, radiator, double glazed window to rear.

LOUNGE/DINER

19' 3" x 10' 5" (5.87m x 3.18m)

Double glazed window to front, French doors to rear, Media wall incorporating remote control electric fire, two radiators.

LANDING

Access to loft space, radiator, airing cupboard.

BEDROOM ONE

10' 6" x 8' 2" (3.2m x 2.49m)

Double glazed window to front, radiator.

EN-SUITE SHOWER ROOM

Double shower, wash basin, low level WC, chrome heated towel rail, obscure double glazed window to front.

BEDROOM TWO

11' 8" x 8' 7" (3.56m x 2.62m)

Double glazed window to rear, radiator.

BATHROOM

White suite comprising of panelled bath with shower above and guard, wash basin, low level WC, chrome heated rail, obscure double glazed window to rear.

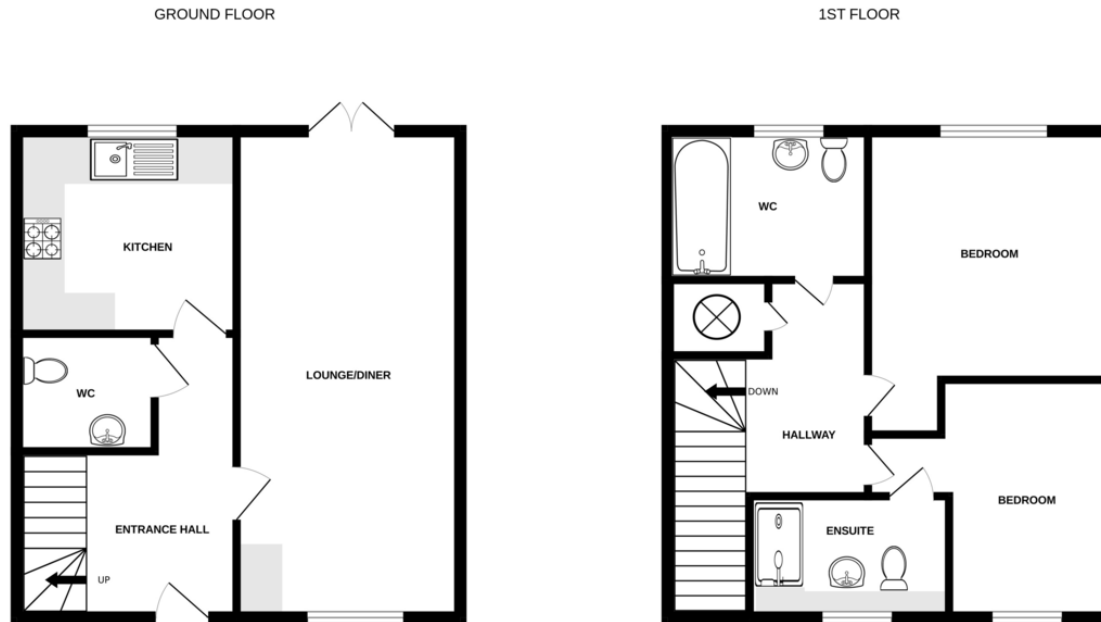
OUTSIDE

Side access to rear garden which is laid to lawn, shed to remain.

There is a driveway to the side providing off road parking for two cars.



FLOORPLAN



Whilst every attempt has been made to ensure the accuracy of the floorplan contained here, measurements of doors, windows, rooms and any other items are approximate and no responsibility is taken for any error, omission or mis-statement. This plan is for illustrative purposes only and should be used as such by any prospective purchaser. The services, systems and appliances shown have not been tested and no guarantee as to their operability or efficiency can be given.
Made with Metroplex ©2020

DIRECTIONS

CONTACT

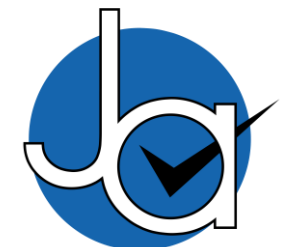
**1 Church Road
Tiptree
Colchester
Essex
CO5 0LG**

E info@john-alexander.co.uk

T 01621 814334

www.john-alexander.co.uk

Find us on..



JOHN ALEXANDER
ESTATE AGENTS