



BYWATER HERRING
SALES & LETTINGS

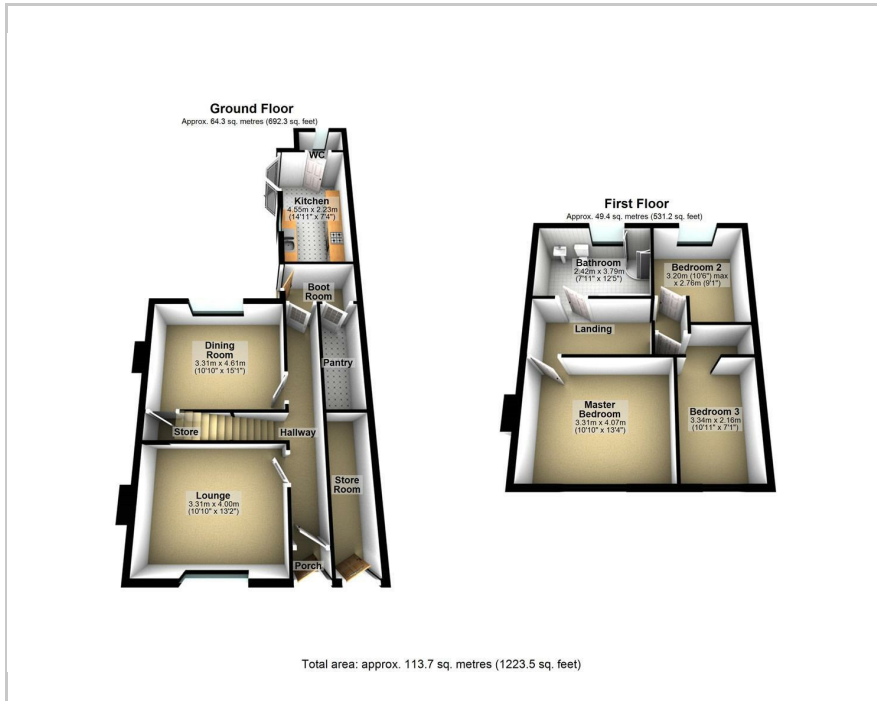
- A TRADITION OF TRUST -



Cromwell Road, Rushden
Offers In The Region Of £249,500



Floor Plan

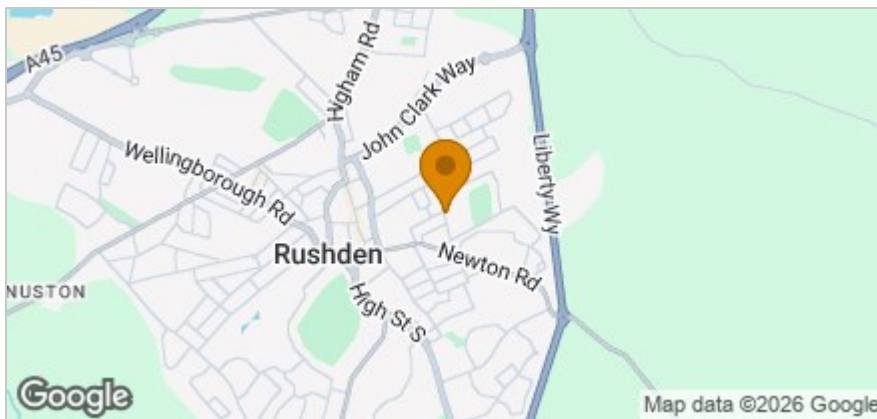


Accommodation

- A thoughtfully renovated mid-terrace, ready for you to make it your own
- Brand new navy shaker kitchen with stylish splashback tiles, stone worktops and a gas hob
- Large four-piece family bathroom with separate shower enclosure and bath
- Fully renovated throughout with new electrics, new boiler, new heating system and new flooring
- Two reception rooms plus a pantry and a boot room
- Original hallway flooring restored and retained as a nod to the house's Victorian roots
- Rear garden with new lawn, paved patio and gated rear access - with French doors from the kitchen
- Newton Road Primary School is a five minute walk; Rushden Academy about 10 minutes by bike
- Third bedroom has a small inner lobby perfect for use as a walk-in wardrobe or study area
- Wellingborough station is 15 mins drive away, with trains reaching St Pancras in under an hour



Area Map



Energy Efficiency Rating		Current	Potential
Very energy efficient - lower running costs			
(92 plus)	A		
(81-91)	B		85
(69-80)	C		
(55-68)	D	65	
(39-54)	E		
(21-38)	F		
(1-20)	G		
Not energy efficient - higher running costs			
England & Wales		EU Directive 2002/91/EC	



These particulars, whilst believed to be accurate are set out as a general outline only for guidance and do not constitute any part of an offer or contract. Intending purchasers should not rely on them as statements of representation of fact, but must satisfy themselves by inspection or otherwise as to their accuracy. No person in this firm's employment has the authority to make or give any representation or warranty in respect of the property.