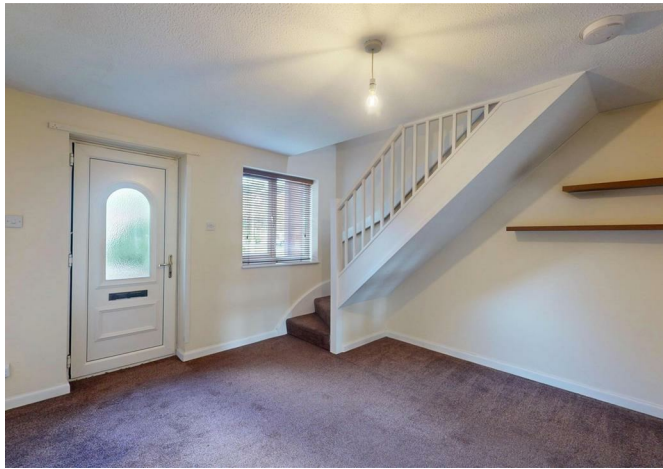




12, Bishops Close, West Felton, Oswestry, SY11 4LY
£800 Per Month



12, Bishops Close, West Felton, Oswestry, SY11 4LY

£800 Per Month

VIRTUAL TOUR AVAILABLE: A lovely two bedroom mid terraced house located in a cul-de-sac, in the village of West Felton just under 14 miles from Shrewsbury. Benefitting from nearby amenities and an allocated parking space within a communal residents only car park.

Available: Immediately

Description

Comprising: Living room, kitchen including oven & induction hob. Stairs leading to first floor landing, family bathroom with shower, double bedroom, single bedroom. Front and rear garden including shed. Private car parking for one car. Double Glazing. Electric storage heating. EPC D.



Unfurnished

Council Tax Band: A

Available: 11th June 2026

EPC: D

Floor Plans



These particulars, whilst believed to be accurate are set out as a general outline only for guidance and do not constitute any part of an offer or contract. Intending purchasers should not rely on them as statements of representation of fact, but must satisfy themselves by inspection or otherwise as to their accuracy. No person in this firm's employment has the authority to make or give any representation or warranty in respect of the property.