



Nethercourt Gardens
, Ramsgate, CT11 0RY

Offers In The Region Of £325,000



This three-bedroom detached bungalow is quietly welcoming. Solid and straightforward, it offers space, light, and the kind of potential that invites you to make it your own.

Set back from the road behind a low brick wall, the property has off-street parking for one car, with scope to extend if needed, and a garage with an up-and-over door.

Step inside and the hallway leads to the bedrooms at the front of the house. The main bedroom is a generous double, filled with sunlight from a bay window. Bedroom two is another comfortable double, while the third bedroom is a single - ideal as a home office, studio, or reading nook.

The bathroom sits opposite bedroom two and is very much of its era, with timber tongue-and-groove panelling, a corner bath, a pedestal basin with a scalloped edge, and a toilet. There's also a separate WC next door for added convenience.

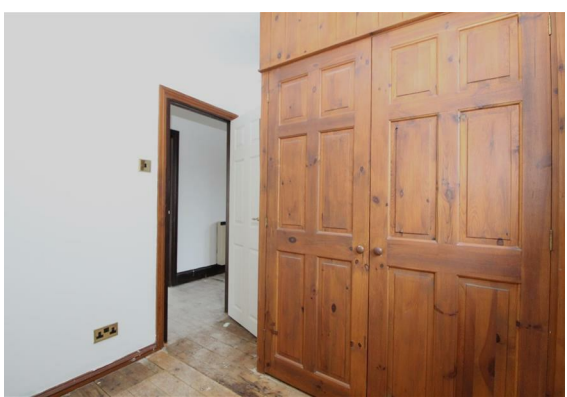
At the rear of the bungalow, the kitchen is fully functional, with maroon doors, contrasting beech-effect trim, and small ceramic wall tiles. It works as it is, while offering clear scope to modernise or personalise.

Next to the kitchen, the lounge opens through sliding doors into the conservatory. Anchored by a feature fireplace, the lounge is a calm, light-filled space, and the conservatory spans the full width of the bungalow, providing uninterrupted views of the garden. Beneath it is a large storage area, perfect for garden furniture or tools.

The garden stretches to approximately 95ft, mostly laid to lawn with mature shrubs and plants along the borders. It feels private, calm, and generous - a space with room to relax, play, or create something special.

Nethercourt is a peaceful, well-connected estate in Ramsgate known for its friendly, community feel and proximity to the beach and local parks. It's a quiet, walkable area with amenities and good links to the coast and wider Thanet towns.

The bungalow that could be yours - step inside with TMS Estate Agents!





HALLWAY

BEDROOM ONE

16'8" x 13'5" (5.10m x 4.11m)

BEDROOM TWO

11'0" x 9'9" (3.36m x 2.98m)

BATHROOM

6'11" x 5'4" (2.12m x 1.63m)

TOILET

8'7" x 2'9" (2.63m x 0.86m)

BEDROOM THREE

7'8" x 7'5" (2.34m x 2.27)

LOUNGE

13'5" x 11'11" (4.10m x 3.65m)

KITCHEN

10'2" x 9'4" (3.11m x 2.86m)

CONSERVATORY

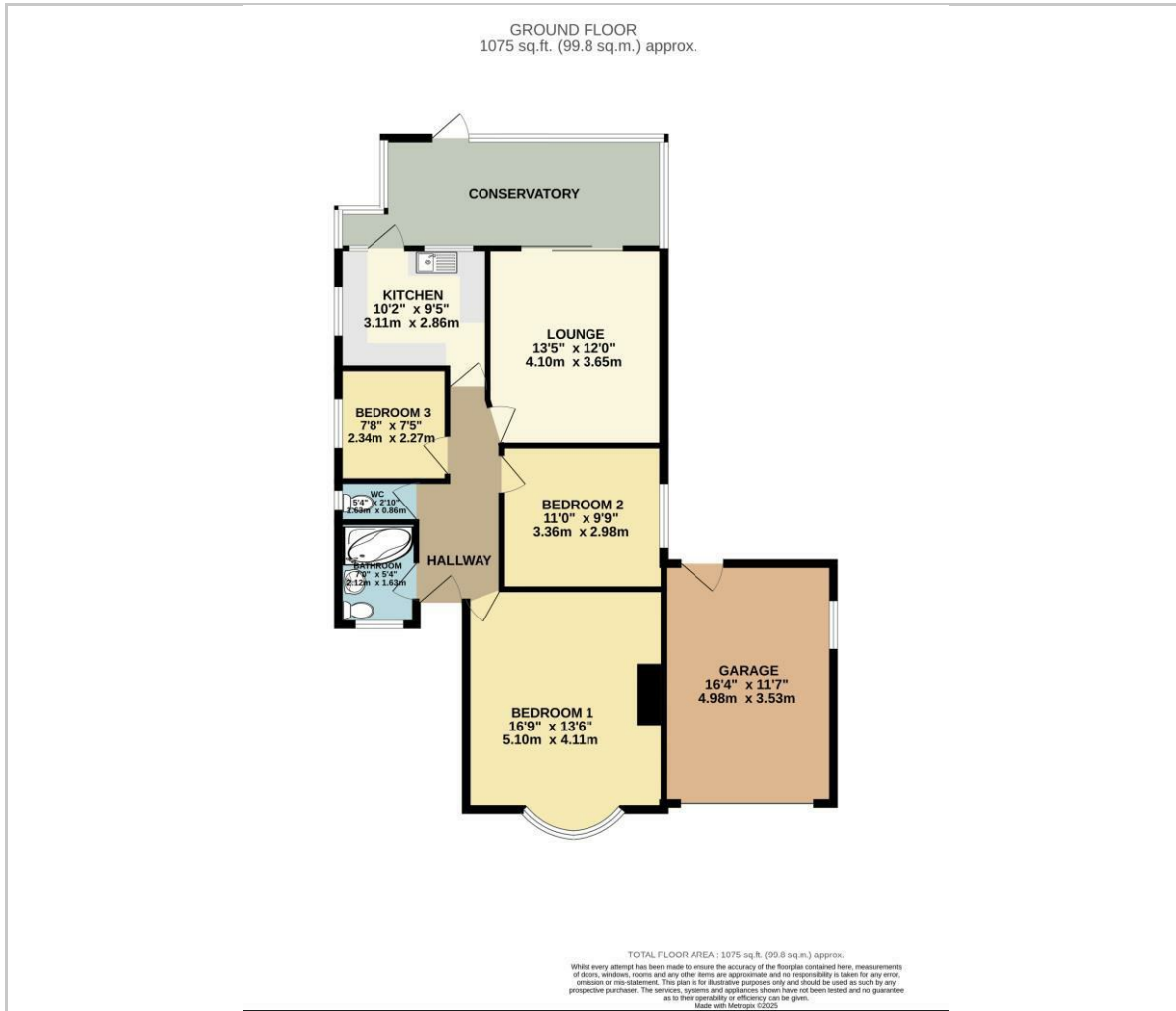
GARAGE



Identification checks

Should a purchaser(s) have an offer accepted on a property marketed by TMS Estate Agents, they will need to undertake an identification check. This is done to meet our obligation under Anti Money Laundering Regulations (AML) and is a legal requirement. We use a specialist third party service to verify your identity. The cost of these checks is £50 plus VAT or £60 inc. VAT per purchaser, which is paid in advance, when an offer is agreed and prior to a sales memorandum being issued. This charge is non-refundable under any circumstances.

Floor Plan



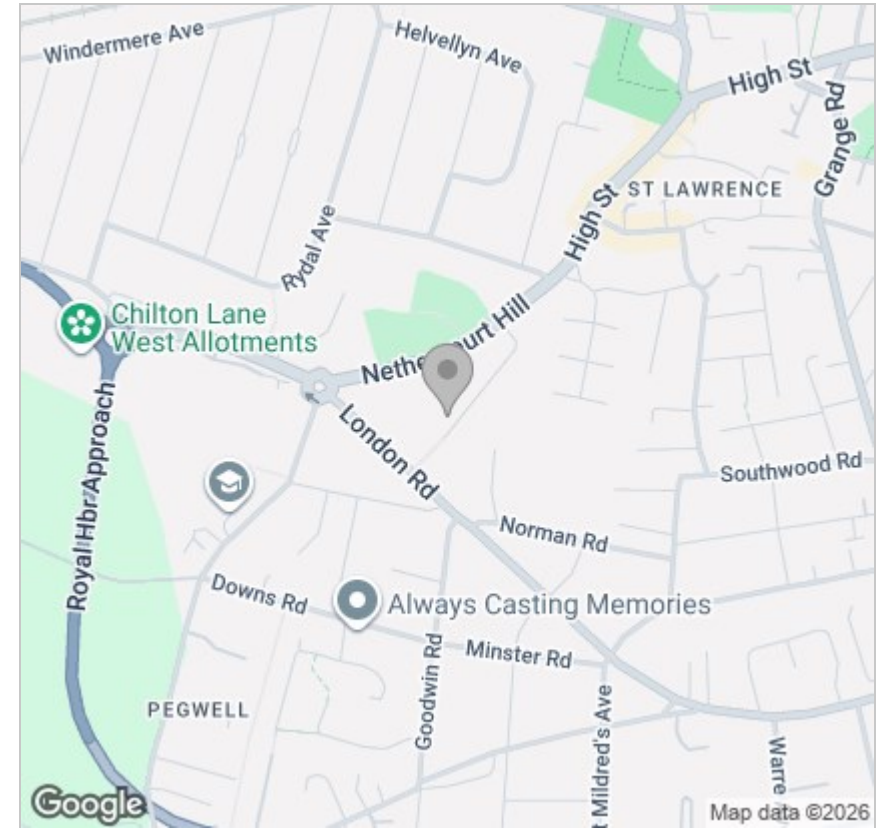
Viewing

Please contact our TMS ESTATE AGENTS Office on 01843 866055 if you wish to arrange a viewing appointment for this property or require further information.

These particulars, whilst believed to be accurate are set out as a general outline only for guidance and do not constitute any part of an offer or contract. Intending purchasers should not rely on them as statements of representation of fact, but must satisfy themselves by inspection or otherwise as to their accuracy. No person in this firm's employment has the authority to make or give any representation or warranty in respect of the property.

Kent Innovation Centre Millennium Way, Broadstairs, Kent, CT10 2QQ
t 01843 866055 e info@tmsestateagents.com www.tmsestateagents.com

Area Map



Energy Efficiency Graph

