



WILL CAMPBELL

exp[®] UK

@ will.campbell@exp.uk.com

willcampbell.exp.uk.com

07518 198 785

Flat 2, Wilton Court, 23, Westmount Close,

£400,000

🛏️ 2 🚿 2 🚗 1

- Ground floor apartment with private patio access
- Bright, open-plan kitchen/living space
- Two generous double bedrooms
- Separate modern family bathroom
- Secure entry system
- Prestigious Hamptons development
- Contemporary fitted kitchen with integrated appliances
- Principal bedroom with en-suite shower room
- Allocated off-street parking
- Residents' gym, tennis court and landscaped parkland grounds



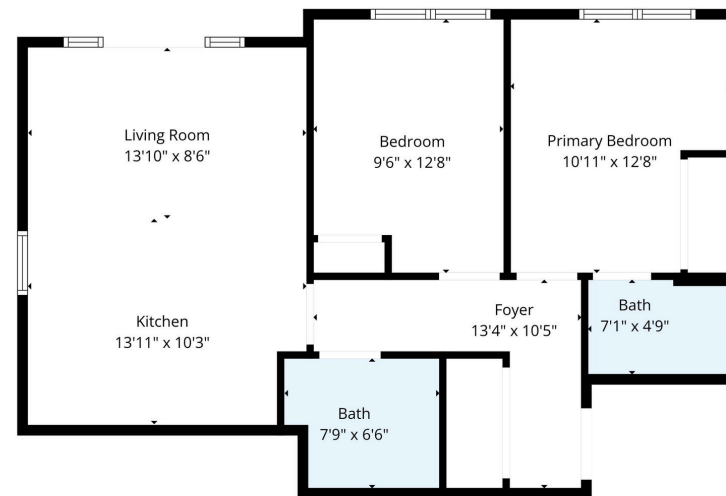
Please Quote For All Enquiries: WC0847

A stylish ground floor apartment in the prestigious Hamptons development, offering contemporary open-plan living and private patio access.

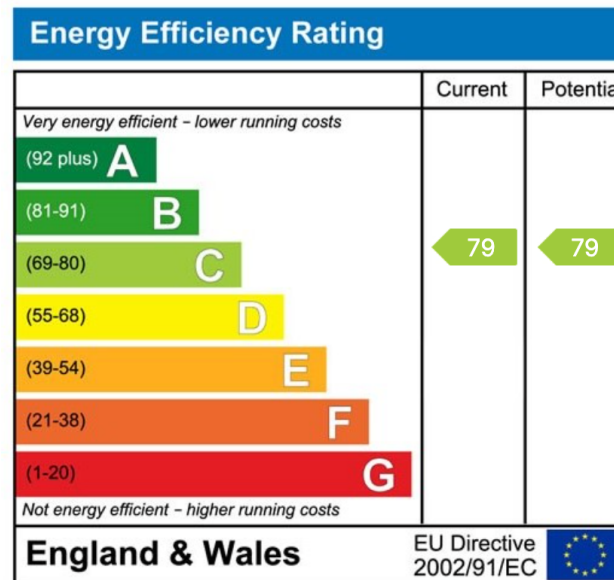
This beautifully presented two double bedroom home features a bright kitchen/living space designed for modern lifestyles, a principal bedroom with en-suite, separate bathroom, secure entry and allocated parking.

Set within landscaped parkland with residents' gym and tennis court, and with excellent links into London Waterloo, this is smart, low-maintenance living in one of the area's most desirable settings.





TOTAL: 714 sq. ft.
1st floor: 714 sq. ft.
EXCLUDED AREAS: WALLS: 59 sq. ft.



eXp World UK Ltd is a registered company at Corporation Service Company (UK) Limited, 5 Churchill Place, 10th Floor, London, United Kingdom, E14 5HU. Registered company number is 12016573. VAT Registration Number is 327 4120 29