

## Acton Lane, W4

£484 Per calendar month

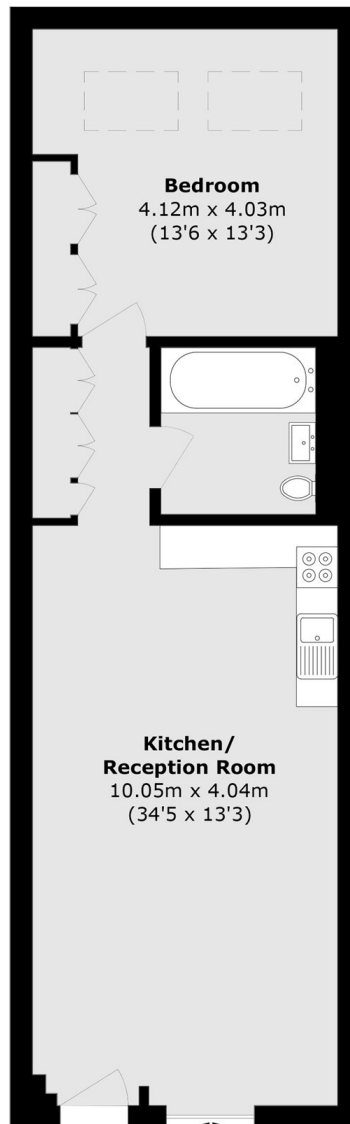
A new build lower ground floor apartment within a gated development, featuring an open-plan kitchen leading into a bright and spacious lounge with direct access to private patio garden.

Set just behind Acton Lane and within a short walk of Chiswick Park, South Acton and Turnham Green stations. Turnham Green Terrace and Chiswick High Road offer a brilliant selection of amenities.

### Features

- Gated Development
- One Bedroom
- Open Plan Kitchen
- Private Patio Garden
- Close To Transport
- Modern Finish

# Acton Lane, London, W4



Total area (approx.): 57.6 sq. m (620.0 sq. ft)