



## Portland Place, W1B

£600,000

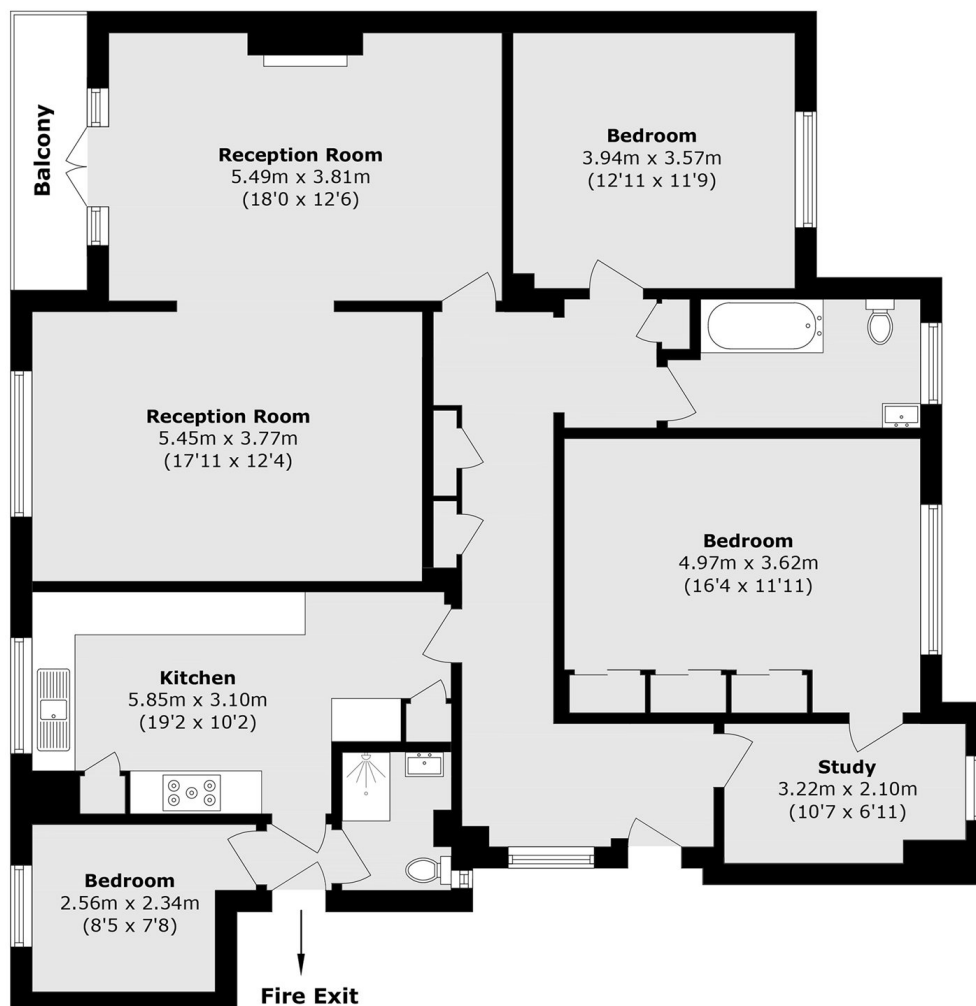
A three bedroom apartment situated on the second floor of this beautiful period building on Portland Place. The current lease expires in April 2035 and the property requires updating.

Located on Portland Place moments away from Park Crescent, Regents Park and Marylebone High Street. There are excellent transport links from Regent's Park, Warren Street, Baker Street and Marylebone Stations.

### Features

- Lease Term 9 Years
- Overlooks Mews
- Dual Reception With Balcony
- Close To Regents Park
- Uniformed Concierge
- Passenger Lift

# Portland Place, London, W1B



Total area (approx.): 104.4 sq. m (1123.7 sq. ft)

Balcony area (approx.): 2.8 sq. m (30.1 sq. ft)