

Coles Green Road, NW2

£350,000

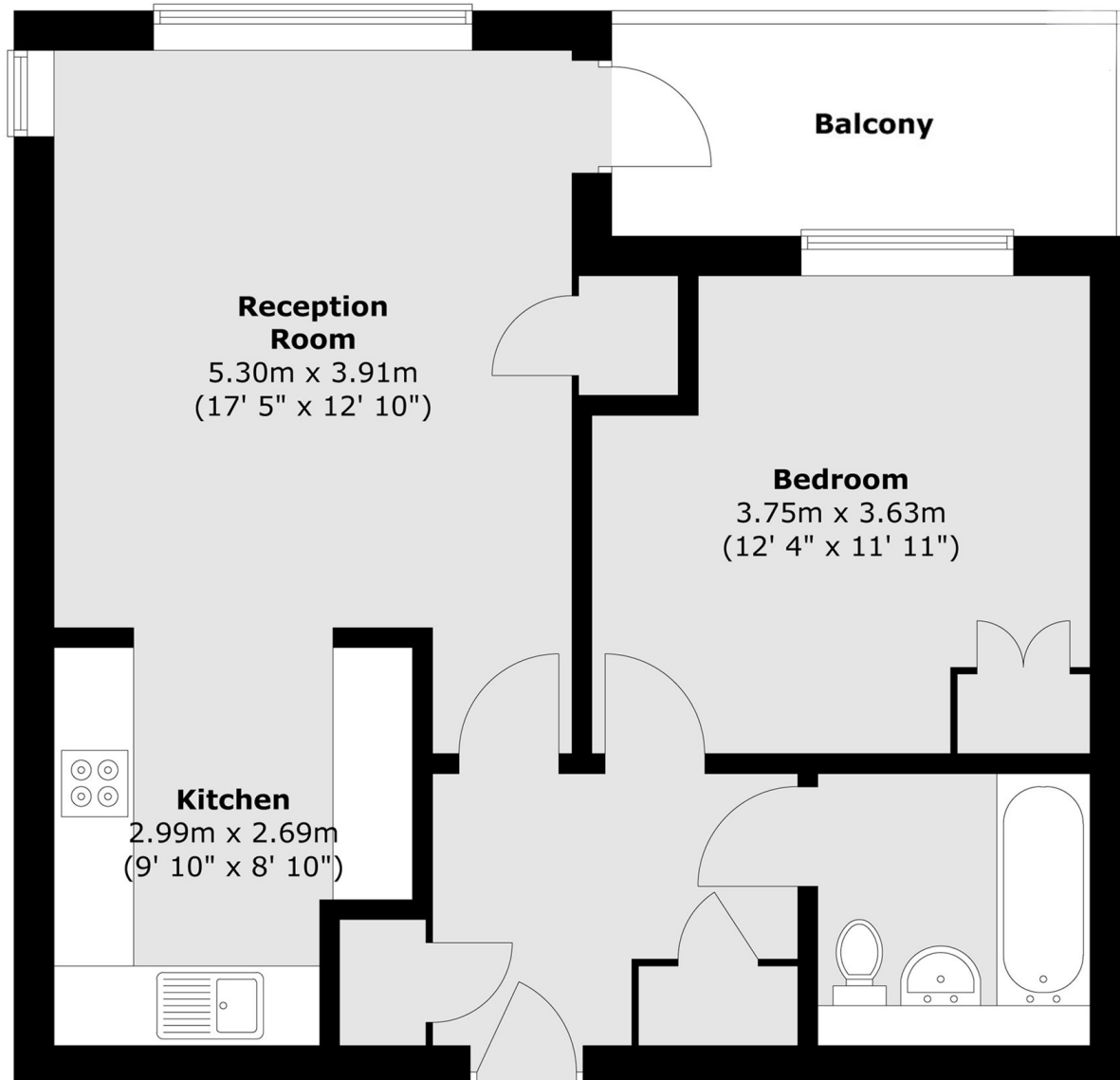
This one bedroom third floor flat has a spacious open plan living area with a modern fitted kitchen, a good size double bedroom, a tiled family bathroom, a well sized balcony and good storage space throughout.

Coles Green Court is ideally situated with a variety of amenities in Dollis Hill, Willesden, Cricklewood and Brent Cross. The A5, A406 and M1 are also nearby allowing easy access in and out of London.

Features

- Purpose Built Flat
- Third Floor
- One Bedroom
- Open Plan Living Area
- Modern Fitted Kitchen
- Chain Free

Coles Green Road, London, NW2



Total area (approx.) : 52.2 sq. m (562 sq. ft)
Total balcony area (approx.) : 5.1 sq. m (55 sq. ft)