



Guide Price
£575,000

Freehold

3x  2x  2x 

**Mill Lane, Hythe, Kent,
CT21**

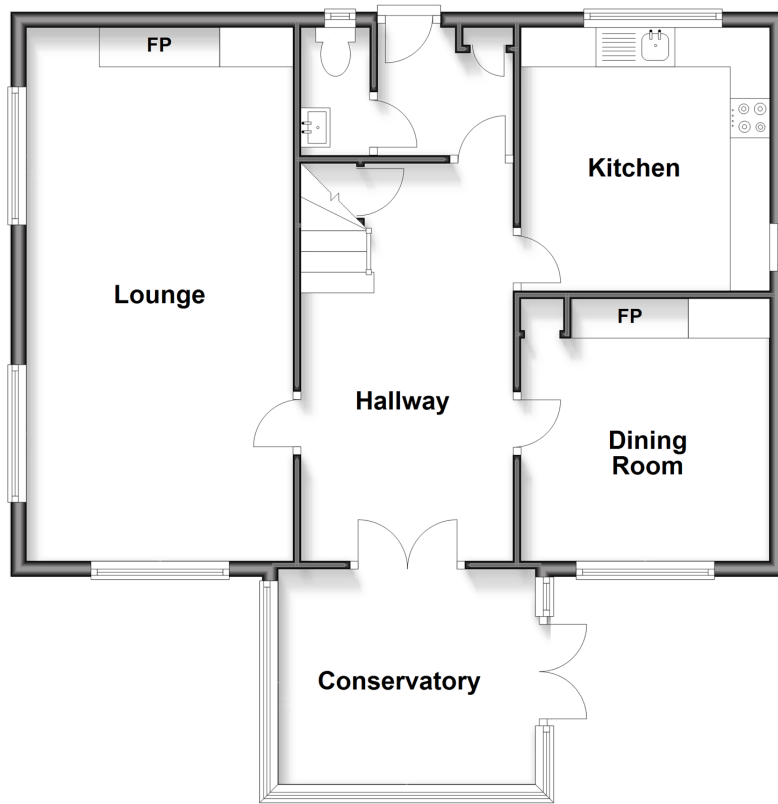
OVER 60?

Secure this property
for up to **59% less!**

Wards
Helping you move forwards

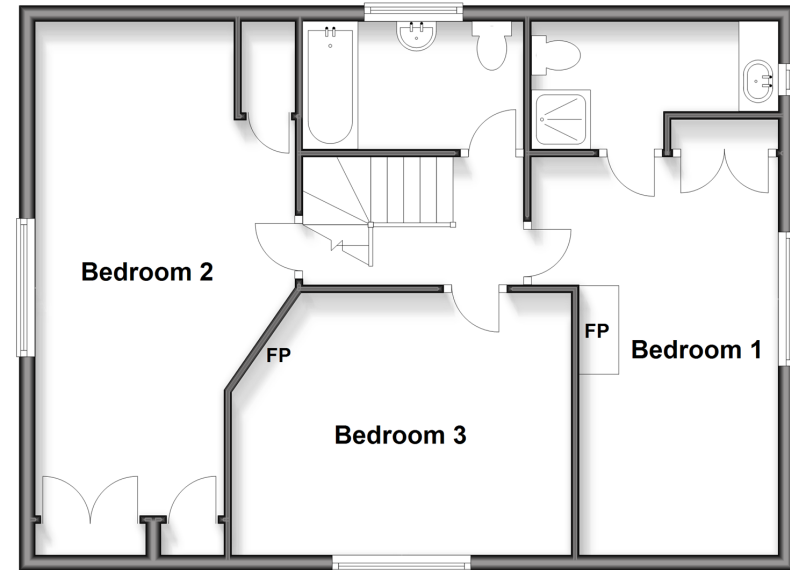
Ground Floor

Approx. 73.0 sq. metres (785.8 sq. feet)



First Floor

Approx. 63.8 sq. metres (686.4 sq. feet)



Accommodation

GROUND FLOOR

Conservatory: 11'9 x 9'5 (3.58m x 2.87m)

Hallway: 16'6 x 8'10 (5.03m x 2.69m)

Dining Room: 10'3 x 9'8 (3.13m x 2.95m)

Lounge: 22'4 (6.81m) narrowing to 21'4 (6.51m) x 11'1 (3.38m)

Kitchen: 10'8 x 10'2 (3.25m x 3.10m)

Cloakroom

FIRST FLOOR

Landing

Bedroom 1: 16'10 (5.13m) x 10'3 (3.13m) narrowing to 8'3 (2.52m)

En-Suite Shower Room: 10'2 x 5'2 (3.10m x 1.58m)

Bedroom 2: 20'1 (6.13m) x 11'2 (3.41m) narrowing to 8'1 (2.47m)

Bedroom 3: 14'11 x 10'7 (4.55m x 3.23m)

Bathroom: 8'9 x 5'5 (2.67m x 1.65m)

OUTSIDE

Off Road Parking

Front & Rear Gardens



Main features

- Located just a few minutes' walk from Hythe High Street
- Large lounge and separate dining room, open fireplaces
- Lovely roof top views to wake up to
- Beautiful open entrance hallway
- En-suite shower room to bedroom 1
- No onward chain



Nearest Schools

Primary Schools: Hythe Bay CofE Primary 0.7 miles, Saltwood CofE Primary 0.7 miles
Secondary Schools: Brockhill Park Performing Arts College 1.2 miles, Folkestone School for Girls 2.5 miles, Harvey Grammar School 2.9 miles



Transport Information

Train Stations: Sandling 1.4 miles, Folkestone West High Speed Link 2.7 miles, Westenhanger 2.7 miles



Address

Mill Lane, Hythe, Kent, CT21



Directions

For directions to this property please contact us.



Wards
Helping you move forwards

Call Hythe Branch 01303 267473 ■ wardsofkent.co.uk



- Legal advice should be taken to verify fixtures/fittings, planning, alterations and/or lease details
- Appliances & services are untested, dimensions are approximate and floor plans are not to scale
- Through a Homewise Home For Life Plan people aged 60+ can secure this property for up to 59% less, by purchasing a Lifetime Lease

EPC RATING

| CURRENT: | POTENTIAL: |
|----------|------------|
| D(59) | C(78) |

12825256/20260225/MIB/MIB