



## Pickfords Wharf, N1

£795,000

A two double bedroom maisonette located within a canal side development. This split level property has been modernised throughout and benefits from a private entrance and rear garden.

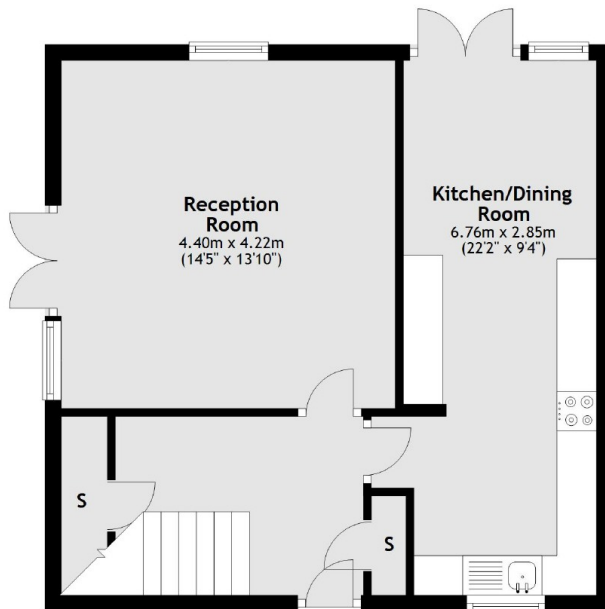
Wharf Road is great location next to City Road Basin with the popular shops, bars and restaurants of Upper Street, Old Street and the surrounding area within easy reach.

### Features

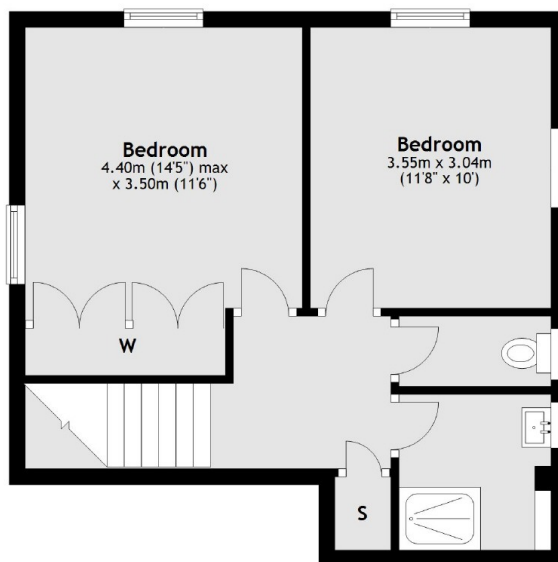
- Two Double Bedrooms
- Private Garden
- Canal Side Development
- Modernised Throughout
- Split Level
- Dual Aspect

# Pickfords Wharf, London, N1

## Ground Floor



## First Floor



Total area: approx. 85.6 sq. metres (921.0 sq. feet)