

*Symonds
Taylor*

33 Myrtle Grove, Jesmond

Newcastle Upon Tyne

Offers Over £275,000



33 Myrtle Grove

Jesmond, Newcastle Upon Tyne

This impressive first floor Tyneside apartment has 3 bedrooms, been much improved by the present owners, enjoys a great setting on a sought after street in the heart of Jesmond that will be ideal for first time buyers & couples and which will require an early internal inspection.

Accommodation comprises:

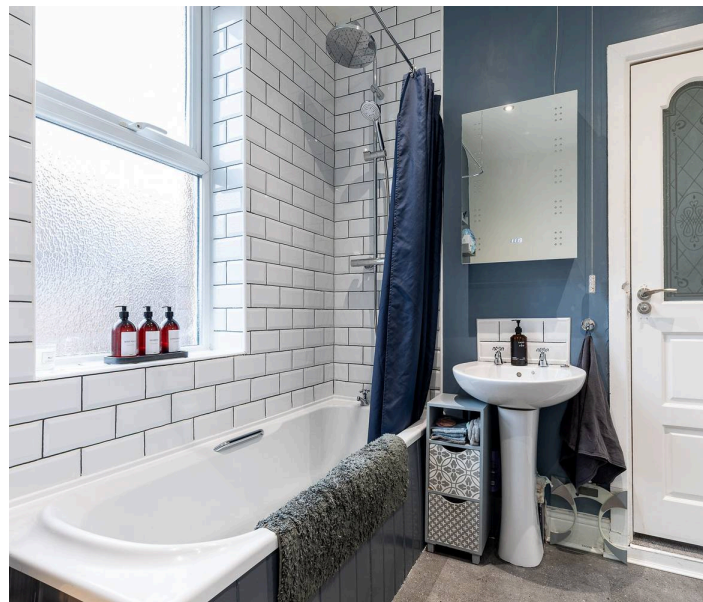
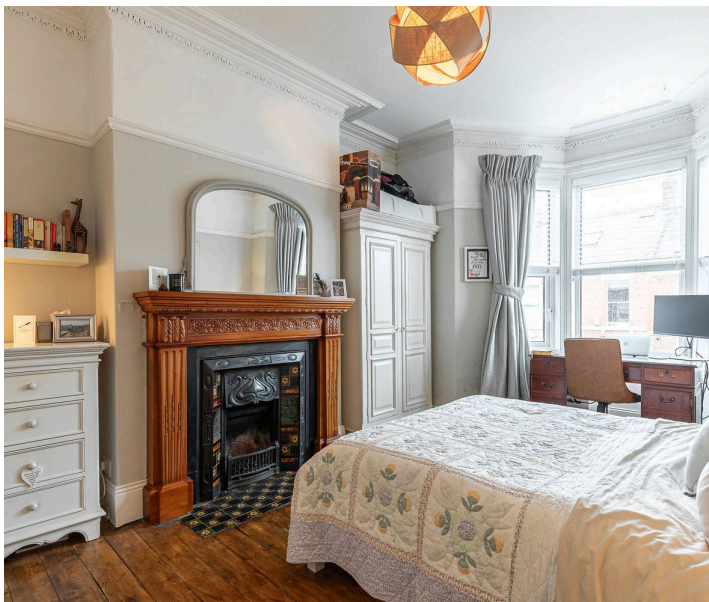
Ground floor: Entrance vestibule.

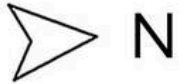
First floor: Landing, principal bedroom, bedroom 2, bedroom 3, sitting room, kitchen, bathroom/wc.

Outside: Rear courtyard.

Council Tax band: B

Tenure: Leasehold





33 MYRTLE GROVE, JESMOND, NE2 3HT

APPROXIMATE GROSS INTERNAL AREA 85 SQ M 919 SQ FT - NOT TO SCALE - FOR ILLUSTRATIVE PURPOSES ONLY
All measurements and fixtures including doors and windows are approximate and should be independently verified.



Symonds Taylor

101 St. Georges Terrace, Jesmond - NE2 2DN

0191 338 9999 • hello@symondstaylor.co.uk • www.symondstaylor.co.uk

All descriptions, plans or references to condition are given in good faith only. Whilst every endeavour is made to ensure accuracy, please check with us on any points of especial importance to you.