



OAKFIELD

Flat 82, 6 Martin Court, Hastings, TN34 1EF

£1,095 Per Calendar Month





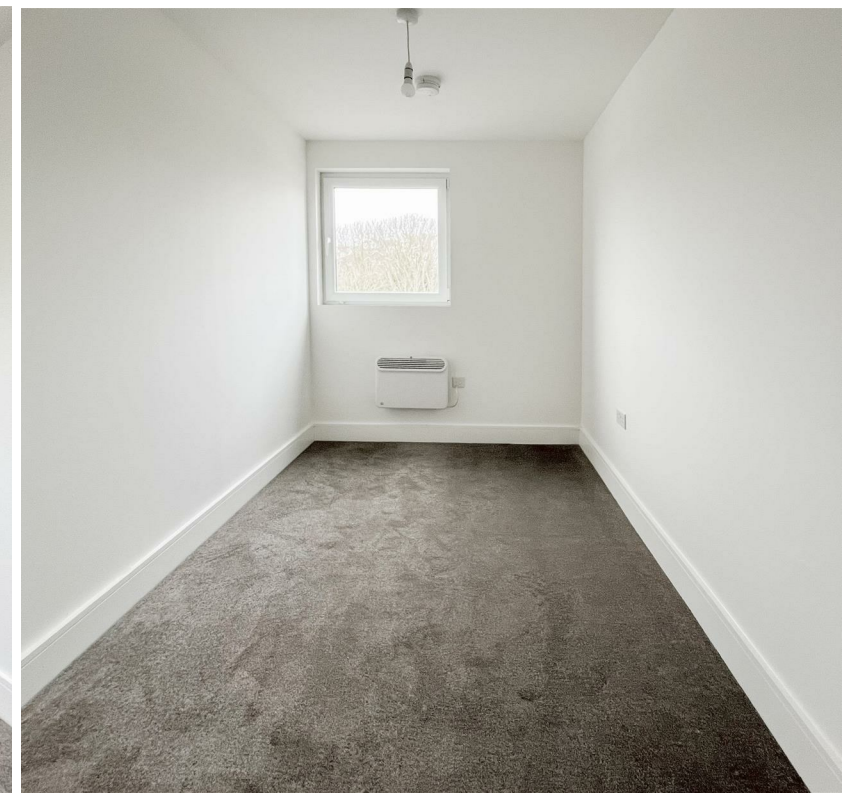
## Flat 82, 6 Martin Court, Hastings, TN34 1EF

This stylish second-floor two-bedroom apartment forms part of the brand-new Station Plaza development, right in the centre of Hastings. With Hastings Train Station on the doorstep, the seafront only a few minutes' walk away and Alexandra Park close by, the location offers the perfect mix of town and coastal living.

Inside, the property feels light and modern, with an open-plan living space designed for today's lifestyles. The kitchen is fitted with quality appliances including a fridge freezer, washer dryer, integrated dishwasher, oven and hob. From the living area, double patio doors provide direct access outside, where the space could be used as a patio, giving you the chance to enjoy some fresh air just steps from your sofa.

Both bedrooms are generous doubles, while the bathroom is finished in a sleek contemporary style with a shower over the bath. The apartment has been completed to a high standard with modern electric heating throughout, and secure entry intercom for peace of mind.

Station Plaza combines modern design with an unbeatable location, making this apartment an excellent choice for professionals, couples or small families looking for convenience and comfort in Hastings.







Station Plaza has been designed with residents' lifestyles in mind. The development is pet-friendly and includes digital on-site parcel lockers to ensure deliveries are safe and convenient. Security and peace of mind are a priority with secure gated entry, and a private underground car park where each flat can benefit from an allocated space for just £25 per month, in addition to secure bike storage.

Residents will also enjoy access to a range of exclusive on-site amenities, including a 24/7 gym, and a cinema room.

More information on Station Plaza and what this sought after new development offers can be found on their website <https://www.stationplazahastings.co.uk/>

#### **Living Room / Kitchen**

total floor area - 87'7" m sq (total floor area - 26.7 m sq)

#### **Bedroom One**

total floor area - 38'0" m sq (total floor area - 11.6 m sq)

#### **Bedroom Two**

total floor area - 26'2" m m sq (total floor area - 8.0 m m sq)

#### **Bathroom**

total floor area - 14'1" m m sq (total floor area - 4.3 m m sq)

#### **Storage**

total floor area - 7'10" m sq (total floor area - 2.4 m sq)

#### **Balcony**

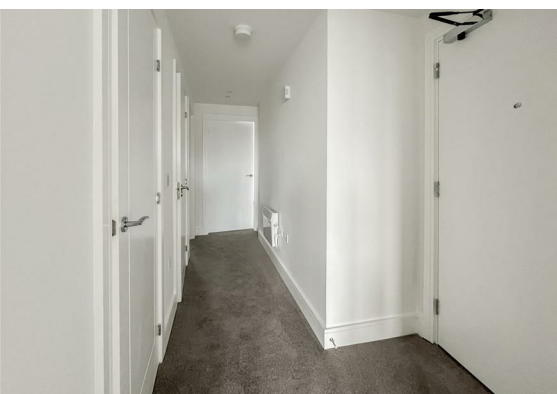
14'1" m sq (4.3 m sq)

#### **Total floor area: 63.3 m sq**

#### **Council Tax Band to be confirmed**

#### **Please note**

The show flat photographs, computer-generated images (CGIs), and illustrations are provided for illustrative purposes only. They are intended to give a general impression of the development and may include features, finishes, furnishings, and fittings that do not form part of the standard specification. Actual layouts, dimensions, materials, and finishes may vary. All information is subject to change without notice and does not constitute a contract, representation, warranty, or guarantee.



Floor Plan

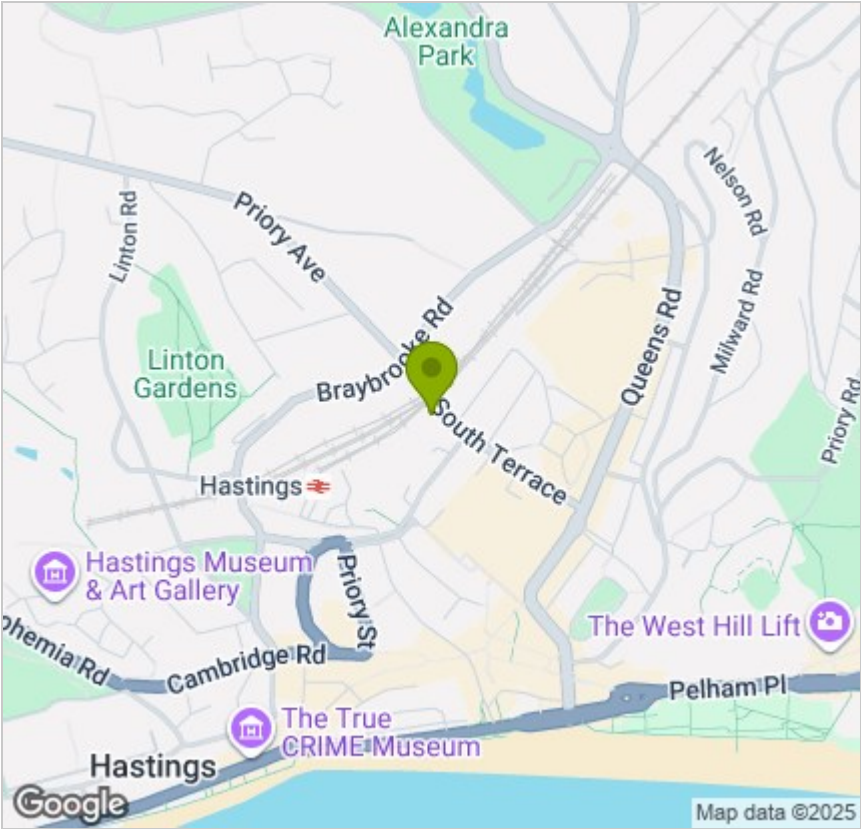


Viewing

Please contact us on 01424 446644 if you wish to arrange a viewing appointment for this property or require further information.

These particulars, whilst believed to be accurate are set out as a general outline only for guidance and do not constitute any part of an offer or contract. Intending purchasers should not rely on them as statements of representation of fact, but must satisfy themselves by inspection or otherwise as to their accuracy. No person in this firms employment has the authority to make or give any representation or warranty in respect of the property.

Area Map



Energy Efficiency Graph

