

# BRENNAN

## BESPOKE



**£235,000**

**Barth Close**

Great Oakley, NN18 8LU

## PROPERTY SUMMARY

Situated in a sought-after residential area of Great Oakley, this beautifully presented detached home offers flexible living space and a fantastic rear garden, perfect for families and those looking to upsize. The ground floor welcomes you with a bright entrance hall leading to a stylish kitchen and a spacious living room overlooking the rear garden. There's also a convenient downstairs WC and internal access to the garage, providing excellent storage or potential for conversion. Upstairs, you'll find three well-proportioned bedrooms, all served by a contemporary shower room. The main bedroom benefits from fitted wardrobes, while the additional bedrooms offer plenty of space for family or guests. Outside, the property boasts a large, enclosed rear garden with both patio and lawned areas—ideal for outdoor entertaining or relaxing in the sunshine. The front of the home offers a neat garden, driveway parking and a single garage. Great Oakley is a popular village with a friendly community feel, offering local amenities, excellent transport links and easy access to Corby and surrounding countryside.

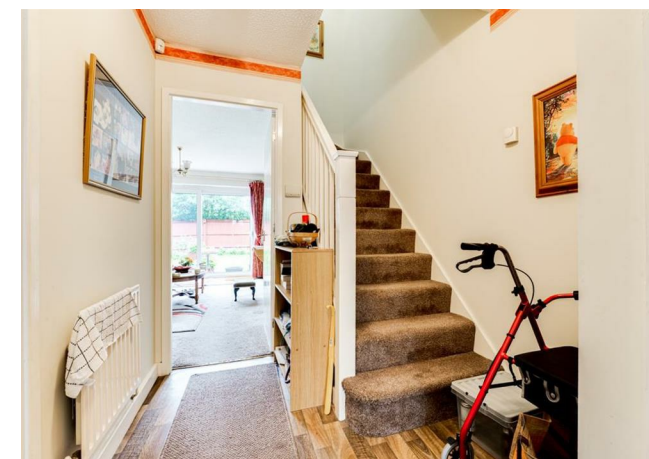
3



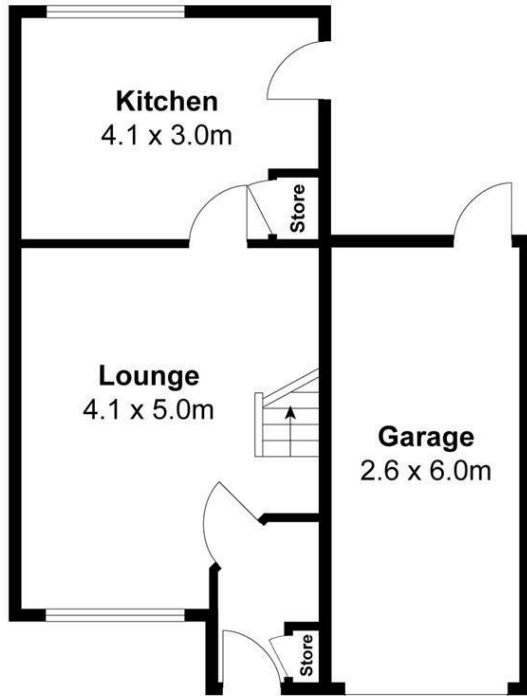
1



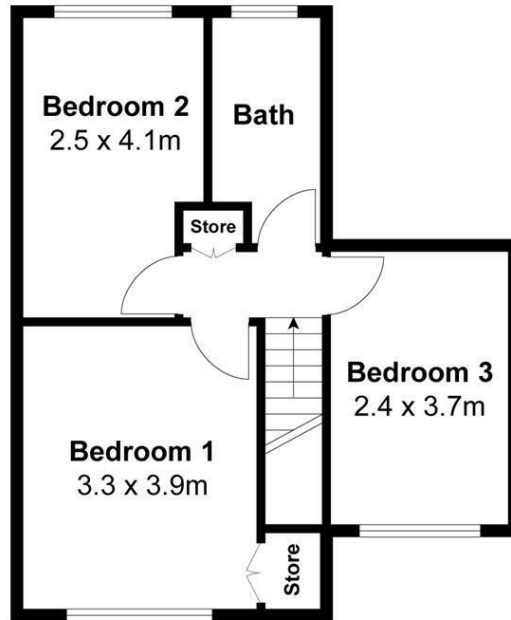
1







**Ground Floor**



**First Floor**

For identification only not to scale

**BRENNAN**  
BESPOKE

**OFFICE ADDRESS**  
BRENNAN BESPOKE  
2 The Tithe Barn Glendon Lodge Farm  
Glendon  
Kettering  
Northamptonshire  
NN14 1QF

**OFFICE DETAILS**  
01536 904400  
info@brennanbespoke.co.uk  
<https://www.brennanbespoke.co.uk>

**BRENNAN**  
BESPOKE

**LOCAL AUTHORITY**  
North Northamptonshire

**TENURE**  
Freehold

**COUNCIL TAX BAND**  
C

**VIEWINGS**  
By prior appointment only

Energy Efficiency Rating		Current	Potential
<i>Very energy efficient - lower running costs</i>			
(92 plus) A			
(81-91) B			
(69-80) C		72	77
(55-68) D			
(39-54) E			
(21-38) F			
(1-20) G			
<i>Not energy efficient - higher running costs</i>			
<b>England &amp; Wales</b>		EU Directive 2002/91/EC	

Agents Note: Whilst every care has been taken to prepare these particulars, they are for guidance purposes only. All measurements are approximate and are for general guidance purposes only and whilst every care has been taken to ensure their accuracy, they should not be relied upon and potential buyers/tenants are advised to recheck the measurements