

Southoe Mill Street

Harlow, Essex

Guide Price £675,000

A superb three bedroom home nestled on the outskirts of Harlow, Epping and Hastingwood. An absolute gem, here find plenty of space to love for years to come.

Council Tax band: E

Tenure: Freehold

- Ground Floor Bedroom & Shower Room
- Driveway & Garage
- Utility Room
- Garden Room
- Spacious Garden
- Short drive to M11



Hallway

Living Room

18' 1" x 13' 3" (5.50m x 4.04m)

Kitchen

12' 8" x 12' 0" (3.85m x 3.65m)

Dining Room

12' 0" x 10' 2" (3.65m x 3.11m)

Utility Room

9' 4" x 5' 5" (2.84m x 1.64m)

Bedroom 3

10' 11" x 10' 10" (3.34m x 3.30m)

Shower Room

8' 10" x 5' 7" (2.69m x 1.69m)

Bedroom 1

15' 5" x 14' 4" (4.71m x 4.36m)

Bedroom 2

15' 7" x 10' 11" (4.75m x 3.32m)

Bathroom

12' 0" x 6' 9" (3.65m x 2.06m)

Internal Garage

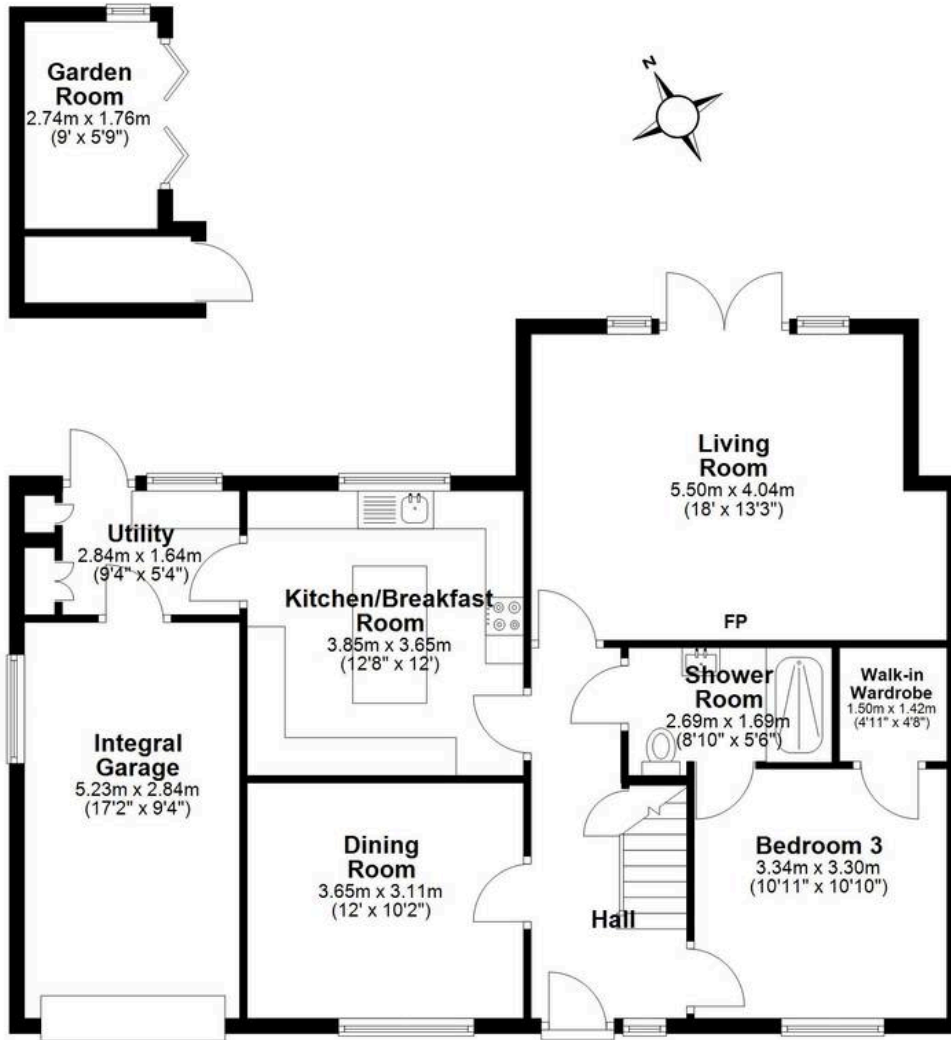
17' 2" x 9' 4" (5.23m x 2.84m)





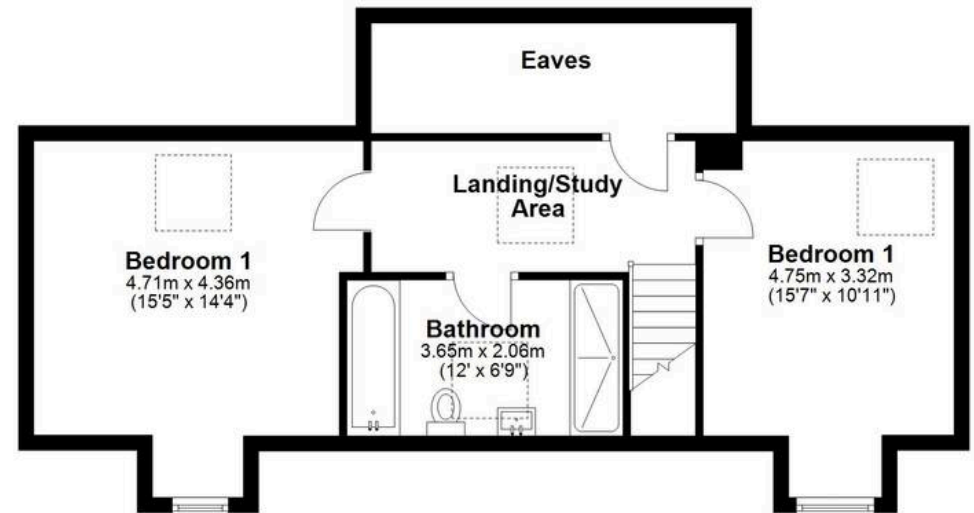
Ground Floor

Approx. 102.4 sq. metres (1102.3 sq. feet)



First Floor

Approx. 56.9 sq. metres (612.2 sq. feet)



Total area: approx. 159.3 sq. metres (1714.5 sq. feet)