



Reservoir Road, SE4

£675,000

Located on the peaceful and picturesque Reservoir Road in SE4, just moments from the green open spaces of Telegraph Hill Park, this beautifully presented two-bedroom garden flat offers over 1,100 sq ft of thoughtfully designed living space and a large private garden-a rare find in this sought-after neighbourhood.

The flat is ideally situated within easy reach of Nunhead and Brockley stations, offering fast links into London Bridge, Blackfriars and Shoreditch. You're also moments from Telegraph Hill Park, local artisan cafes, shops, and excellent schools.

Features

- Victorian Conversion
- Two Bedroom Garden Flat
- Large Extension
- Telegraph Hill Conservation Area
- Excellent Transport Links
- Cellar

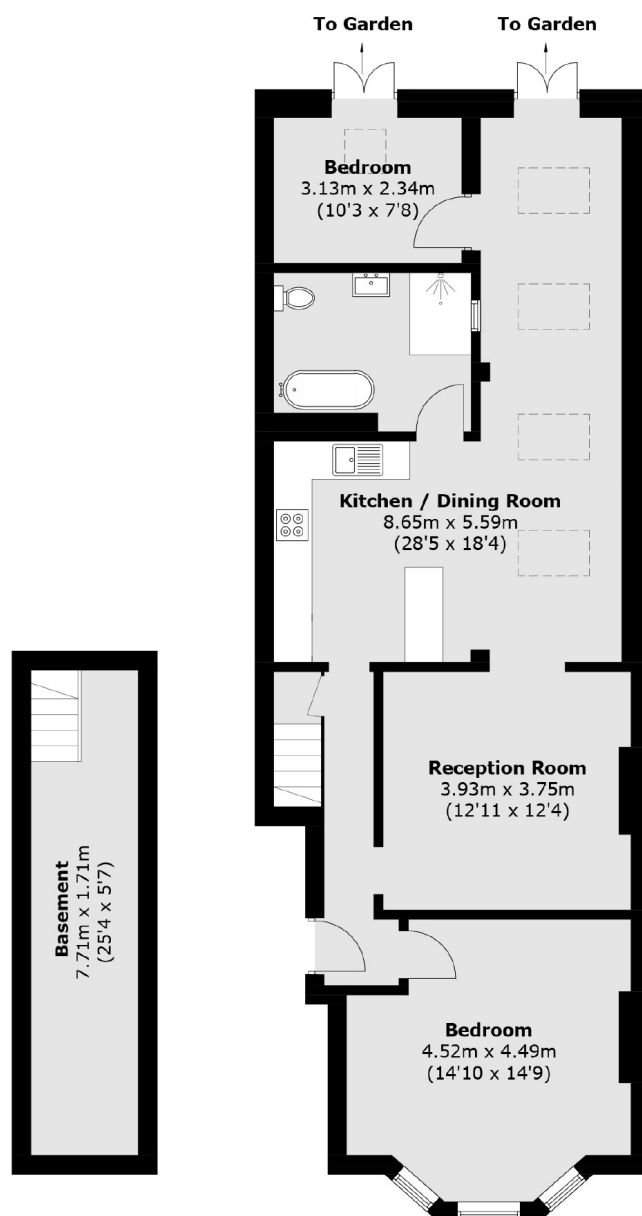


Reservoir Road, SE4

This extended ground-floor flat occupies the lower level of a handsome period building and has been finished to a high standard throughout, offering a perfect blend of character and contemporary style. The open-plan kitchen/living space is ideal for entertaining or relaxing, with large windows and doors opening directly onto the garden-creating a true indoor-outdoor living experience.



Reservoir Road, London, SE4



Basement

Ground Floor

Total area (approx.): 102.4 sq. m (1,102.2 sq. ft)
(Including Basement)