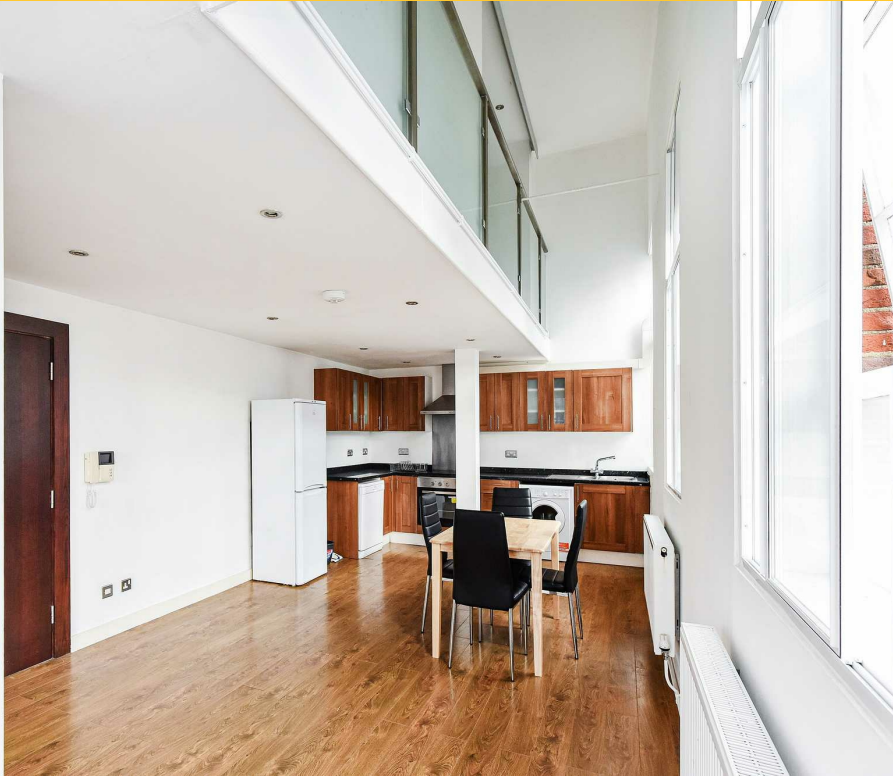


Format House (2), Imperial Road, Fulham, London, SW6 2AG



Flat to Rent
2 Bedrooms
£600 pw

Contact:

Residential Lettings

020 7843 9180

Description

Spacious two-bedroom flat to rent in Fulham.

Set within a beautifully converted period warehouse, this impressive split-level mezzanine apartment offers character, space, and contemporary living in equal measure.

Occupying the first floor, the property features two generous double bedrooms, each benefiting from its own en-suite bathroom. The heart of the home is the stunning dual-aspect open-plan kitchen and reception room, where soaring ceilings, expansive windows, and abundant natural light create a bright and inviting living space. Stylish wooden flooring runs throughout, complemented by a convenient guest WC.

- Available Immediately
- Entry Phone System
- Walking Distance From Tube Station
- Wooden Floors

Your Notes

Format House (2), Imperial Road, Fulham, London, SW6 2AG



The unique split-level design adds to the apartment's sense of space and individuality, with both bedrooms positioned on the mezzanine level overlooking the main living area below.

Ideally located just moments from the vibrant New Kings Road, residents can enjoy an excellent selection of boutiques, cafés, restaurants, and bars right on their doorstep. Chelsea Harbour and the renowned Chelsea Design Centre are within a short 10-minute walk, while Fulham Broadway, Parsons Green (District Line), and Imperial Wharf Overground stations provide superb transport links across London.

Please note that there is no parking with the property. All residents must apply for parking via the council or source their own parking privately at an additional cost.

There are no bills included in the rent.

Format House (2), Imperial Road, Fulham, London, SW6 2AG