



20 Denfield Avenue, Cardenden - KY5 0DD

Lochgelly

Offers Over £125,000





## 20 Denfield Avenue

Cardenden, Lochgelly

New for sale a stunning Semi-Detached Villa featuring large double driveway, generous enclosed garden with summerhouse with upgrades by the present owner.

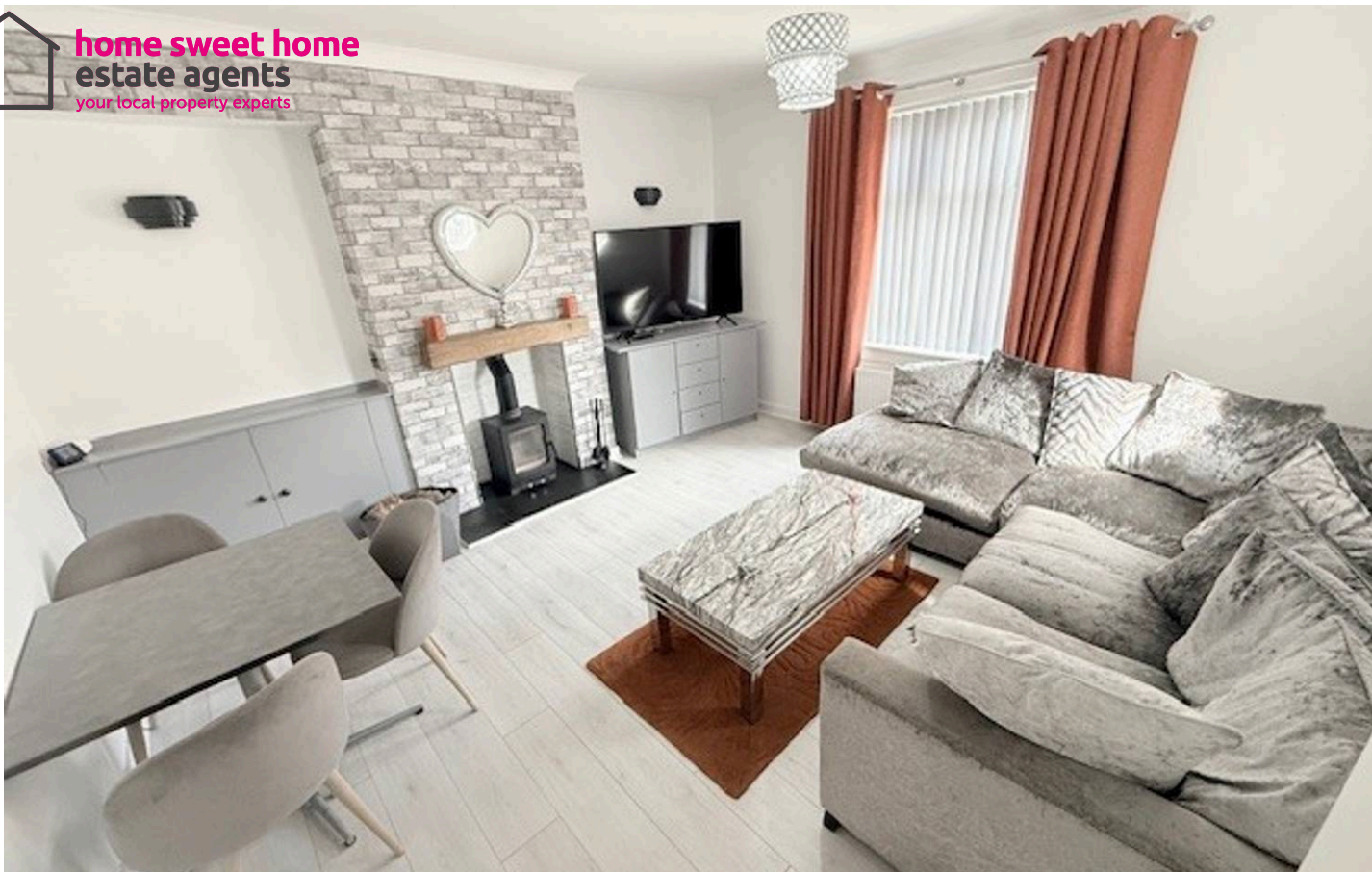
Council Tax band: A

Tenure: Freehold

EPC Energy Efficiency Rating: D

EPC Environmental Impact Rating: D

- STUNNING SEMI DETACHED VILLA
- EXTENDED DOUBLE DRIVEWAY
- LOUNGE/ DINER WITH WOOD BURNER
- MODERN FITTED KITCHEN
- TWO GENEROUS DOUBLE BEDROOMS
- DG- GCH - EPC D - HOME REPROT £125,000
- LARGE PRIVATE GARDEN WITH SUMMERHOUSE
- NEW BATHROOM/WC
- VIEWING HIGHLY RECOMMENDED
- SUPERB STARTER HOME



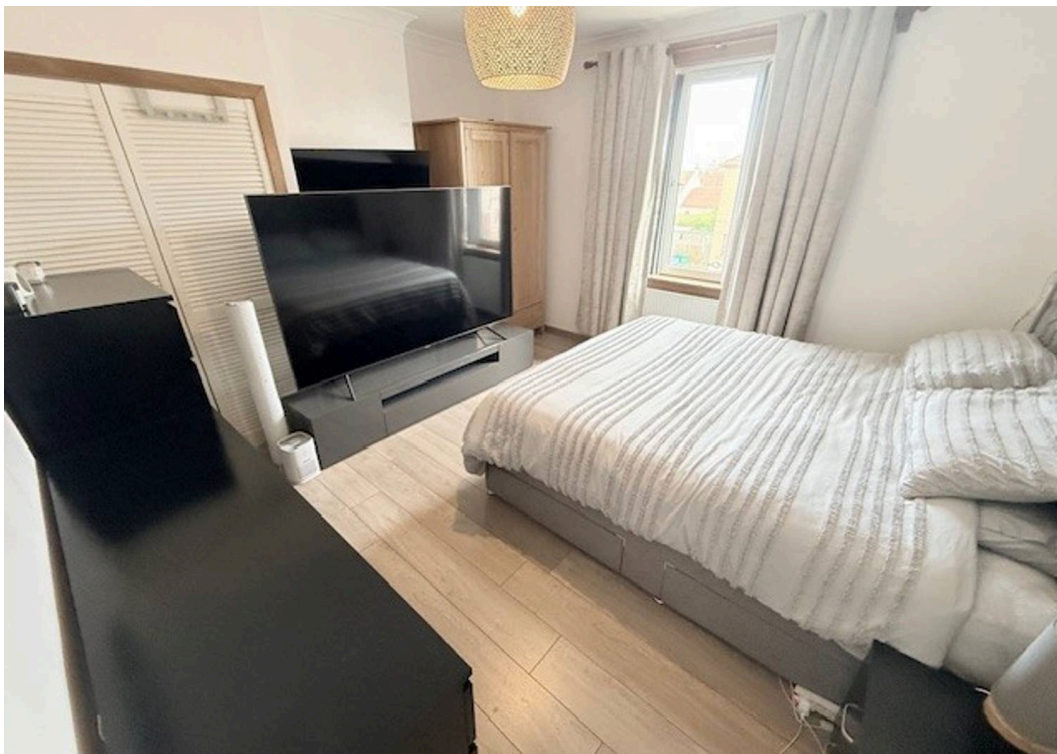
**GARDEN**

**DRIVEWAY**

4 Parking Spaces

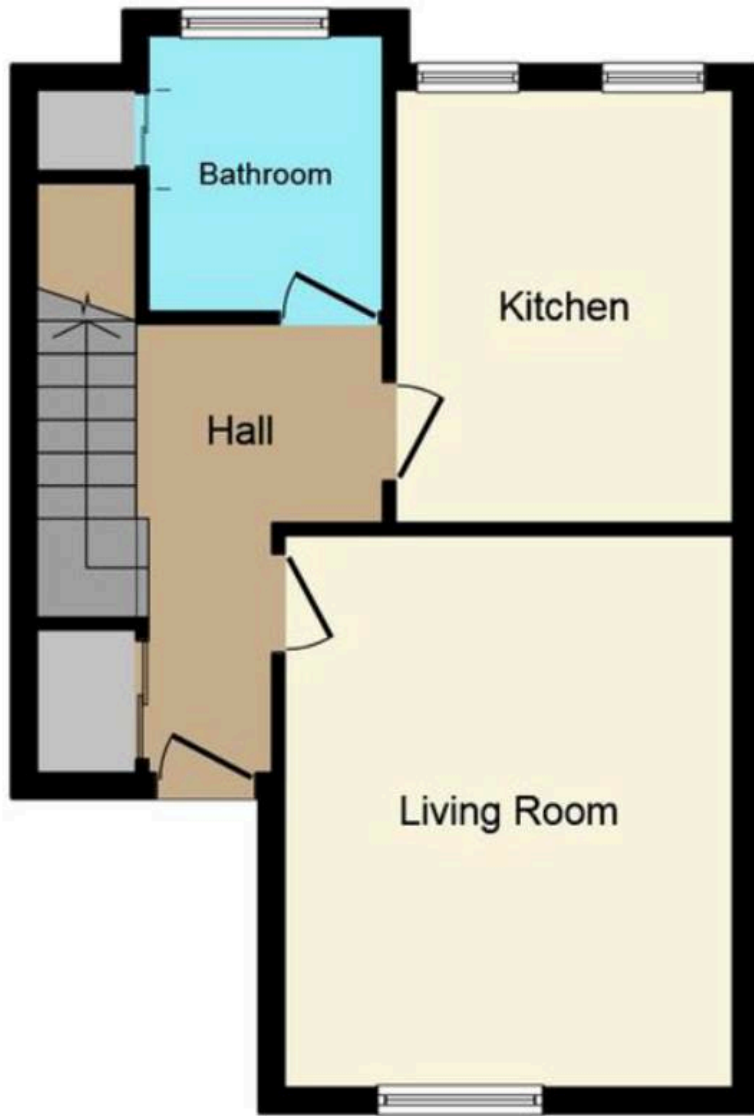
Extended double driveway.





Energy Efficiency Rating		Current	Potential
<i>Very energy efficient - lower running costs</i>			
(92+)	<b>A</b>		
(81-91)	<b>B</b>		
(69-80)	<b>C</b>		
(55-68)	<b>D</b>	<b>66</b>	<b>77</b>
(39-54)	<b>E</b>		
(21-38)	<b>F</b>		
(1-20)	<b>G</b>		
<i>Not energy efficient - higher running costs</i>			
<b>England, Scotland &amp; Wales</b>		EU Directive 2002/91/EC	

Environmental Impact (CO <sub>2</sub> ) Rating		Current	Potential
<i>Very environmentally friendly - lower CO<sub>2</sub> emissions</i>			
(92+)	<b>A</b>		
(81-91)	<b>B</b>		
(69-80)	<b>C</b>		
(55-68)	<b>D</b>	<b>66</b>	<b>76</b>
(39-54)	<b>E</b>		
(21-38)	<b>F</b>		
(1-20)	<b>G</b>		
<i>Not environmentally friendly - higher CO<sub>2</sub> emissions</i>			
<b>England, Scotland &amp; Wales</b>		EU Directive 2002/91/EC	



**Ground Floor**



**First Floor**

This plan is for illustration purposes only and may not be representative of the property. Plan not to scale.



**home sweet home**  
estate agents  
your local property experts