



Cripple Street, Maidstone, ME15 6DW
Offers In Excess Of £250,000



++A GRAND FIRST FLOOR APARTMENT IN A GRADE II LISTED MANOR HOUSE++

Living at The Manor is a unique experience that begins with the approach along its private drive. Passing through the classic portico, you enter a partly panelled hall which leads to the magnificent staircase – a fitting introduction to this elegant period home.

The apartment itself retains the same refined character, with exposed timbers and a striking panelled Drawing Room. There is a well-fitted kitchen and a luxury bathroom. At present, the property is arranged as one bedroom with the second bedroom used as a study/dressing room, offering flexibility to suit your lifestyle.

Residents enjoy access to the extensive communal gardens without the responsibility of upkeep, together with the charming thatched-roof Summer House. Parking is available in the front gardens of The Manor, and the property also benefits from a single garage in a nearby block. The leaseholders benefit from an adjoining 30 acre conservation area which is accessed via a padlocked gate.

The Manor is set in the heart of Loose, one of Maidstone's most sought-after villages. Known for its conservation area and picturesque countryside walks through the Loose Valley, the village also offers a selection of local shops, pubs and a primary school. Maidstone town centre is only a short drive away, providing comprehensive shopping, schooling and transport links, including mainline rail services to London from Maidstone East, West and Staplehurst stations.



Entrance Hall

Entrance Lobby

FIRST FLOOR

Lounge 24'0" x 21'4" (7.34m x 6.51m)

Kitchen 20'5" x 7'3" (6.24m x 2.23m)

Bedroom 16'8" x 11'4" (5.09m x 3.46m)

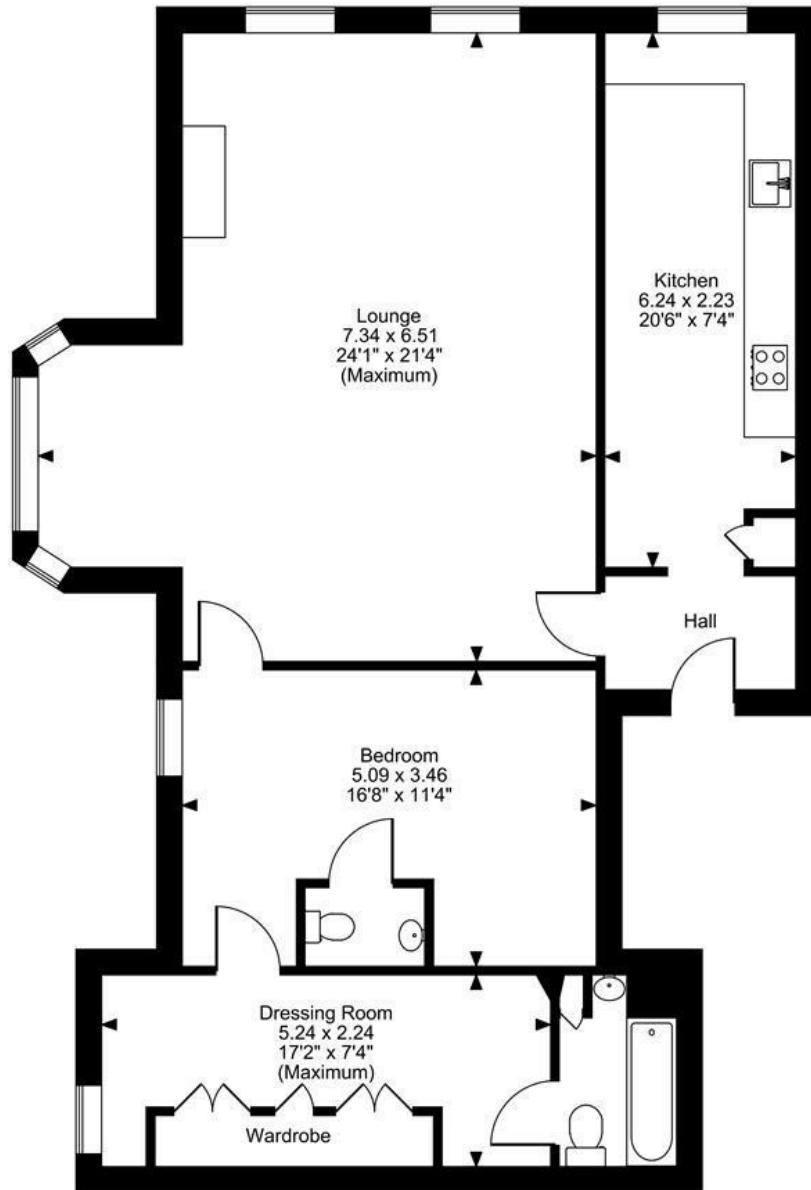
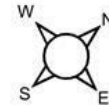
Dressing Room 17'2" x 7'4" (5.24m x 2.24m)

Bathroom

EPC Exempt

Page & Wells limited for themselves and for the vendors of this property whose agents they are give notice that: 1. These particulars do not constitute any part of, an offer or a contract. 2. All statements contained in these particulars as to this property are made without responsibility on the part of Page & Wells Limited or the Vendor. 3. None of the statements contained in these particulars as to the property is to be relied on as statements or representations of fact. 4. Any intending purchaser must satisfy himself by inspection or otherwise as to the correctness of each of the statements contained in these particulars. 5. The vendor does not make or give, and neither Page & Wells Limited nor any person in their employment has any authority to make or give any representation whatsoever in relation to this property. These particulars are supplied on the understanding that all negotiations are carried out throughout Page & Wells Limited. Properties with a reference prefixes EAA are those which Page & Wells Limited disclose an interest in accordance with the provisions of the Estates Agents Act 1979

The Manor, Hayle Place, Cripple Street, Maidstone, Kent
Approximate Gross Internal Area
969 Sq Ft/90 Sq M



First Floor

FOR ILLUSTRATIVE PURPOSES ONLY - NOT TO SCALE

The position & size of doors, windows, appliances and other features are approximate only.

© ehouse. Unauthorised reproduction prohibited. Drawing ref. dig/8663236/TOW

