

21 Midhurst Drive Hednesford, Cannock, WS12 4RF

Tucked away at the very end of a highly desirable cul-de-sac, this beautifully extended three-bedroom detached family home offers the perfect blend of privacy and contemporary living. The team at Aode is delighted to present a property that boasts enviable, uninterrupted views over open fields to both the front and side. This home represents a rare opportunity to secure a peaceful semi-rural feel while remaining close to excellent local amenities.

Early viewing is highly recommended to appreciate the sheer scale and stunning position on offer.

£295,000

21 Midhurst Drive

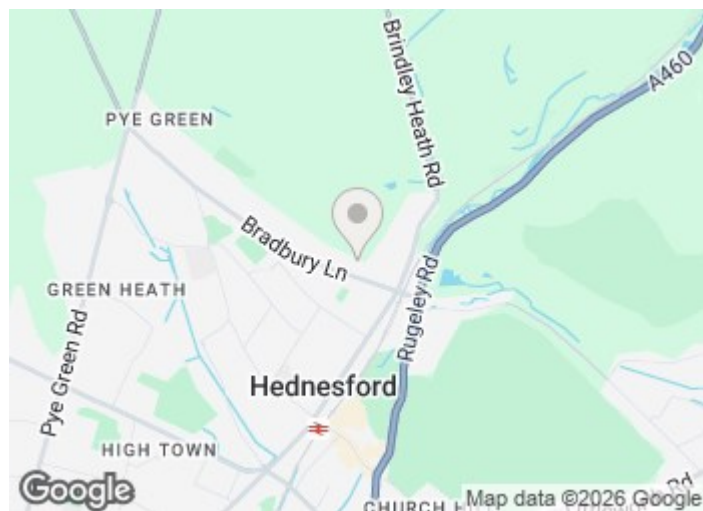
Hednesford, Cannock, WS12 4RF



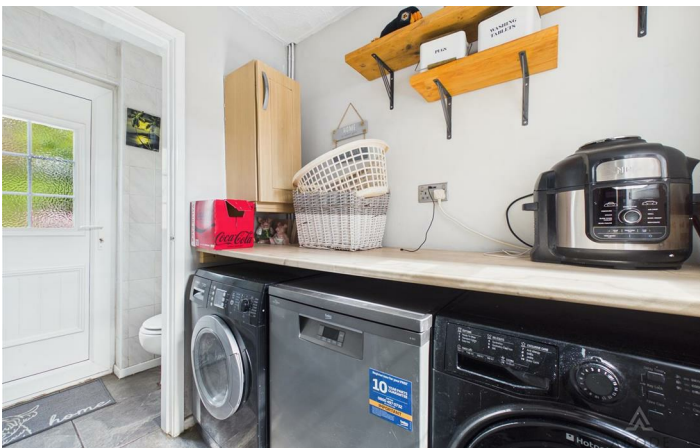
Ground Floor

First Floor

Outside



Directions



Floor Plan

These particulars, whilst believed to be accurate are set out as a general outline only for guidance and do not constitute any part of an offer or contract. Intending purchasers should not rely on them as statements of representation of fact, but must satisfy themselves by inspection or otherwise as to their accuracy. No person in this firm's employment has the authority to make or give any representation or warranty in respect of the property.

Racecourse Chambers Town Meadow Way, Uttoxeter, Staffordshire, ST14 8EW
 Tel: 01889 567777 Email: uttoxeter@abodemidlands.co.uk <https://www.abodemidlands.co.uk>

