



## Courtfield Road, SW7

£525 Per week

A well-situated third floor, one bedroom apartment offering an excellent view, set within an Edwardian mansion block on Courtfield Road, only a short walk from Gloucester Road.

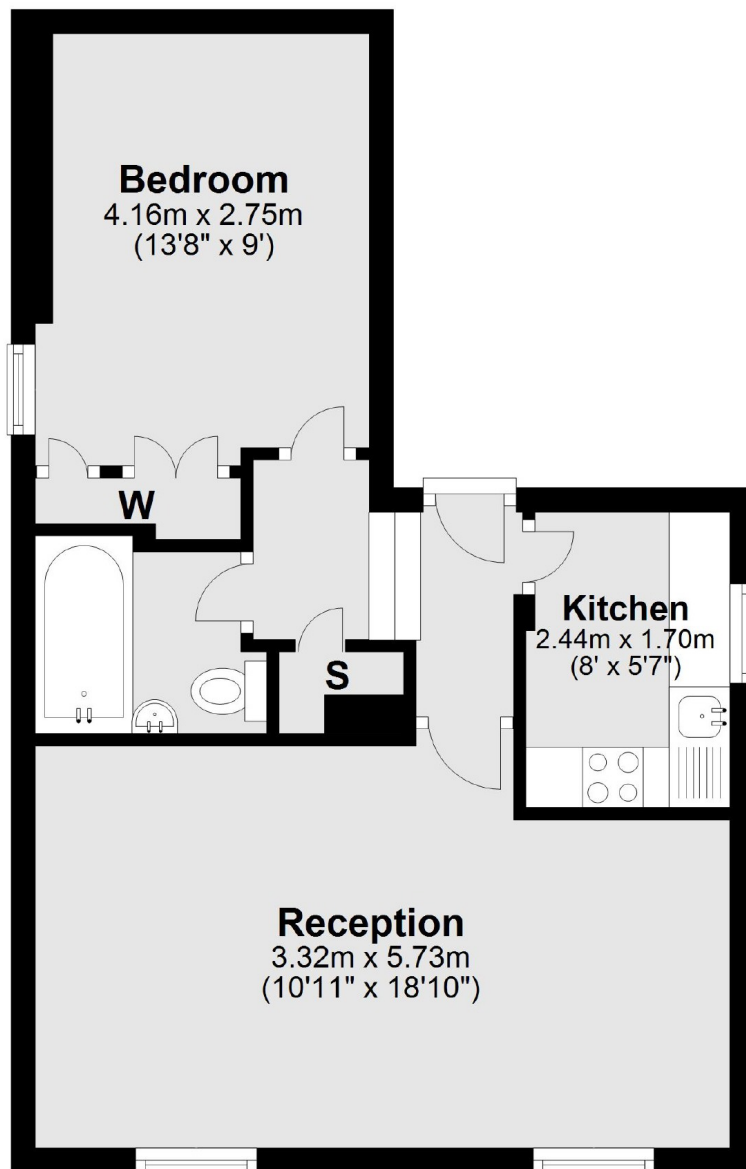
The property is ideally situated just a few minutes' walk from Gloucester Road Station, with convenient access to nearby shops, including Waitrose and Sainsbury's.

### Features

- Newly Re-Painted
- Wooden Floors
- Large Double Bedroom
- Separate Kitchen
- Excellent Location
- Good Storage

# Courtfield Road, London, SW7

## Third Floor



Total area: approx. 41.0 sq. metres (441.8 sq. feet)