

SNELLERS

ESTATE AGENTS



Regency Close, TW12

£499,950

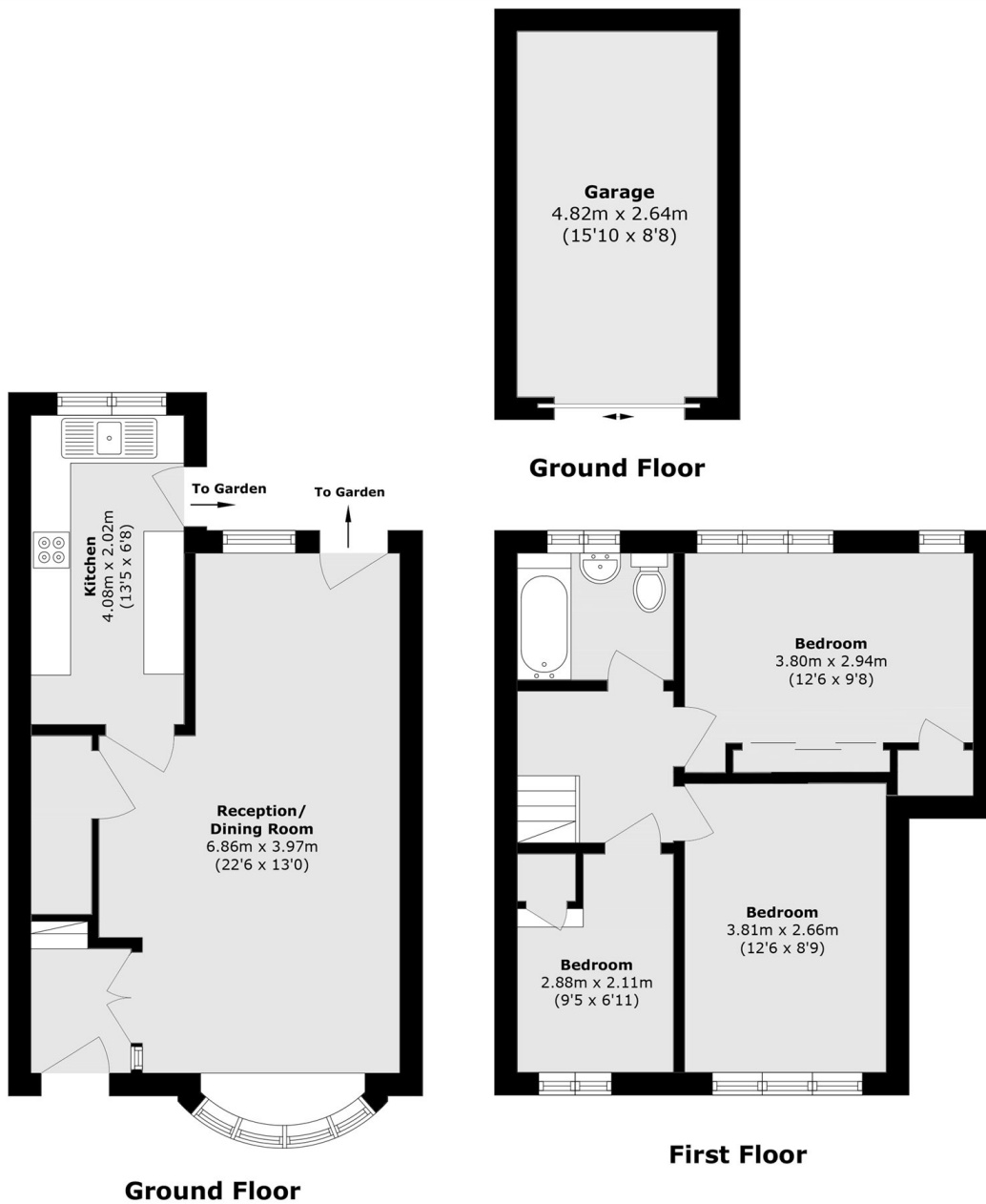
Offers in excess of £500,000. Brought to the market for the first time in 31 years and situated in this quiet cul-de-sac is this three bedroom family home offering scope to extend (STPP), a private garden, a garage and no onward chain.

Regency Close is a quiet cul-de-sac ideally located for a number of schools and the recreational amenities of Hampton Common. The property is conveniently positioned for a local Sainsbury's Superstore, Hampton Station, Hampton Pool and Royal Bushy Park.

- Three Bedrooms • Scope to Extend (STPP) • Quiet Cul-De-Sac •
- Private Garden • Garage • No Chain •

SNELLERS

ESTATE AGENTS



Total area (approx.): 75.3 sq. m (810.5 sq. ft)
Garage area (approx.): 12.7 sq. m (136.7 sq. ft)

Snellers Hampton Hill Sales
197-201 High Street
Hampton Hill
TW12 1NL
020 8783 0083
hamptonsales@snellers.co.uk

Energy Rating: D We aim to make our particulars both accurate and reliable. However they are not guaranteed; nor do they form part of an offer or contract. If you require clarification on any points then please contact us, especially if you're traveling some distance to view. Please note that appliances and heating systems have not been tested and therefore no warranties can be given as to their good working order