



19 CHILTERN ROAD
HITCHIN

19 Chiltern Road

Hitchin

SG4 9PJ

Guide Price £1,500,000

VIEWINGS TO COMMENCE SATURDAY 4th
JULY 2026 - FULL DETAILS AVAILABLE
SHORTLY, PLEASE PHONE TO ARRANGE
YOUR VIEWING SLOT!!

A very special home located in one of Hitchin's most exclusive locations ideal for station access and sought after schools.

The tree lined setting is stunning, with neighbouring properties of a similar era, this area is also protected conservation area.

This 4 bedroom home has been sympathetically extended at the rear, now providing three generous reception rooms. Many note worthy character features including the intricate entrance door.

Established rear garden.

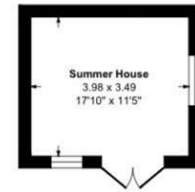
Viewing

By appointment with Norgans Estate Agents.

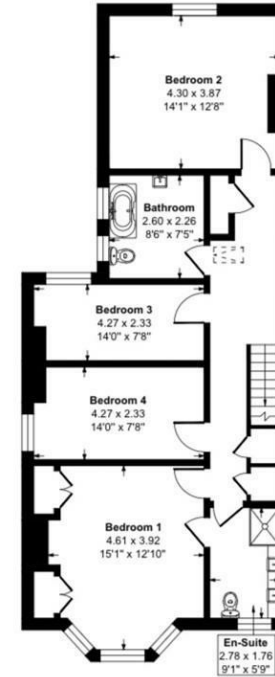
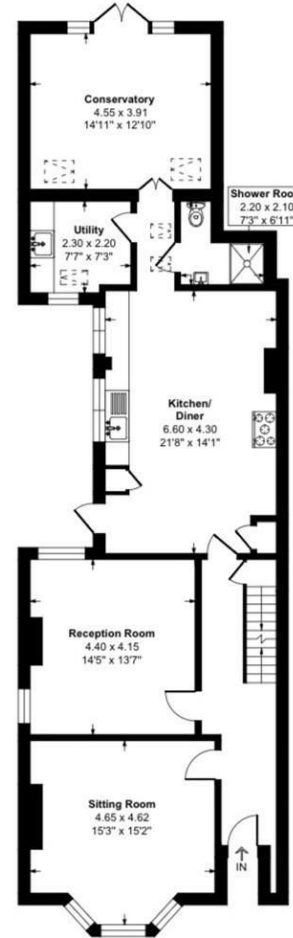
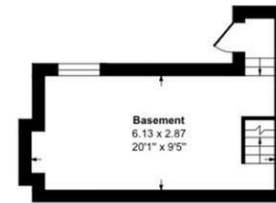
Ground Floor
Approx. 111.9 sq. metres (1204.9 sq. feet)

First Floor
Approx. 82.5 sq. metres (888.1 sq. feet)

Summer House
Approx. 13.8 sq. metres (149.4 sq. feet)



Basement
Approx. 18.0 sq. metres (194.4 sq. feet)



Total area: approx. 226.4 sq. metres (2437.0 sq. feet)



8 Brand Street, Hitchin, Herts,
SG5 1HX

t: 01462 455225
hitchin@norgans.co.uk
www.norgans.co.uk