
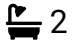



Welham Croft, Shirley, Solihull, B90 4UU

From £700,000

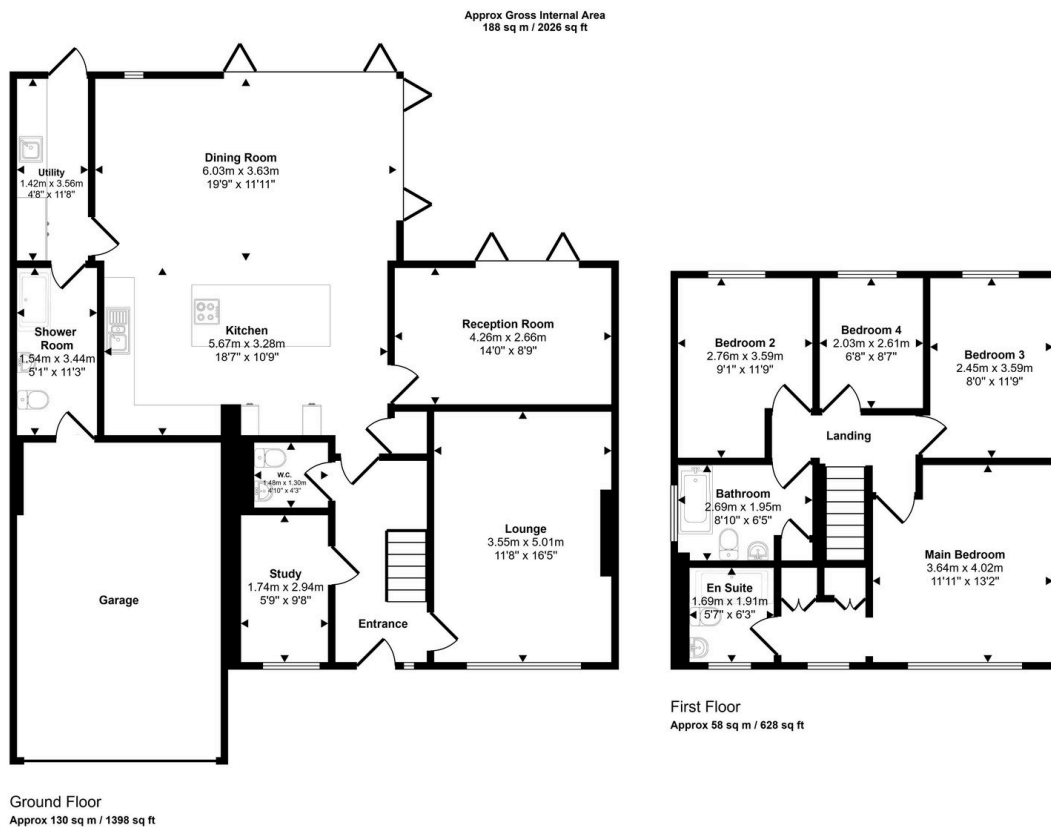
 4  2  4



Extended & Fully Refurbished 4 Bed Detached | 3 Bathrooms | Open Plan Kitchen/Diner | Large Garden | Garage | Chain Free | Solihull Location

Key Features

- Chain free – ready for immediate purchase
- Fully refurbished and modernised throughout
- Four well-proportioned bedrooms
- Three bathrooms (family bathroom, en-suite & ground floor shower room)
- Impressive extended open-plan kitchen/dining/day room
- Additional reception room plus separate study/home office
- Separate utility room for added practicality
- Larger-than-average integral garage
- Private, generous rear garden with patio area
- Large driveway providing ample off-road parking



This floorplan is only for illustrative purposes and is not to scale. Measurements of rooms, doors, windows, and any items are approximate and no responsibility is taken for any error, omission or mis-statement. Icons of items such as bathroom suites are representations only and may not look like the real items. Made with Made Snappy 360.