

STANLEY
PROPERTY.LONDON

020 7352 9556
stanleypropertylondon.co.uk



Cheyne Row, SW3

Asking Price £675,000

EPC: D

Gross Approx. Internal Area

665.00 sq ft

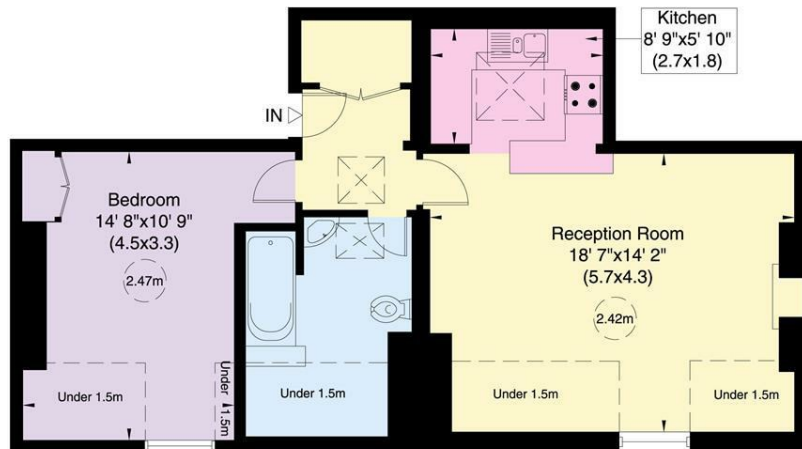
Cheyne Row, SW3

Approximate Gross Internal Area

62 sq m/ 665 sq ft Including Under 1.5m

51 sq m/ 548 sq ft Excluding Under 1.5m

Not to Scale, for identification only



Top Floor

For guidance only and must not be relied upon as a statement of fact or used for valuation purposes.
All measurements and areas are approximate only (and have been prepared in accordance with the current edition of the RICS Code of Measuring Practice).





£675,000

Leasehold - Share of Freehold

- Tenure - Leasehold plus Share of Freehold
- Lease Remaining - 978 Years Remaining
- Council Tax (RBKC) - Band F
- EPC Rating - D
- Service Charge - £3,540.22 p.a.
- 3rd Floor (no lift)



STANLEY
PROPERTY.LONDON