



Coach Well Gardens, Barton-upon-Humber, North Lincolnshire

 3  1  1

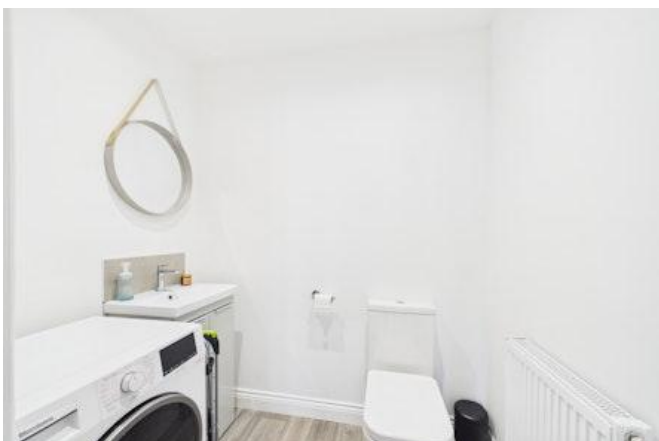
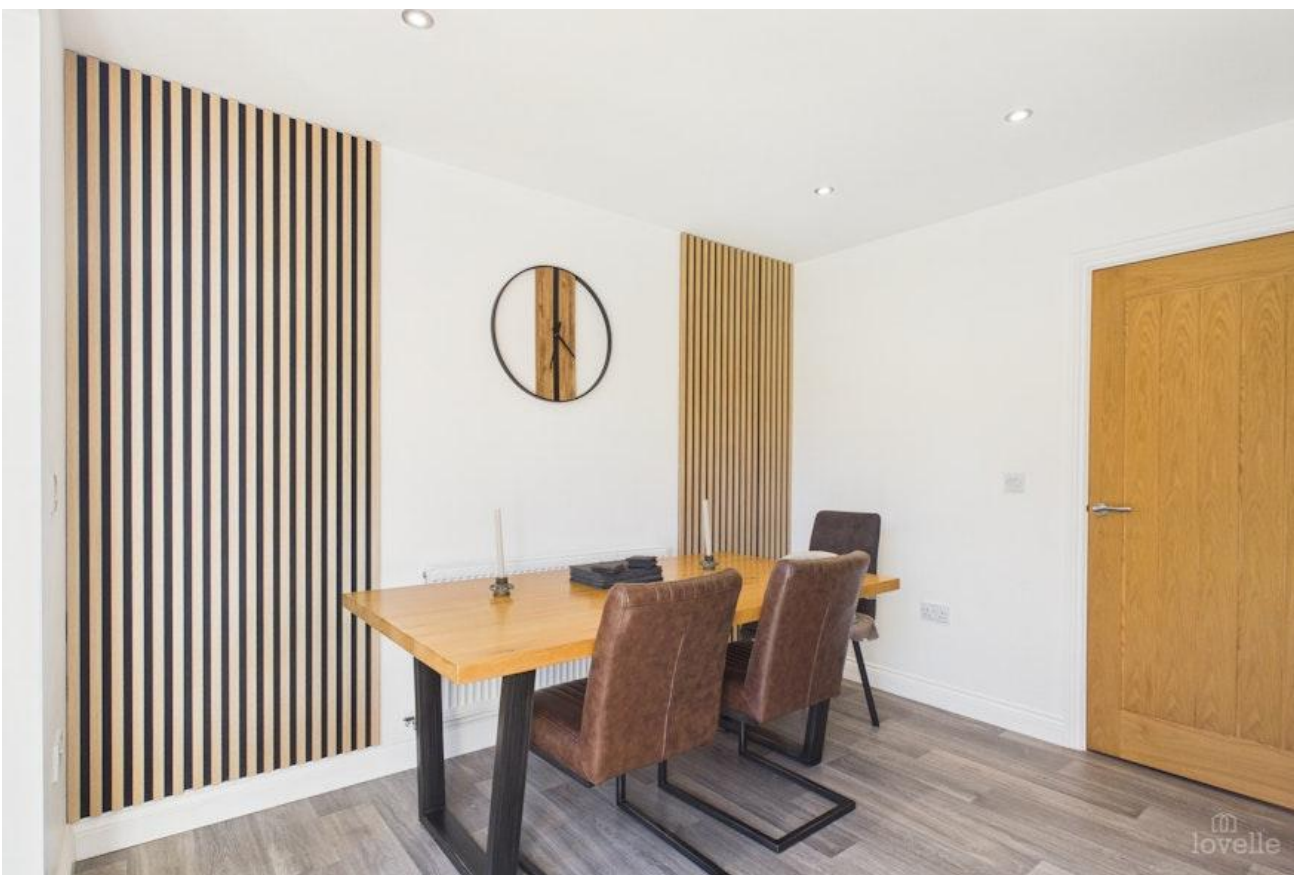
£210,000


lovelle



Key Features

- Total Floor Area:- 85 Square Metres
- Kitchen Diner
- Spacious Lounge
- Family Bathroom
- Three Bedrooms
- Fitted Wardrobes
- Driveway
- Log Burner
- Enclosed Rear Garden
- EPC rating B





DESCRIPTION

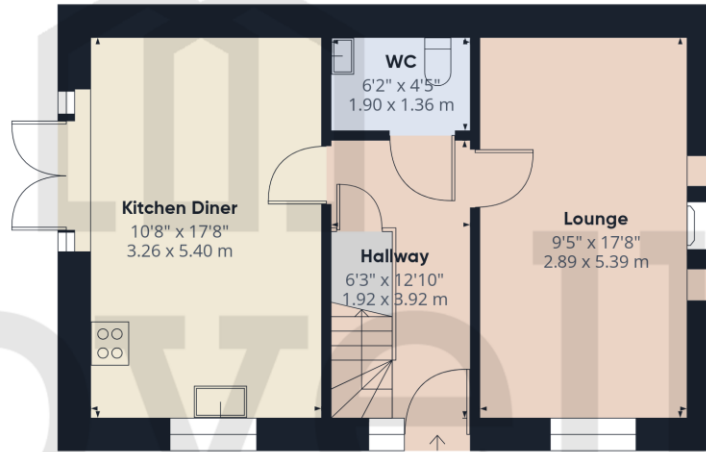
This well-appointed semi-detached house comprises three bedrooms, providing ample space for family living, guest accommodation, or home working. The spacious lounge is a notable highlight, featuring a log burner that creates an inviting focal point for relaxation or entertaining. The family kitchen is designed with practicality and daily routines in mind, with enough space for dining and food preparation. The property includes a family bathroom, tastefully fitted to a modern standard.

Externally, the enclosed rear garden provides a lovely setting for outdoor activities, gardening, or al fresco dining. Finished with a driveway to the front of the house allowing for convenient off-road parking.

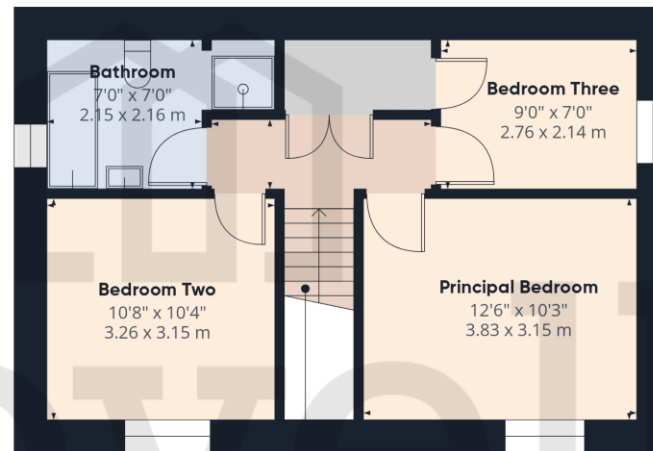
Call us to arrange your viewing today!



FLOORPLAN



Ground Floor



Floor 1



Coach Well Gardens, Barton-upon-Humber, North Lincolnshire

TENURE

The Tenure of this property is Freehold.

COUNCIL TAX

Band C

VIEWING

By appointment with the Sole Agent Lovelle Estate Agency, telephone 01652 636587. We recommend prior to making an appointment to view, prospective purchasers discuss any particular points likely to affect their interest in the property with one of our property consultants who have seen the property in order that you do not make a wasted journey.

MORTGAGE ADVICE

Budgeting correctly and choosing the right mortgage for a move is vital. For independent mortgage and insurance advice call our mortgage advisor on 01652636587 to arrange an appointment.

AGENTS NOTE

These particulars are for guidance only. Lovelle Estate Agency, their clients and any joint agents give notice that:- They have no authority to give or make representation/warranties regarding the property, or comment on the SERVICES, TENURE and RIGHT OF WAY of any property. These particulars do not form part of any contract and must not be relied upon as statements or representation of fact. All measurements/areas are approximate. The particulars including photographs and plans are for guidance only and are not necessarily comprehensive.

SKB Estates Limited T/A Lovelle Estate Agency

HOW TO MAKE AN OFFER

If you are interested in this property then it is important that you contact us at your earliest convenience. We will require certain pieces of personal information from you in order to provide a professional service to you and our client. The personal information you have provided to us may be shared with our client, the seller, but it will not be shared with any other third parties without your consent other than stated reasons detailed within our privacy policy. More information on how we hold and process your data is available on our website <https://www.lovelle.co.uk/privacy-policy/> and you can opt out at any time by simply contacting us.

For any offer you wish to make we will need to establish certain details before negotiation can take place. This is so that our vendor can make an informed choice when negotiating and accepting your offer. You will be asked to provide formal I.D. and address verification, as required under new Money Laundering Legislation. You might also have one or two questions for us, such as which solicitor to choose, or which mortgage lender has the best offers available for me. We have a one stop shop to satisfy all of these needs so please ask.

Score	Energy rating	Current	Potential
92+	A		93 A
81-91	B	82 B	
69-80	C		
55-68	D		
39-54	E		
21-38	F		
1-20	G		

A copy of the full Energy Performance Certificate for this property is available upon request. Advisory Notes - Please be advised if you are considering purchasing a property for Buy To Let purposes, from 1st April 2018 without an EPC rated E or above it will not be possible to issue a new tenancy, or renew an existing tenancy agreement.

ENTRANCE 3.92m x 1.92m (12'11" x 6'4")

Entered through a composite door into the hallway. Doors to all principal rooms and a staircase to the first floor accommodation. Handy storage cupboard.

LOUNGE 2.89m x 5.39m (9'6" x 17'8")

Bright and airy room with a window to the front elevation and two to the side elevation. Log burner.

KITCHEN DINER 5.4m x 3.26m (17'8" x 10'8")

Range of wall and base units with contrasting work surfaces and tiling. Inset electric oven, oven microwave and a five ring gas hob with an extraction canopy over. Integrated fridge freezer, dishwasher and washing machine. Composite sink and drainer with mixer tap. Finished with a breakfast bar and dining area.

Window and double opening French doors to the rear elevation.

WC

Two piece suite incorporating a push button WC and a wash hand basin with a mixer tap.

FIRST FLOOR ACCOMMODATION: 1.36m x 1.9m (4'6" x 6'2")

PRINCIPAL BEDROOM 3.15m x 3.83m (10'4" x 12'7")

Fitted wardrobes and chest of draws. Window to the front elevation.

BEDROOM TWO 3.15m x 3.26m (10'4" x 10'8")

Window to the front elevation.

BEDROOM THREE 2.14m x 2.76m (7'0" x 9'1")

Window to the side elevation.

FAMILY BATHROOM 2.16m x 2.15m (7'1" x 7'1")

Four piece suite incorporating a bathtub with a shower over and a mixer tap, a shower cubicle with a shower over, push button WC and a wash hand basin with a mixer tap. Decorative tiles to the wet areas and a chrome effect towel rail radiator. Window to the side elevation.

OUTSIDE THE PROPERTY:

FRONT ELEVATION

Block paved driveway with mature shrubbery and access to the rear garden.

REAR ELEVATION

Fully enclosed garden, predominantly laid with lawn with a delightful patio area. Perfect to entertain family and friends.

MANAGEMENT CHARGE

We believe is currently set at £100.00 per annum.

DISCLAIMER

Within the meaning of the Estate Agency Act 1979, the seller of this property is related to an employee of Lovelle Estate Agency.

LOCATION

Barton-upon-Humber is a highly regarded historic market town with Primary and Senior schools, quaint shops, supermarkets, stylish restaurants, cosy pubs, charming coffee shops and two petrol stations. It benefits from numerous recreational facilities and is surrounded by open countryside. The distinctive Churches, library, wildlife reserves and popular museums allow you to enjoy peace and tranquillity whilst the shopping and nightlife of neighbouring towns means you are never far away from a faster pace of life!

BROADBAND TYPE

Standard - 18 Mbps (download speed), 1 Mbps (upload speed),
Superfast - 80 Mbps (download speed), 20 Mbps (upload speed),
Ultrafast - 1800 Mbps (download speed), 220 Mbps (upload speed).

MOBILE COVERAGE

Outdoors - Great,
Indoors - Great,
Available - O2, Vodafone, EE, Three.

*

We are required by law to conduct anti-money laundering checks on all those selling or buying a property. Whilst we retain responsibility for ensuring checks and any ongoing monitoring are carried out correctly, the initial checks are carried out on our behalf by Landmark who will contact you once you have had an offer accepted on a property you wish to buy. The cost of these checks for buyers is £24.00 (incl. VAT) per client, which covers the cost of obtaining relevant data and any manual checks and monitoring which is required. This fee will need to be paid by you in advance of us issuing a memorandum of sale, directly to Landmark, and is non-refundable. We will receive some of the fee taken by Landmark to compensate for its role in the provision of these checks.

