

Plot 65, 67, Blenheim Avenue,  
Brough, HU15 1WP  
£389,995



**\*\* BELLWAY'S HOME OF THE MONTH \*\***

Clubleys Brough are pleased to present this perfect opportunity to secure your brand new Bellway home!

'The Goldsmith' offers contemporary family living which is great for the every day hustle & bustle. Situated in the popular location of Brough, which is close to a wide range of amenities as well as excellent transport links.

The accommodation briefly comprises of entrance hall, lounge, dining room, open plan kitchen/diner, W.C & utility to the ground floor. Four bedrooms (master & second bedroom with en-suite) & modern family bathroom.

Tenure - Freehold  
Tax Band - TBC  
EPC - A



[www.clubleys.com](http://www.clubleys.com)





Tenure: Freehold  
East Riding of Yorkshire  
BAND: New Build

#### Upgrades & Incentives

- 5% deposit contribution
- Glass splashback
- Upgraded sink & taps
- Grade 3 floor tiles to both ensuites & bathroom
- Carpets & LVT flooring
- Fitted wardrobe to bedroom one
- Enhanced landscaping
- Turf to rear garden
- Double boarded fencing

#### ACCOMMODATION COMPRISES

##### ENTRANCE HALLWAY

Modern grey composite entrance door with UPVC double glazed glass panel, storage cupboard, access to W.C, stairs leading to first floor accommodation, radiator, ceiling light.

##### LIVING ROOM

4.740 x 3.586 (15'6" x 11'9")

UPVC double glazed window to the front, radiator, ceiling light, fully carpeted.

##### DINING ROOM

3.020 x 2.667 (9'10" x 8'8")

UPVC double glazed window to the front, radiator, ceiling light, fully carpeted.

##### KITCHEN/DINER

3.220 x 8.560 (10'6" x 28'1")

A modern family kitchen/diner with a range of wall, base & drawer units with complimentary work surfaces & upstands, two integrated high level electric ovens, stainless sink with mixer tap, four ring gas hob with glass splashback, stainless steel extractor fan, integrated fridge/freezer, integrated dishwasher, recessed spotlights, radiator, space for kitchen table, UPVC double glazed window to the rear, UPVC double glazed French doors leading to rear garden.

##### UTILITY

1.981 x 1.632 (6'5" x 5'4")

Fitted with base units with work surface over & matching upstands, cupboard housing combi boiler, space/plumbing for washing machine, stainless sink with mixer tap, radiator, composite door leading to side of property, recessed spotlights.

##### DOWNSTAIRS WC

2.059 x 0.903 (6'9" x 2'11")

Pedestal wash hand basin, low level W.C, radiator.

#### FIRST FLOOR

##### MASTER BEDROOM

4.261 x 3.648 (13'11" x 11'11")

UPVC double glazed window to the front, fitted wardrobes, fully carpeted, radiator, ceiling light.

##### EN SUITE

2.279 x 1.443 (7'5" x 4'8")

UPVC double glazed opaque window to the side, shower cubicle with sliding door, pedestal wash hand basin, low level W.C, radiator, fully tiled, ceiling light.

##### BEDROOM TWO

3.690 x 3.648 (12'1" x 11'11")

UPVC double glazed window to the front, fully carpeted, space for wardrobes, radiator, ceiling light.

##### EN SUITE

2.603 x 1.528 (8'6" x 5'0")

UPVC double glazed opaque window the front, shower cubicle with sliding door, low level W.C, wall mounted wash hand basin, radiator, ceiling light, fully tiled.

##### BEDROOM THREE

4.376 x 2.656 (14'4" x 8'8")

UPVC double glazed window to the rear, space for wardrobe, radiator, ceiling light, fully carpeted.

##### BEDROOM FOUR

3.653 x 2.714 (11'11" x 8'10")

UPVC double glazed window to the rear, space for wardrobe, radiator, fully carpeted, ceiling light.

##### BATHROOM

2.714 x 2.075 (8'10" x 6'9")

UPVC double glazed opaque window to the rear, panelled bath, wall mounted wash hand basin, low level W.C, heated towel rail, fully tiled.

##### OUTSIDE

Turf to rear garden, high level timber boundary fencing, detached garage and driveway

#### ADDITIONAL INFORMATION

EPC RATING - A

COUNCIL TAX BAND - TBC

\*Broadband

For broadband coverage, prospective occupants are advised to check the Ofcom website:- <https://checker.ofcom.org.uk/en-gb/broadband-coverage>

\*Mobile

For mobile coverage, prospective occupants are advised to check the Ofcom website:- <https://checker.ofcom.org.uk/en-gb/mobile-coverage>

\*Referral Fees

We may receive a commission, payment, fee, or other reward or other benefit (known as a Referral Fee) from ancillary service providers for recommending their service to you. Details can be found on our website.

MEASUREMENTS/FLOORPLANS - Are approximate (not to scale) and for guidance only - Buyers are advised to check for their own reassurance.

#### SERVICES

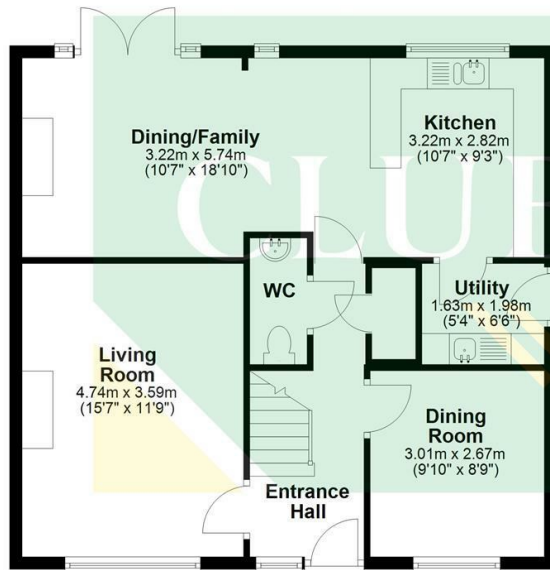
Mains gas, electricity, water and drainage are connected.

#### APPLIANCES

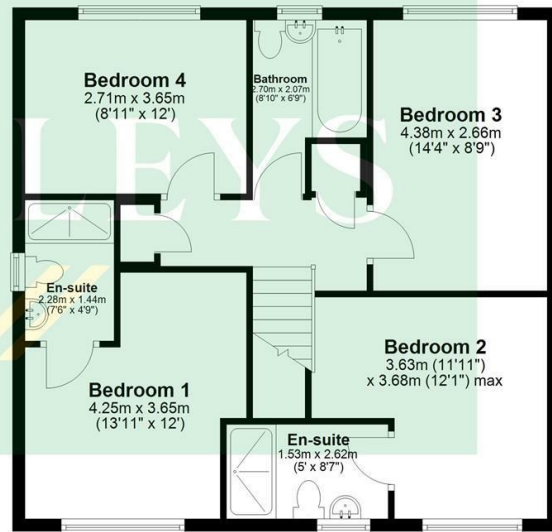
None of the appliances have been tested by the agent



## Ground Floor



## First Floor



### AGENTS NOTES

For clarification, we wish to inform prospective purchasers that we have not carried out a detailed Survey, nor tested the services, appliances and specific fittings for this property.

### VIEWING

By appointment with the Agent.

### OPENING HOURS

9 am to 5.30 pm Monday to Friday and 9 am to 3 pm Saturday

### FREE VALUATIONS FOR SALE

If you are considering selling or letting your property, we offer a free, no obligation valuation service and would be pleased to discuss your individual requirements with you. Please ring 01430 874000 for further information or to arrange for one of our Valuers to call.

### MATERIAL INFORMATION

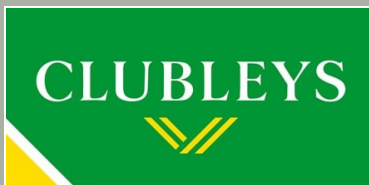
For broadband coverage, prospective occupants are advised to check the Ofcom website:- <https://checker.ofcom.org.uk/en-gb/broadband-coverage>. For mobile coverage, prospective occupants are advised to check the Ofcom website:- <https://checker.ofcom.org.uk/en-gb/mobile-coverage>

We may receive a commission, payment, fee, or other reward or other benefit (known as a Referral Fee) from ancillary service providers for recommending their service to you. Details can be found on our website.

### MORTGAGES

We are keen to stress the importance of seeking professional Mortgage advice and would recommend that an appointment be made to see Faye Rowland (Holmefield Financial Solutions), Mortgage and Protection Advisor by phoning her on 07540 536891 or e-mail [Faye@holmefieldsolutions.co.uk](mailto:Faye@holmefieldsolutions.co.uk) or by contacting any member of staff. A broker fee of £199 will be charged on application. Your home may be repossessed if you do not keep up repayments on your mortgage. Holmefield Financial Solutions is an appointed representative of First Complete Ltd., which is authorised and regulated by the Financial Conduct Authority.

Please note that this floor plan is not to scale and is only intended as a guide to layout. All measurements provided are approximate and for guidance purposes only. If there is any point which is of a particular importance to you, please contact the office and we will be pleased to check the information, particularly if you contemplate travelling some distance to view the property.



1 Toft Court, Skillings Lane, Brough, East  
Yorkshire, HU15 1BA  
01482 662211  
[brough@clubleys.com](mailto:brough@clubleys.com)  
[www.clubleys.com](http://www.clubleys.com)

| Energy Efficiency Rating                    |  | Current                 | Potential |
|---|--|-------------------------|-----------|
| Very energy efficient - lower running costs |  |                         |           |
| (92 plus) <b>A</b>                          |  | <b>93</b>               | <b>94</b> |
| (81-91) <b>B</b>                            |  |                         |           |
| (69-80) <b>C</b>                            |  |                         |           |
| (55-68) <b>D</b>                            |  |                         |           |
| (39-54) <b>E</b>                            |  |                         |           |
| (21-38) <b>F</b>                            |  |                         |           |
| (1-20) <b>G</b>                             |  |                         |           |
| Not energy efficient - higher running costs |  |                         |           |
| <b>England &amp; Wales</b>                  |  | EU Directive 2002/91/EC |           |

Clubleys give notice that these particulars whilst believed to be accurate are set out as a general outline only for guidance and do not constitute any part of an offer or contract. Intending purchasers or tenants should not rely on them as statements or representation of fact, but must satisfy themselves by inspection or otherwise as to their accuracy. No person in the employment of Clubleys has the authority to make or give any representation or warranty in relation to the property.

Photograph disclaimer – In order to capture the features of a particular room we will mostly use wide angle lens photography. This will sometimes distort the image slightly and also has the potential to make a room look larger. Please, therefore, refer also to the room measurements detailed within this Brochure.