



OAKFIELD



Church Road, St. Leonards, TN37 6EE

£925 Per Calendar Month



Church Road, St. Leonards, TN37 6EE

A beautifully presented one-bedroom apartment ideally located just a short walk from St Leonards Gardens, the seafront promenade, and an excellent selection of local galleries, cafés, and eateries. Perfectly positioned to enjoy everything the area has to offer, the property also benefits from easy access to the mainline station with direct connections to London, Gatwick, and Brighton.

Situated on the first floor of an attractive period townhouse, the accommodation is well arranged and filled with natural light throughout. The property comprises a spacious living room featuring a large bay window, a modern fitted kitchen complete with an electric hob and oven, integrated fridge/freezer, washing machine, dishwasher, and ample worktop and storage space.

The double bedroom is positioned to the side of the property and enjoys a striking feature window, creating a bright and inviting space. Completing the accommodation is a contemporary bathroom fitted with a shower over the bath, wash basin, and WC.

Please note:
Annual household income of £27,750 is required to meet the affordability criteria for this property.
Available Early September 2026.





Living Room

17'9" x 12'2" (5.41m x 3.71m)

Kitchen

14'5" x 5'3" (4.39m x 1.60m)

Bedroom

13'1" x 8'2" (4.00m x 2.50m)

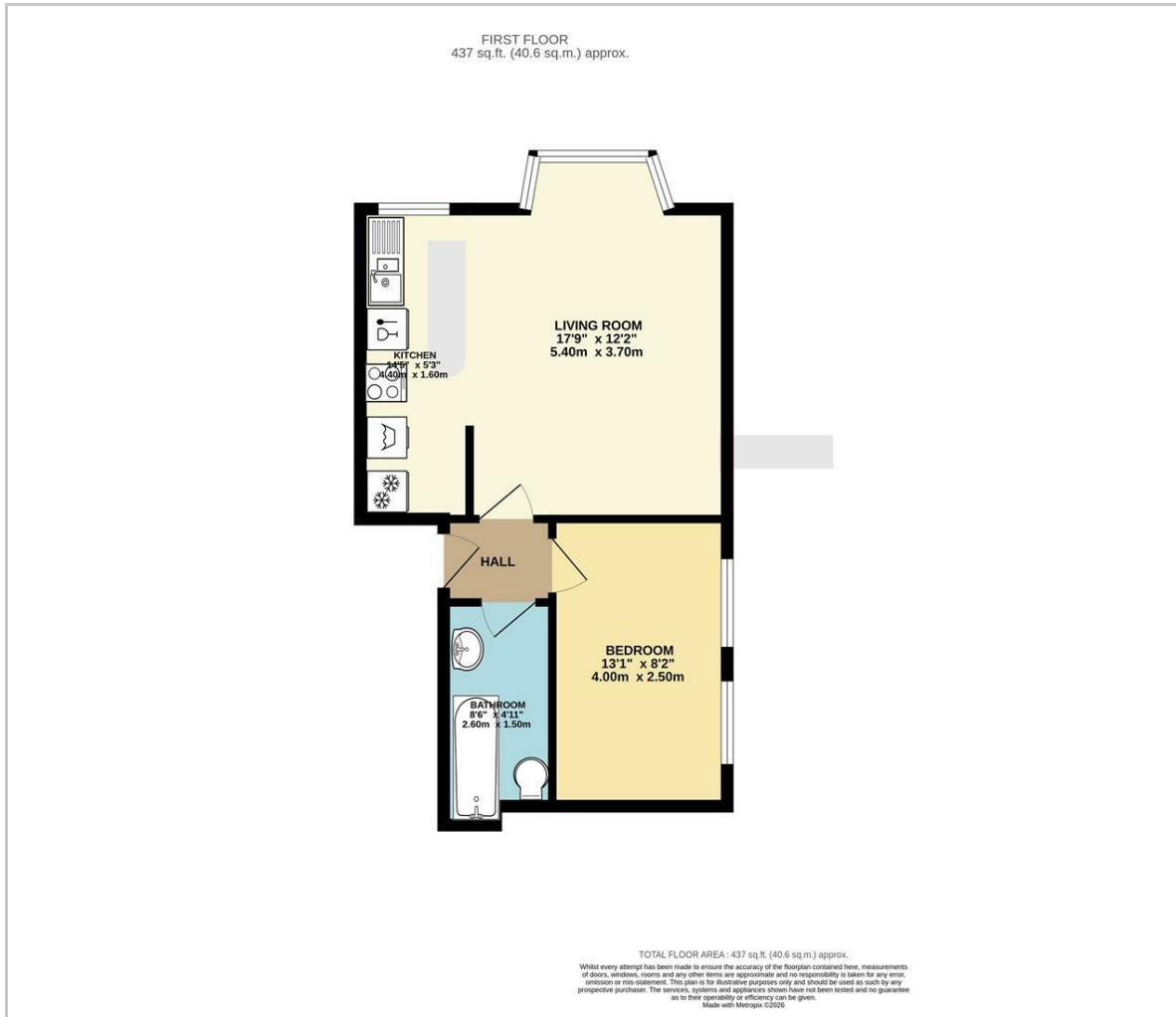
Bathroom

8'6" x 4'11" (2.60m x 1.50m)

Council Tax Band A - £1,784.39 Per Annum



Floor Plan

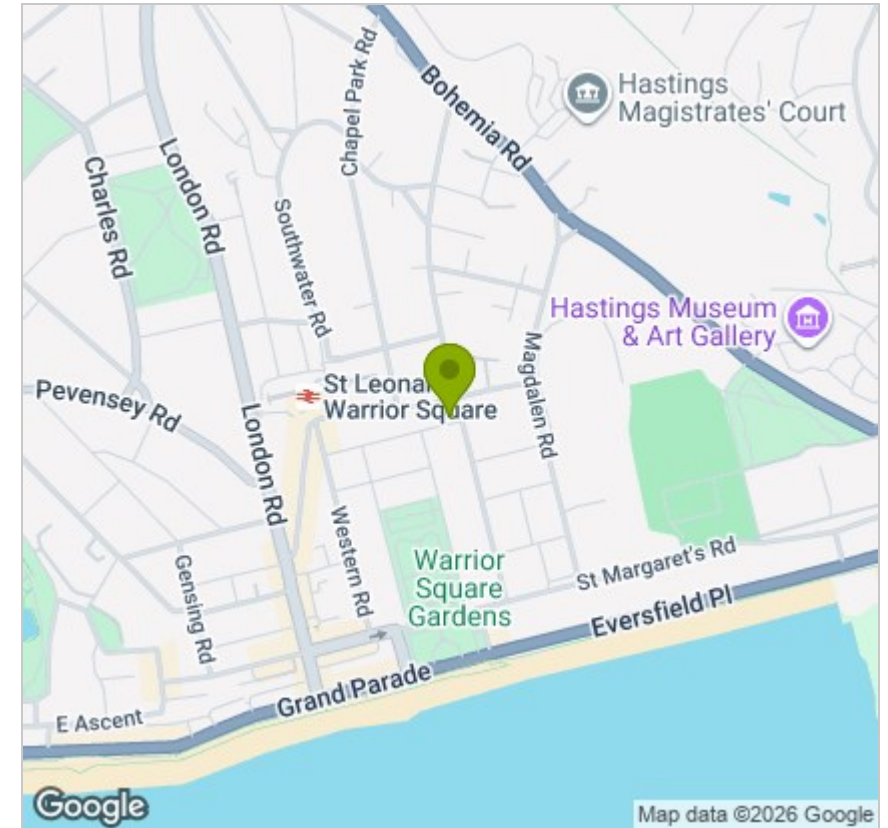


Viewing

Please contact us on 01424 446644
if you wish to arrange a viewing appointment for this property or require further information.

These particulars, whilst believed to be accurate are set out as a general outline only for guidance and do not constitute any part of an offer or contract. Intending purchasers should not rely on them as statements of representation of fact, but must satisfy themselves by inspection or otherwise as to their accuracy. No person in this firm's employment has the authority to make or give any representation or warranty in respect of the property.

Area Map



Energy Efficiency Graph

