



Price
£375,000

Freehold

3x  1x  1x 

**Manser Road, Rainham,
Essex, RM13**

 **DOUGLAS
ALLEN**
Helping you move forwards



Main features

- Mid terraced home offering potential to extend (STPP)
- Large rear garden
- Modern kitchen
- Good road links & amenities
- Conveniently situated for local schools & Rainham Station

Accommodation

GROUND FLOOR

Hallway
 Lounge: 15'4 x 13'2 (4.68m x 4.02m)
 Dining Area: 15'4 x 8'5 (4.68m x 2.57m)
 Kitchen: 9'7 x 8'8 (2.92m x 2.64m)
 Shower Room: 9'6 x 5'7 (2.90m x 1.70m)

FIRST FLOOR

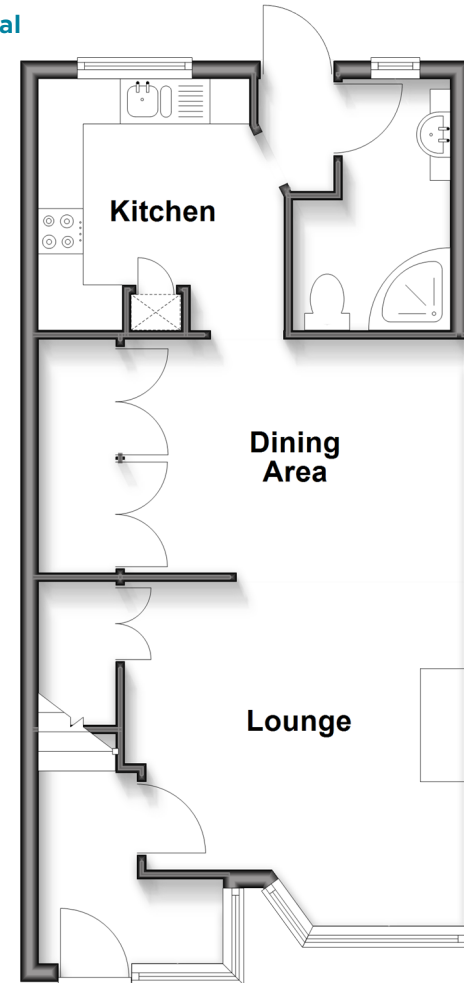
Landing
 Bedroom 1: 15'8 x 11'2 (4.78m x 3.41m)
 Bedroom 2: 10'0 x 8'6 (3.05m x 2.59m)
 Bedroom 3: 6'8 x 6'6 (2.03m x 1.98m)

OUTSIDE

Rear Garden
 Off road parking

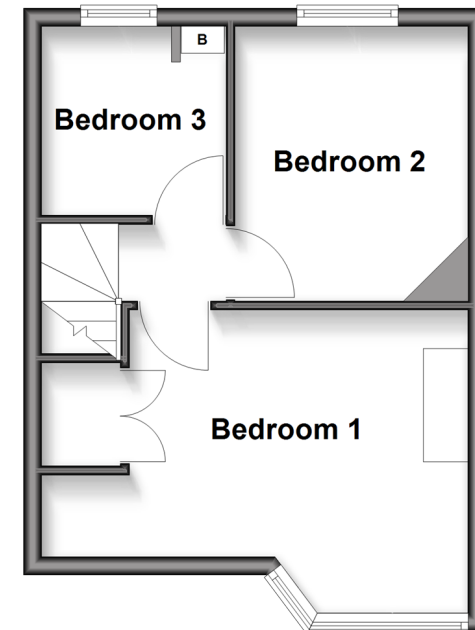
Ground Floor

Approx. 44.4 sq. metres (478.3 sq. feet)



First Floor

Approx. 29.0 sq. metres (312.3 sq. feet)



Call Hornchurch - 01708 437777 ■ douglasallen.co.uk

- A private rental licensing scheme applies to some properties in this area, please contact us before proceeding
- Legal advice should be taken to verify fixtures/fittings, planning, alterations and/or lease details
- Appliances & services are untested, dimensions are approximate and floor plans are not to scale



51916474/20250813/CC1/MJ