



Cromer Street, WC1H

£490 Per week

A well presented garden facing flat with a separate kitchen in a secured block. The flat has a very spacious reception room with a Juliet balcony and a separate sleeping area.

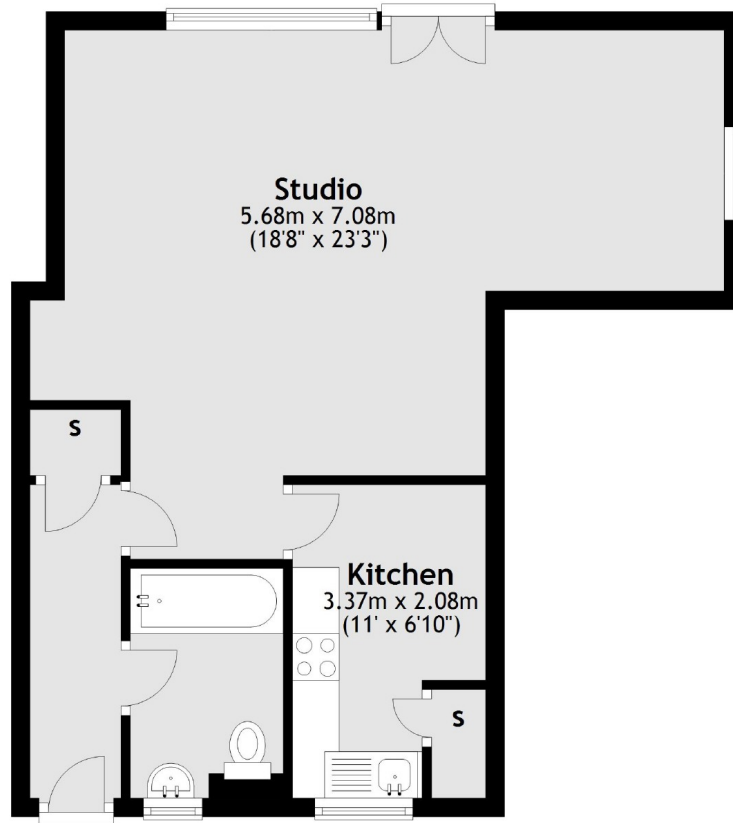
The property is situated on the corner of Cromer Street and Judd Street a short walk from Russell Square, Brunswick Centre and UCL. It is a purpose built building with lifts. Kings Cross and Euston are also within a 5 minute walk.

Features

- Studio Flat
- Separate Kitchen
- Juliet Balcony
- Lots of Natural Light
- 46 Sqm
- Separate Sleeping Area

Cromer Street,
London, WC1H

Second Floor



Total area: approx. 46.4 sq. metres (499.8 sq. feet)

Dexters

Bloomsbury
55-56 Coram Street
London
WC1N 1HB
Lettings
020 7833 4488

Energy Rating: C. We aim to make our particulars both accurate and reliable. However they are not guaranteed; nor do they form part of an offer or contract. If you require clarification on any points then please contact us, especially if you're traveling some distance to view. Please note that appliances and heating systems have not been tested and therefore no warranties can be given as to their good working order.

 **RICS** | Regulated
Estate Agent
and Letting Agent

dexters.co.uk