



Rotherhithe Street, SE16

£475,000

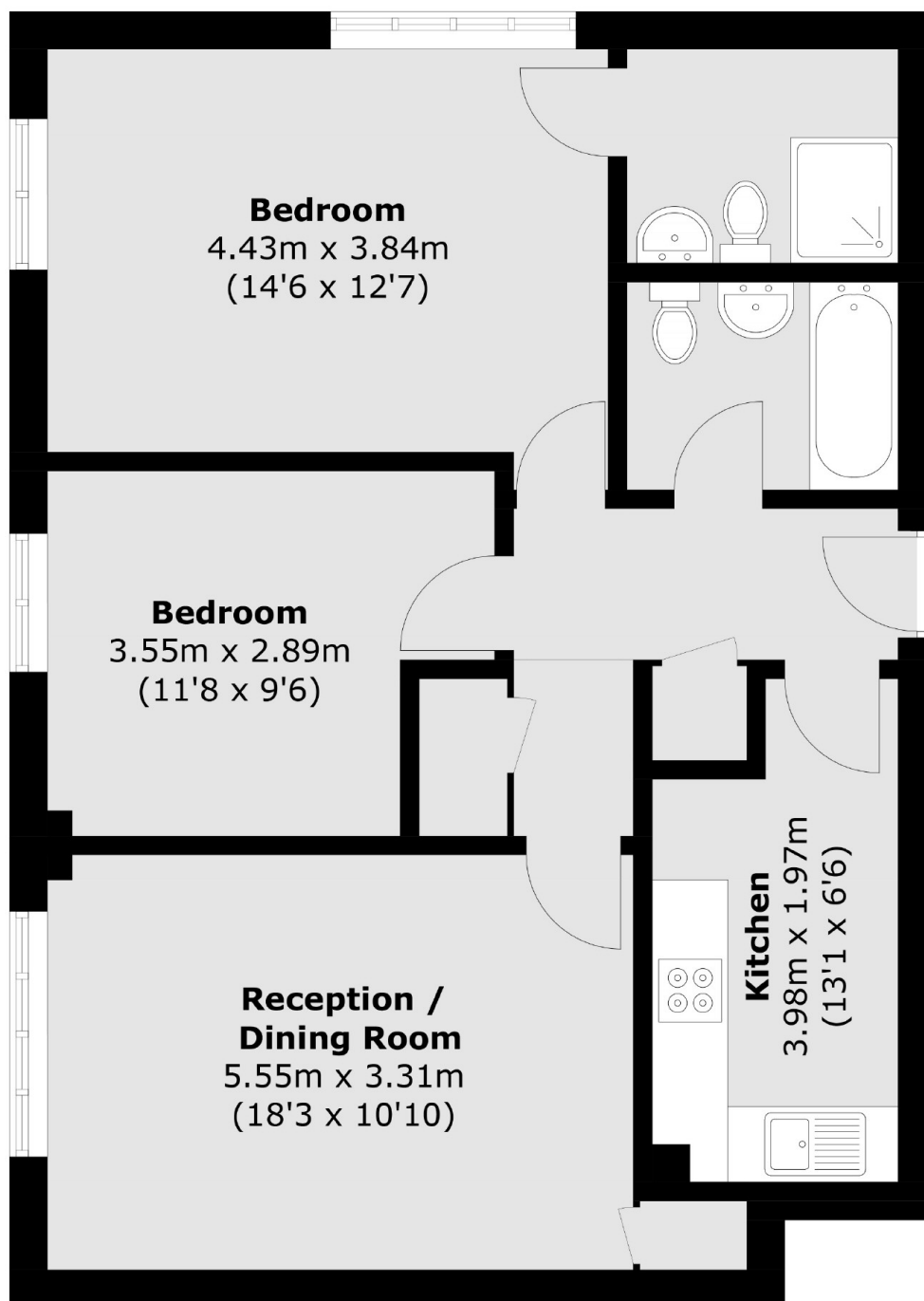
Located within this sought after riverside development, this bright and airy two double bedroom flat has been fully refurbished throughout and has a large living space, new kitchen, two modern bathrooms, ample storage and secure parking.

Pennington Court is located between Rotherhithe station and Canada Water station offering great transport links to all of London. A wide range of riverside pubs and restaurants are also close by.

Features

- Two Double Bedrooms
- Two Bathrooms
- Fantastic Condition
- Share Of The Freehold
- Allocated Parking
- Riverside Development

Rotherhithe Street, London, SE16



Total area (approx.): 64.8 sq. m (697.5 sq. ft)