

Property ref: 178756

Cintra Avenue, Reading, RG2 7AU

£1,250 PCM

HASLAM'S
Lettings



A very well presented one bedroom top floor apartment located adjacent to Cintra Park situated within an attractive period building. Please note - there is no lift in the building.

Reading Borough Council Tax Band B.

Broadband/Mobile Info: Connections available. For an indication of specific speeds and supply of Broadband and Mobile, we advise applicants go to the Ofcom website Broadband and Mobile Coverage Checker.

Available 08/09/2026

- One double bedroom
- Fully fitted kitchen with appliances
- Bathroom with shower over bath
- Allocated parking; Furnished
- Gas central heating; EPC rating C
- Managed by LANDLORD

*Fees For Assured Periodic Tenancies: when you rent a property from us you will be required to pay a sum equivalent to one weeks' rent for a holding deposit. Upon successful application, this amount will be off set against your first months' rent. You will also be required to pay a security deposit equivalent to 5 weeks' rent which will be held and protected in line with Deposit legislation. For more information about our fees please visit: www.haslams.net
Fees for all other tenancies (Non Housing Act Tenancies / Company Lets): when you rent a property from us we will charge you a one-off fee per property. This charge is the equivalent of 15 days of the monthly rental charge (+VAT) with a minimum fee of £450 (inc.VAT) up to a maximum of £650 (inc.VAT). Other fees may apply depending on your circumstances.

0118 960 1055

lettings@haslams.net www.haslams.net

Haslams Estate Agents Ltd, 159 Friar Street, Reading, Berkshire, RG1 1HE





Cintra Avenue, Reading, RG2

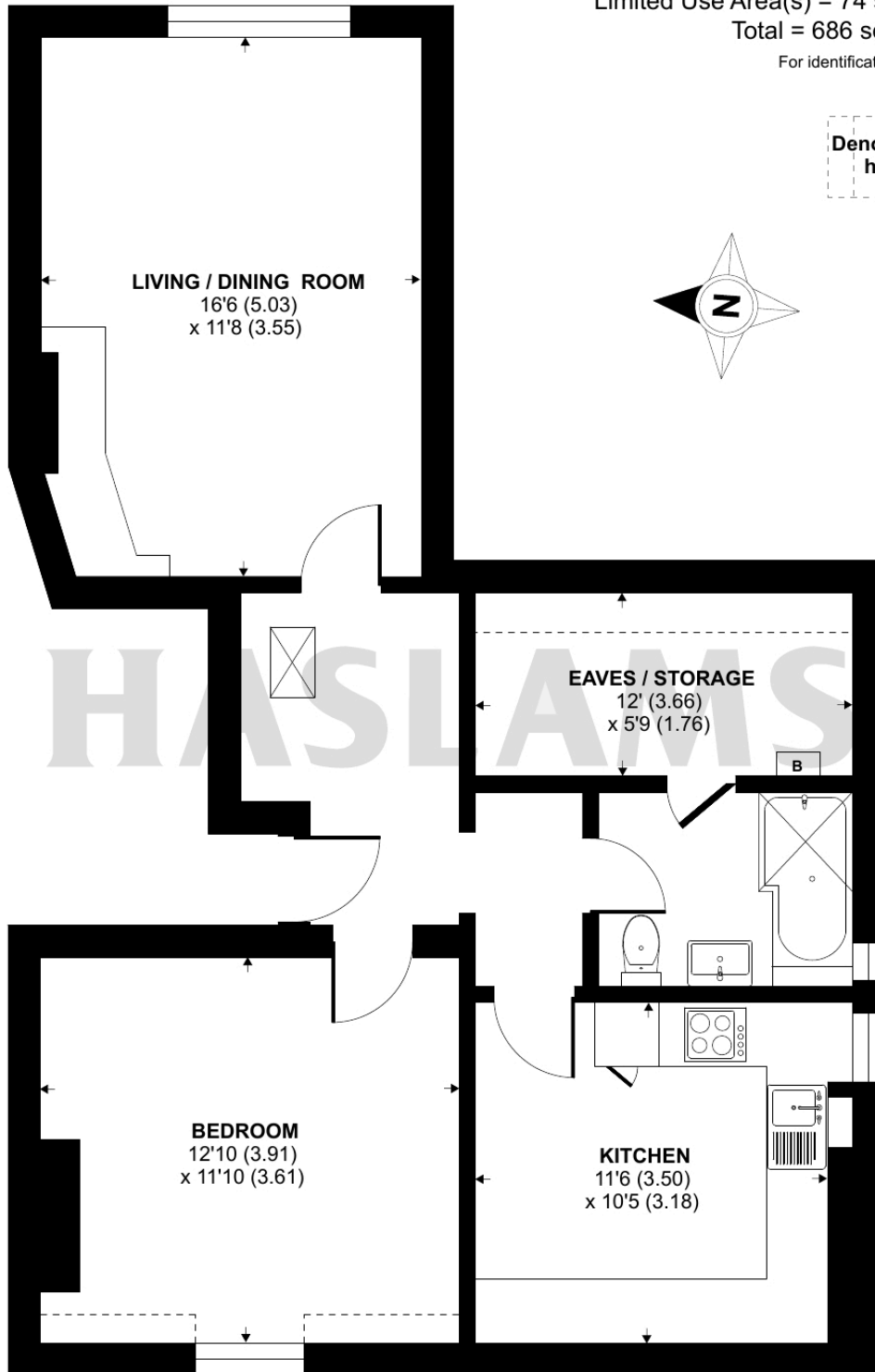
Approximate Area = 612 sq ft / 56.8 sq m

Limited Use Area(s) = 74 sq ft / 6.8 sq m

Total = 686 sq ft / 63.6 sq m

For identification only - Not to scale

Denotes restricted head height



SECOND FLOOR

 Floor plan produced in accordance with RICS Property Measurement 2nd Edition, Incorporating International Property Measurement Standards (IPMS2 Residential). © n̄checom 2026. Produced for Haslam's. REF: 1416511