



Guide Price
£450,000

Freehold

3x  1x  1x 

**Portman Drive,
Billericay, Essex CM12**

OVER 60?

Secure this property
for up to **59% less!**

 **DOUGLAS
ALLEN**
Helping you move forwards



Main features

- 3 bedroom semi-detached house
- Well looked after throughout
- Quiet cul-de-sac location
- In catchment to local well regarded schools
- Detached garage and off road parking

Accommodation

Entrance Hall

Lounge : 13'4 x 12'4 (4.07m x 3.76m)

Dining Area: 11'1 x 8'0 (3.38m x 2.44m)

Kitchen: 11'1 x 7'7 (3.38m x 2.31m)

FIRST FLOOR

Landing

Bedroom 1: 13'0 x 9'4 (3.97m x 2.85m)

Bedroom 2: 11'6 x 9'4 (3.51m x 2.85m)

Bedroom 3: 9'9 x 6'5 (2.97m x 1.96m)

Bathroom

OUTSIDE

Front Garden

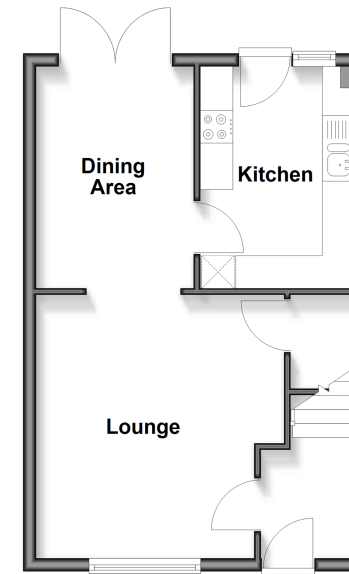
Driveway

Detached Garage

Rear Garden

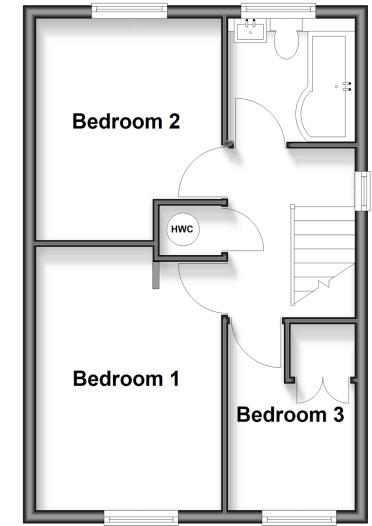
Ground Floor

Approx. 36.8 sq. metres (395.9 sq. feet)



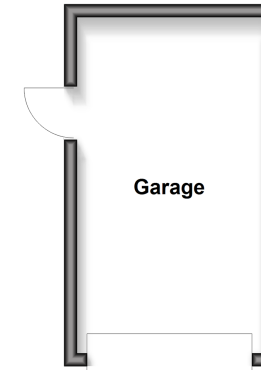
First Floor

Approx. 36.8 sq. metres (395.9 sq. feet)



Garage

Approx. 14.6 sq. metres (157.6 sq. feet)



Call Billericay - 01277 631377 ■ douglasallen.co.uk

■ Through a Homewise Home For Life Plan people aged 60+ can secure this property for up to 59% less, by purchasing a Lifetime Lease



50310686/20260511/MB/GJ