



## Burbage Close, SE1

£499,500

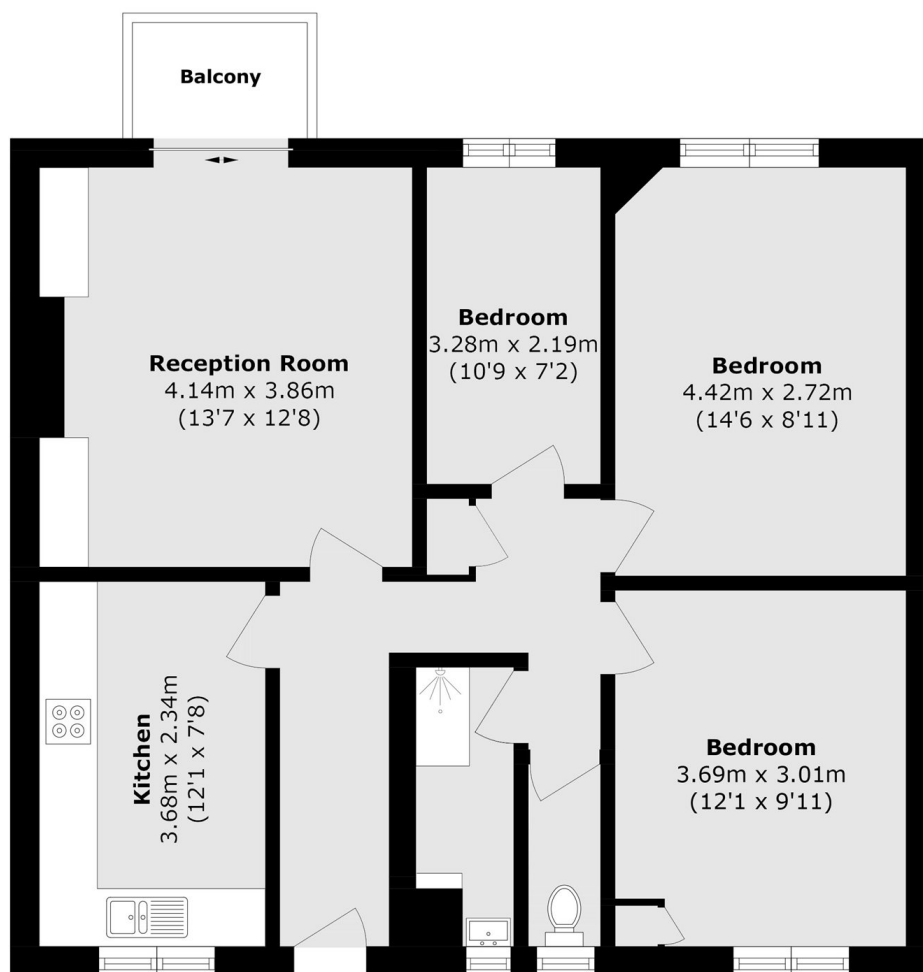
An impressive and attractively proportioned lateral flat, boasting a spacious living room, that opens onto a private south-facing balcony. The property also features a large kitchen-diner, with ample storage, three generously sized bedrooms, and a contemporary shower room, all thoughtfully arranged to create a bright and inviting home.

Burbage Close is a peaceful side street tucked just off Great Dover Street, 0.4 miles from Borough Underground station and within walking distance of London Bridge. The world-famous Borough Market, with its artisan food stalls and lively atmosphere, is just beyond, along with an array of cafés, bars, and restaurants.

### Features

Third Floor Flat  
Three Bedrooms  
Private Balcony  
Secure Entry & Lift Access  
Permit Parking Available  
Chain Free Sale

# Burbage Close, London, SE1



## Third Floor

Total area (approx.): 72.3 sq. m (778.2 sq. ft)

Balcony area (approx.): 2.1 sq. m (22.6 sq. ft)