

FOR SALE

39a, Gathurst Road, Orrell, WN5 8QJ



39a, Gathurst Road, Orrell, WN5 8QJ

Superb 1930s semi-detached starter home with open plan design & wonderful views



- Stunning 1930s semi-detached home
- Superb open plan design
- Sought after location
- Sunny, westerly aspect
- 2 double bedrooms
- Perfect starter property
- Wonderful open views
- SQFT

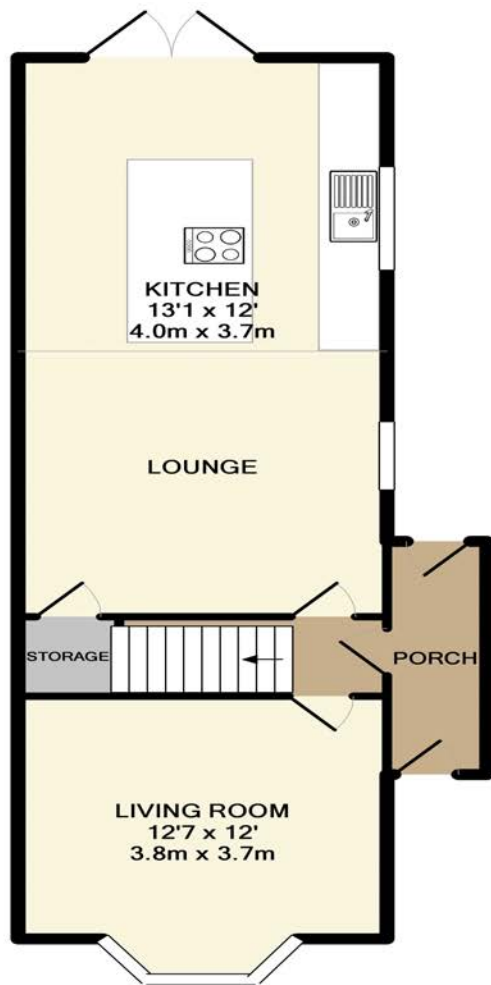
Boasting beautiful modern interiors which have been blended effortlessly with 1930s style period detail - this quite stunning traditional semi-detached home is positioned along the hugely popular Gathurst Road and enviably backs onto open farmer's fields at the rear.

Ideal then for any first time buyers looking to get onto the property ladder, the home internally is ready for clients to simply move in and start unpacking & is finished with very light & contemporary decor coupled with many original features that have been sympathetically retained. In brief the property comprises; an entrance porch, pretty main lounge to the front with beautiful high coved ceilings & lovely rounded bay window. To the rear, there is a stunning open plan living kitchen diner which is comfortably the property's stand out feature & should prove very popular with buyers. Boasting a smart central island unit, low spot lighting and French Doors leading onto the garden, this immaculate and practical kitchen flows nicely from a sitting room & is perfect for entertaining or for family life. Upstairs there are two double bedrooms plus a stylish principal bathroom suite.

Externally, the garden to the rear is fully landscaped, with an Indian Stone patio, timber gazebo and seating area, plus a large lawn and beautiful open views across fields. The rear also enjoys a westerly facing aspect and lots of late summer sun. To the front is a concrete imprinted double driveway with off road parking. Early viewings are highly recommended.







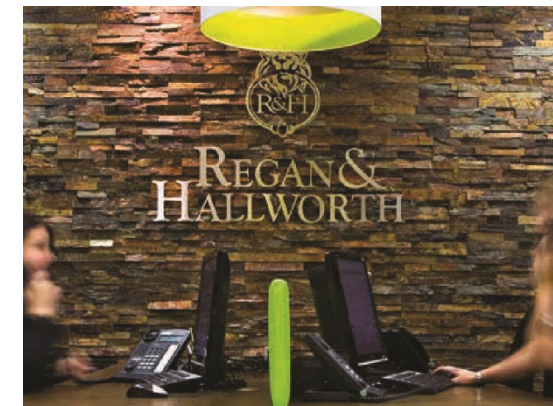
GROUND FLOOR
APPROX. FLOOR
AREA 512 SQ.FT.
(47.6 SQ.M.)



1ST FLOOR
APPROX. FLOOR
AREA 321 SQ.FT.
(29.8 SQ.M.)

TOTAL APPROX. FLOOR AREA 833 SQ.FT. (77.4 SQ.M.)

Whilst every attempt has been made to ensure the accuracy of the floor plan contained here, measurements of doors, windows, rooms and any other items are approximate and no responsibility is taken for any error, omission, or mis-statement. This plan is for illustrative purposes only and should be used as such by any prospective purchaser. The services, systems and appliances shown have not been tested and no guarantee as to their operability or efficiency can be given
Made with Metropix ©2016



WIGAN OFFICE

4-6 Library Street, Wigan
Lancashire WN1 1NN
01942 205555
wigan@reganandhallworth.com

STANDISH OFFICE

8 High Street, Standish
Wigan WN6 0HL
01257 473727
standish@reganandhallworth.com

PARBOLD OFFICE

5-7 Station Road, Parbold Village
Lancashire WN8 7NU
01257 464644
parbold@reganandhallworth.com

rightmove

onTheMarket.com



LR Finance

We do our best to ensure that our sales particulars are accurate and are not misleading. We also ask our clients to check their own sales particulars and verify the information contained in them is correct. However, fixtures and fittings and appliances have not been tested and therefore no guarantee can be given that they are in working order. All measurements and land sizes are quoted approximately. **Tenure** - Regan & hallworth have not had sight of the title documents and therefore the buyer is advised to obtain verification from their solicitors or surveyor. **Council Tax** - You are advised to contact the local authority for details. **Wigan:** 01942 244991 | **West Lancashire:** 01695 585258 | **Chorley:** 01257 515151. If there is any point of particular interest to you please contact us and we will be pleased to check the information.

@reganhallworth

Regan & Hallworth

@reganandhallworth

@reganhallworth

www.reganandhallworth.com