



40 Parsons Piece
Banbury, Oxon, OX16 9GW



ROUND & JACKSON
ESTATE AGENTS





A spacious two-bedroom terraced house with two allocated parking space which is located within this highly regarded development on the south side of town. 47% shared ownership.

The Property

40 Parsons Piece, Banbury is a well presented and spacious two-bedroom house which is pleasantly located within a sought-after modern development on the south side of town and is set back from the road and opposite a pretty park and green. The property offers excellent opportunity to purchase a 47% shared ownership share for £131,600. The accommodation is arranged over two floors and is well laid out, with an entrance hallway, spacious sitting room, cloakroom/W.C. and kitchen/breakfast room on the ground floor. On the first floor there is a central landing, two good sized double bedrooms and a family bathroom. Outside of the property to the rear there is a south westerly facing garden which gives access to the parking area where there are two allocated parking spaces.

We have prepared a floorplan to show the room sizes and layout. Some of the main features include:

Entrance Hallway

Main door to front, stairs rising to the first floor and door to the sitting room.

Sitting Room

A large reception room with a window to the front aspect and door to the kitchen/dining room.

Kitchen/Dining Room

Fitted with a range of modern eye level cabinets with base units and drawers, work surfaces over and an inset one and a half bowl sink and draining board. There is an integrated single oven with a four ring gas hob above and extractor hood over, space and plumbing for a washing machine, dishwasher and fridge/freezer. Within the dining area there is space for furniture, double doors and window to the rear garden and door to the cloakroom/W.C.

Cloakroom/W.C.

Fitted with a wash hand basin and W.C.

First Floor Landing

With doors to all first floor accommodation and hatch to the loft space.

Bedroom One

A large double bedroom with two windows to the rear aspect.

Bedroom Two

A double bedroom with a window to the front aspect.

Family Bathroom

Fitted with a modern suite comprising a panelled bath with a shower over, W.C., wash hand basin heated towel rail and a window to the front aspect.

Outside

To the front of the property there is a small lawned garden area with established shrubs and plants. To the rear of the property there is a south westerly facing garden which has a patio seating area adjoining the house and pathway leading to the rear access, an artificial lawned area and raised flower beds. The gated access to the rear will lead to car park which provides allocated parking for two vehicles.

Shared Ownership Information

Any potential buyer will be assessed in line with Homes England affordability to ensure they meet.

The monthly rental cost for the unowned 53% is £441.93. Monthly service charge: £21.91.

Monthly buildings insurance: £12.63

Lease term remaining: 116 years



Situation

Banbury is conveniently located only 2 miles from junction 11 of the M40 putting Oxford (22 miles), Birmingham (43 miles), London (78 miles) and of course the rest of the motorway network within easy reach. There are regular trains from Banbury to London Marylebone (51 mins) and Birmingham Snow Hill (55mins). Birmingham International airport is 42 miles away for UK, European and New York Flights. Some very attractive countryside surrounds and many places of historical interest are within easy reach.

Directions

From Banbury Cross proceed via South Bar Street and turn right onto the Bloxham Road (A361). Continue for around half a mile and turn left at the mini roundabout into Parsons Piece. Follow the road ahead and the property will be found after a short distance on your right-hand side.

Services

All mains services connected.

Local Authority

Cherwell District Council. Tax band B.

Tenure

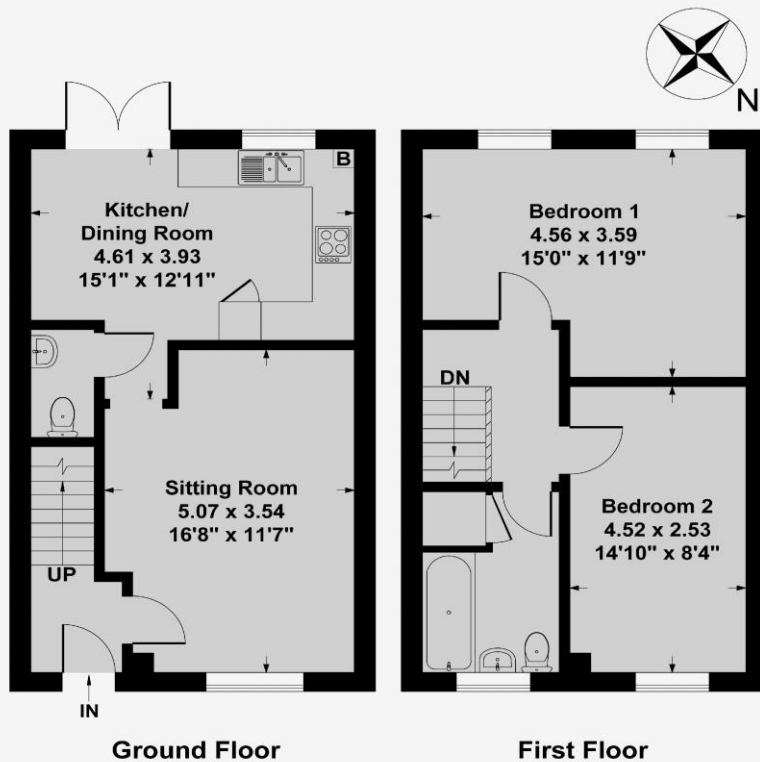
A Leasehold Property

Viewing Arrangements

By Prior arrangement with Round & Jackson.

Asking Price: **£131,600** for a 47% share





Ground Floor Approx Area = 37.91 sq m / 408 sq ft
First Floor Approx Area = 37.91 sq m / 408 sq ft
Total Area = 75.82 sq m / 816 sq ft

Measurements are approximate, not to scale,
 illustration is for identification purposes only.

www.focuspointhomes.co.uk



IMPORTANT NOTE TO PURCHASERS: We endeavour to make our sales particulars accurate and reliable, however, they do not constitute or form part of an offer or any contract and none is to be relied upon as statements of representation or fact. The services, systems and appliances listed in this specification have not been tested by us and no guarantee as to their operating ability or efficiency is given. All measurements have been taken as guide to prospective buyers only, and are not precise. If you require clarification or further information on any points, please contact us, especially if you are travelling some distance to view.

Banbury - The Office, Oxford Road, Banbury, Oxon, OX16 9XA

T: 01295 279953 E: office@roundandjackson.co.uk

Bloxham - High Street, Bloxham, Oxon, OX15 4LU

T: 01295 720683 E: office@roundandjackson.co.uk

www.roundandjackson.co.uk



ROUND & JACKSON
 ESTATE AGENTS

Property Misdescriptions Act 1991: The Agents have not tested any apparatus, equipment, fixtures and fittings, or services, so cannot verify that they are in working order or fit for the purpose. The buyer is advised to obtain verification from his or her professional buyer. References to the Tenure of the property are based on information supplied by the Vendor. The agents have not had sight of the title documents. The buyer is advised to obtain verification from their solicitor. You are advised to check the availability of any property before travelling any distance to view.