

NEVIN & WELLS

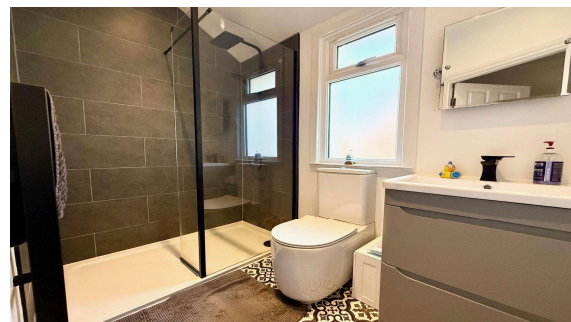
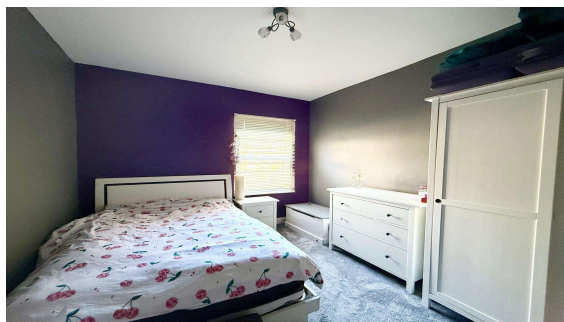
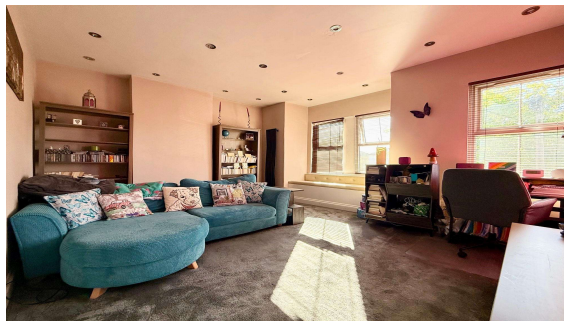
Residential

Established 2002



Gordon Road, Ashford, TW15 3EU

£250,000 Share of F/H



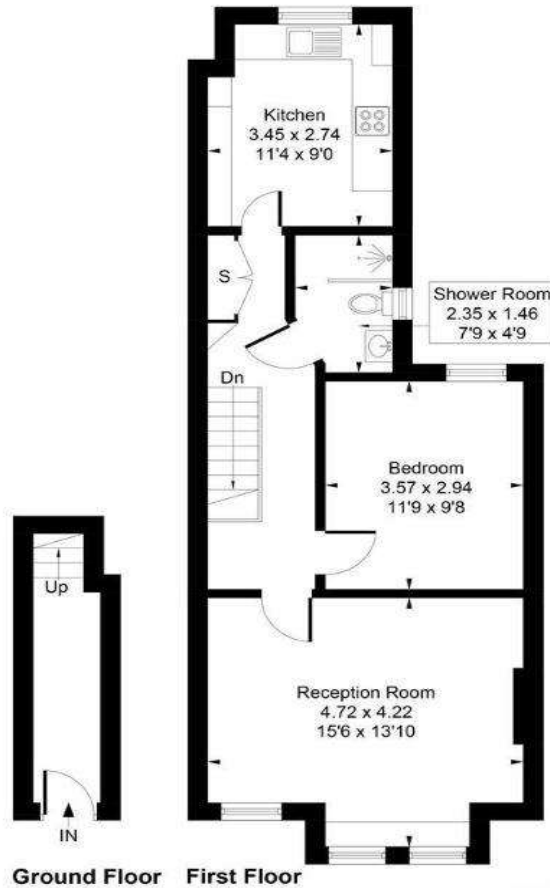
A beautifully presented one bedroom first floor Victorian converted maisonette being offered with share of Freehold. This charming home effortlessly blends period character with modern living offering high ceilings, generous proportions and an abundance of natural light. Conveniently located just a short stroll from Ashford train station and High Street, an ideal spot for commuters and those seeking easy access to local shops, cafés and restaurants. Comprising a spacious lounge, well-appointed modern kitchen, comfortable double bedroom and contemporary bathroom.

Gordon Road, Ashford, Middlesex, TW15 3EU

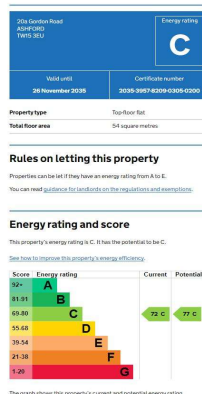
FLOOR PLAN



Approximate Gross Internal Area
56.38 sq m / 607 sq ft



EPC



LEASE:

Over 900 years

COUNCIL TAX BAND:

B - Spelthorne Borough Council

VIEWINGS:

By appointment with the clients selling agents,
Nevin & Wells Residential on 01784 437 437 or visit
www.nevinandwells.co.uk



All measurements are approximate. Nevin & Wells Residential have not tested any systems or appliances.