



Bowling View, Northowram, Halifax
Halifax

Offers in the Region of
£950,000

Bedrooms: 6 | Bathrooms: 3 | Receptions: 2

Bowling view is an impressive, three-storey, detached property situated on an exclusive development of just three unique homes, within walking distance of Northowram Village.

Explore this stunning and immaculately presented six bedroom detached property which offers luxurious accommodation, and everything required to suit modern family life.

The property is extremely spacious, boasting a stunning entrance hallway, a luxury family kitchen/diner, luxury bathrooms, private garden and an integral garage. The property also features high specification fixtures and fittings throughout.

To the ground floor there is a grand entrance hallway with laminate flooring, stylish built in shoe rack and a useful walk in storage cupboard. Leading from the hallway there is access to a second reception, WC and the Kitchen/Diner.

This kitchen/diner truly is the hub of the home, having bi-fold doors leading to the private rear garden. There are matching wall and base units, Dekton Laurent work surfaces and NEFF appliances. Also featuring a breakfast bar with seating for three people, a luxury bar with wine cooler and ample space for a family dining kitchen. A large living leads from the kitchen/diner and provides a quiet space to relax with a feature media wall and electric flame fire. There is a spacious second reception room (could be used as a snug/playroom/office).

An oak and glass balustrade staircase with luxury carpet takes you to the first floor, where there is a large master bedroom with a luxurious en-suite and dressing room. There are a further three double bedrooms, one with an en-suite, also accessed from the landing. To the second floor there are a further two large double bedrooms, one used as a Cinema room and one used as Yoga room and a luxurious bathroom.

To the rear is a private and enclosed garden with an artificial lawn, raised borders and porcelain patio areas. To the front is a large driveway with parking for four cars, leading to an integral garage with electric doors. A paved pathway leads to the door with a lawn to the side.

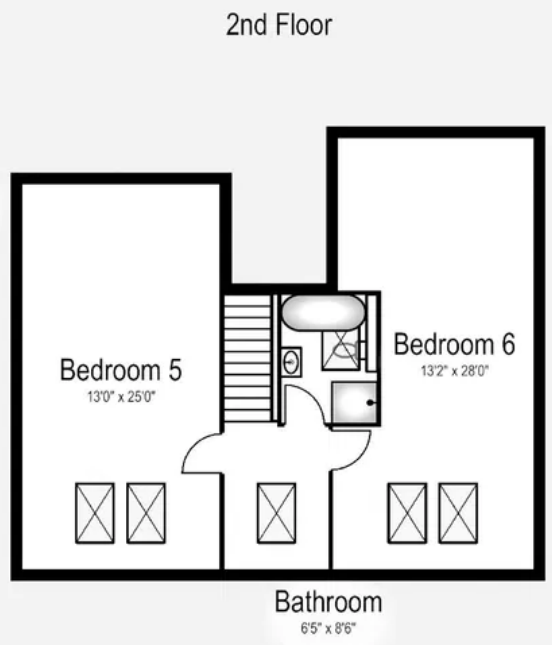
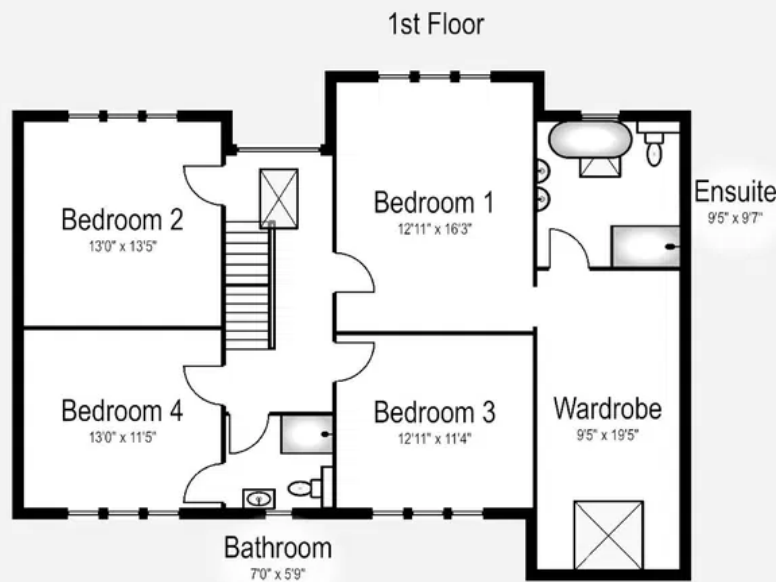
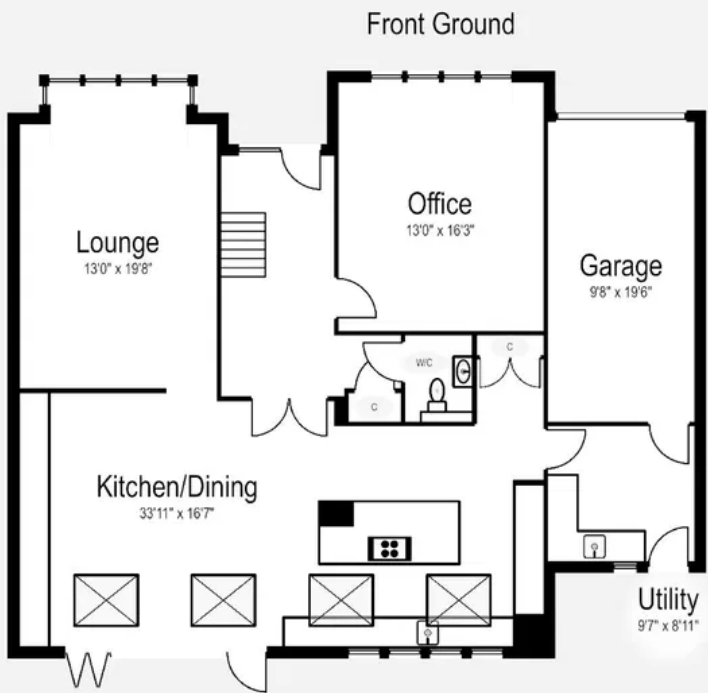
Located in the popular residential location of Northowram with its shops and bars and only a short drive to the M62 network which provides an easy commute to the nearby cities of Leeds and Manchester. This property is neutrally decorated and is ready-to-move-into. The true size and specification of this property can only be appreciated by internal viewing - book yours today!

Property Reference - CR1528









HX3 7FW
Internal - 3396ft²

This floor plan has been created for illustrative purposes only.
Measurements/dimensions are approximate and layout should only be used for guidance.
Not all storage spaces will be displayed. Internal area is an estimation.



CLAIRE
RAMSBOTTOM
exp

Your local personal
estate agent



Claire Ramsbottom

claire.ramsbottom@exp.uk.com

<https://claireramsbottom.exp.uk.com>