



South Lambeth Road, SW8

£2,300 Per calendar month

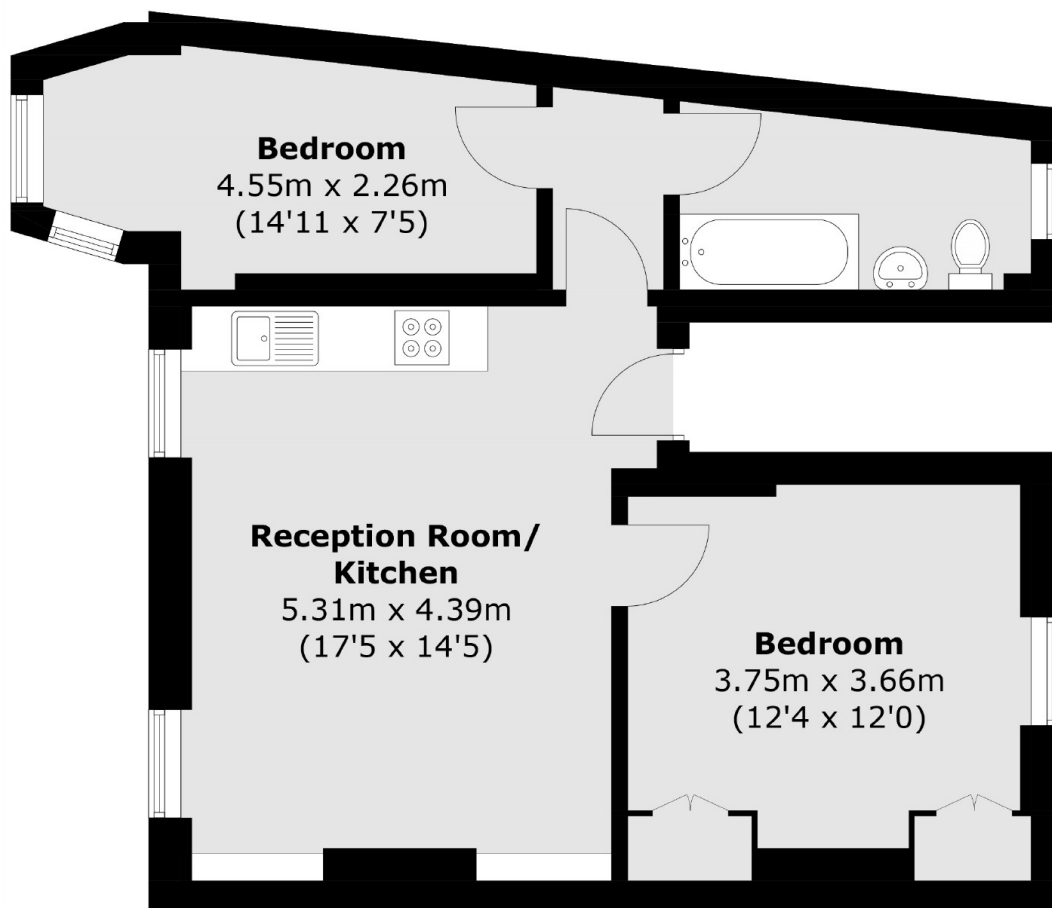
This top floor Victorian conversion, with two double bedrooms, an open plan reception room with kitchen, bathroom, wooden flooring and neutral interior throughout. Ideal for professional sharers.

South Lambeth Road not only has fantastic transport links but with Clapham High Street and Stockwell on your doorstep, you'll never be short of things to do.

Features

- Two Double Bedrooms
- Open Plan Reception
- Generous Storage
- Prime Location
- Top Floor Flat
- Neutral Interior

South Lambeth Road, London, SW8



Total area (approx.): 52.8 sq. m (568.3 sq. ft)