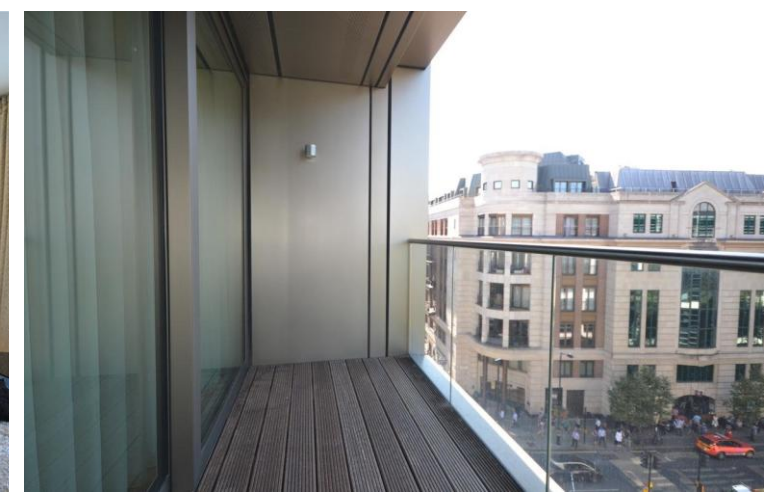




The Courthouse
70 Horseferry Road, SW1P

Asking Price £880,000

CHESTERTONS





The Courthouse is an impressive contemporary development set on the historic site of the former Westminster Magistrates' Court.

One bedroom apartment on the 6th floor in this beautiful development benefiting from an open plan reception to a modern kitchen, double bedroom, modern bathroom, balcony.

Additional benefits include private parking, comfort cooling, central heating, concierge service, access to a residents' fitness suite, tranquil landscaped courtyard garden.

Excellent transport connections are close by, with Pimlico Underground Station (Victoria line) approximately 0.5 miles away, St James's Park Underground Station (Circle and District lines) also around 0.5 miles away, and Westminster Underground Station (Circle, District, and Jubilee lines) just 0.6 miles from the property.

- Located within The Courthouse, an impressive contemporary development
- Spacious one-bedroom apartment situated on the 6th floor.
- Bright open-plan reception room with a modern fitted kitchen.
- Generous double bedroom, contemporary bathroom, and a private balcony.
- Benefits include private parking, comfort cooling, central heating, 24-hour concierge service, access to a residents' fitness suite
- Excellent transport links, with Pimlico Station (Victoria line) and St James's Park Station

Score	Energy rating	Current	Potential
92+	A		
81-91	B	81 B	81 B
69-80	C		
55-68	D		
39-54	E		
21-38	F		
1-20	G		

Tenure: Leasehold 986 years 6 months
Service Charge: £7,500 Reviewed Annually
Ground Rent: £1,200 Per Annum
Local Authority: Westminster
Council Tax Band: E

Chestertons Westminster & Pimlico Sales

105 Wilton Road
 London
 SW1V 1DZ
 westminster@chestertons.co.uk
 020 3040 8201
 chestertons.co.uk



SIXTH FLOOR

APPROX. GROSS INTERNAL FLOOR AREA 577 sq. ft / 53.65 sq. m

Floorplan is for illustrative purposes only and is not to scale. Every attempt has been made to ensure the accuracy of the floorplan shown, however all measurements, fixtures, fittings and data shown are an approximate interpretation for illustrative purposes only. Liability for errors, omissions or mis-statement through negligence or otherwise is hereby excluded.



Chesterton UK Services Limited trading as Chestertons for themselves and for the vendor of this property whose agents they are, give notice that (i) these particulars do not constitute any part of an offer or contract, (ii) all statements contained within these particulars are made without responsibility on the part of Chestertons or the vendor, (iii) whilst made in good faith, none of the statements contained within these particulars are to be relied upon as a statement or representation of fact, (iv) any intending purchasers must satisfy themselves by inspection or otherwise as to the correctness of each of the statements contained within these particulars, (v) the vendor does not make or give either Chestertons or any person in their employment any authority to make or give representation or warranty whatsoever in relation to this property. Wide angle lenses may be used. ©Copyright Chestertons | Chesterton UK Services Limited | Registered Office 5th Floor, The Lantern, 75 Hampstead Road, London, NW1 2PL Registered Company Number 05334580.



This paper is 100% recyclable