



jordan fishwick

Peeveril Gardens Newtown Disley Disley



Peveril Gardens Newtown Disley Disley Stockport SK12 2RG

£159,950



The Property

Tucked away at the head of a cul-de-sac on a popular, small modern development, a well appointed two bedroom first floor apartment. Boasting fabulous views to the front, off road parking with Artificial Lawn Area and larger communal gardens. Convenient position for Newtown Railways Station and comprising: ground floor entrance hall, first floor landing, living room, shaker style kitchen, two bedrooms and re-fitted white bathroom suite with Jacuzzi bath. Double glazing and gas central heating with combination boiler. Ideal First Time Buyer Property.



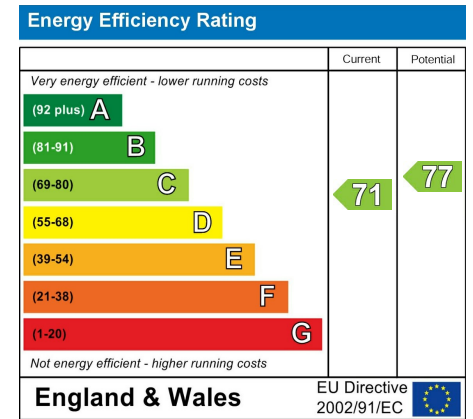
- Popular Small Modern Development
- Convenient For Amenities
- First Floor Flat
- Two Bedrooms
- Double Glazing and Gas Central Heating
- Larger Communal Grounds
- Artificial Lawn Garden and Drive
- Fine Views
- Perfect for The First Time Buyer

Postcode SK12 2RG

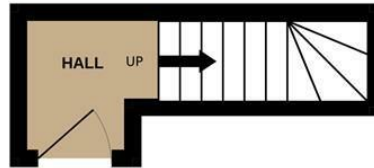
EPC Rating C

Local Authority Cheshire East

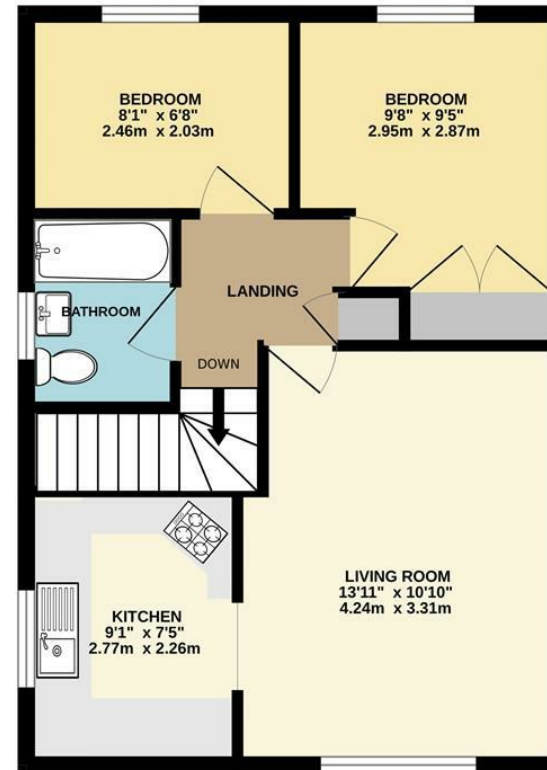
Council Tax A



GROUND FLOOR



1ST FLOOR



Whilst every attempt has been made to ensure the accuracy of the floorplan contained here, measurements of doors, windows, rooms and any other items are approximate and no responsibility is taken for any error, omission or mis-statement. This plan is for illustrative purposes only and should be used as such by any prospective purchaser. The services, systems and appliances shown have not been tested and no guarantee as to their operability or efficiency can be given.
Made with Metropix ©2026



These particulars are believed to be accurate but they are not guaranteed and do not form a contract. Neither Jordan Fishwick nor the vendor or lessor accept any responsibility in respect of these particulars, which are not intended to be statements or representations of fact and any intending purchaser or lessee must satisfy himself by inspection or otherwise as to the correctness of each of the statements contained in these particulars. Any floorplans on this brochure are for illustrative purposes only and are not necessarily to scale.

Offices at: Chorlton, Didsbury, Disley, Hale, Glossop, Macclesfield, Manchester Deansgate, Manchester Whitworth Street, New Mills, Sale, Wilmslow and Withington

14 Market St, Disley, Cheshire, Stockport SK12 2AA

01663 767878

disley@jordanfishwick.co.uk

www.jordanfishwick.co.uk